



NHTSA

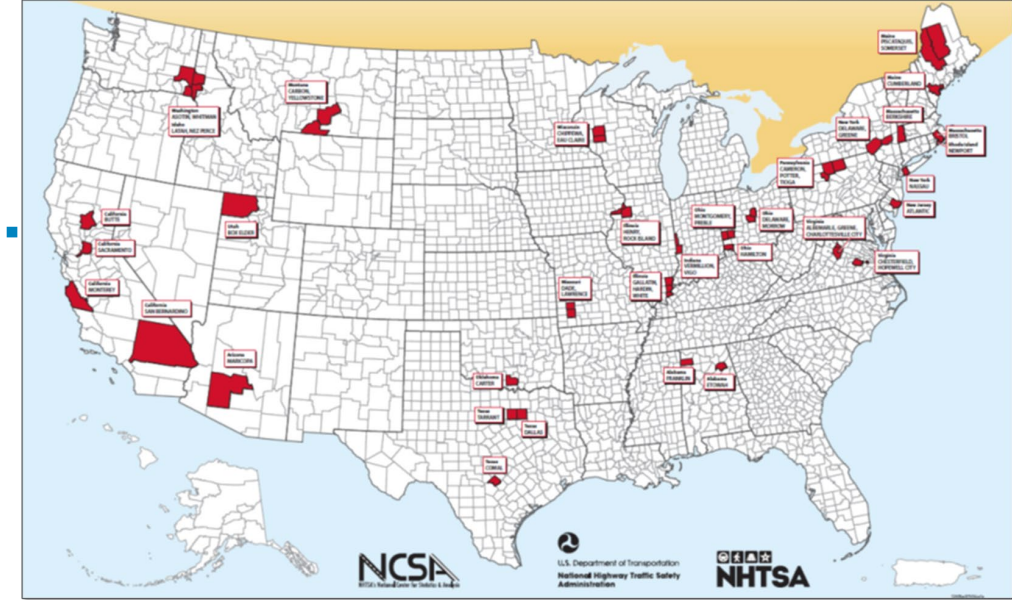
NATIONAL HIGHWAY TRAFFIC SAFETY ADMINISTRATION

Updates on NHTSA's Crash Investigation Data Collection Activities

John Brophy
January 2025

Background

- The Crash Investigation Sampling System (CISS) began data collection in 2016
 - NASS-CDS replacement (1979-2015)
- From 2018-2023, CISS included 32 nationally-representative sites (PSUs) across the country
- CISS was a sample of police-reported motor vehicle crashes where at least one passenger vehicle is towed from the crash scene 2016-2023
 - Beginning 2024, changes to scope and more sites



Background

- CISS is an investigation-based program where data is collected from:
 - Vehicle inspections (crash, occupant contacts, EDR if applicable, etc.)
 - Scene inspections (including scaled diagrams)
 - Occupants (including medical records)
- Since 2016 CISS has published 21,615 cases
- NHTSA has over 31,000 EDR files from crashes



2023 CISS Data Released in December

- In 2023 CISS, 3,997 police-reported crashes were investigated where at least one passenger vehicle was towed from the scene
 - This represents an estimated 2.55M police-reported crashes
- In the 3,997 crashes, 7,037 towed vehicles were involved
- The towed vehicles involved 7,833 occupants



What's in the CISS Data

- CrashViewer
 - Coded data, images, CDR reports
 - <https://crashviewer.nhtsa.dot.gov/>
- CISS data files (FTP site)
 - SAS and CSV files
 - <https://www.nhtsa.gov/file-downloads?p=nhtsa/downloads/CISS/>
- NHTSA Crash Stats
 - <https://crashstats.nhtsa.dot.gov/>
- NHTSA Field Crash Investigation Coding and Editing Manual
- CISS Analytical User's Manual
- Overview of Crash Investigation Sampling System
 - Summary of crash, vehicle, and occupant estimates
- Virtual CISS Databook
 - Weighted and unweighted frequencies of all data elements in CISS

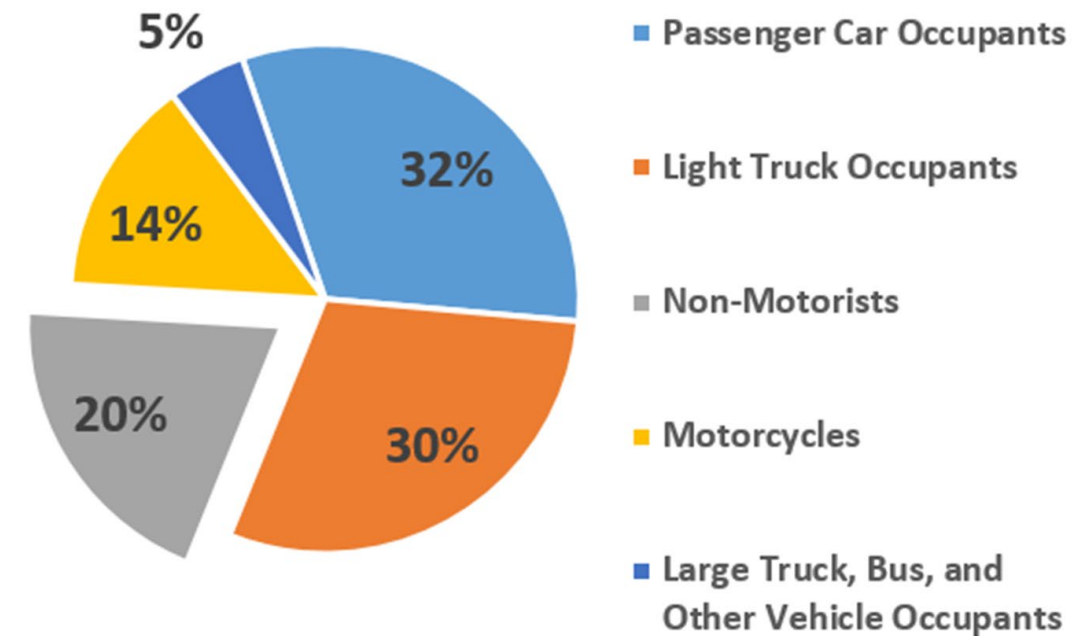
What's in the CISS Data

- 2017-2023
 - Involved a towed light passenger vehicle
- 2024 (40 sites)
 - Involved towed light passenger vehicle, or
 - Nonmotorist received a police-reported K, A, or B injury severity
- 2025 (49 sites)
 - Involved towed light passenger vehicle, or
 - Nonmotorist received a police-reported K, A, or B injury severity, or
 - Motorcycle occupant received police-reported K, A, or B injury severity

CISS Expansion

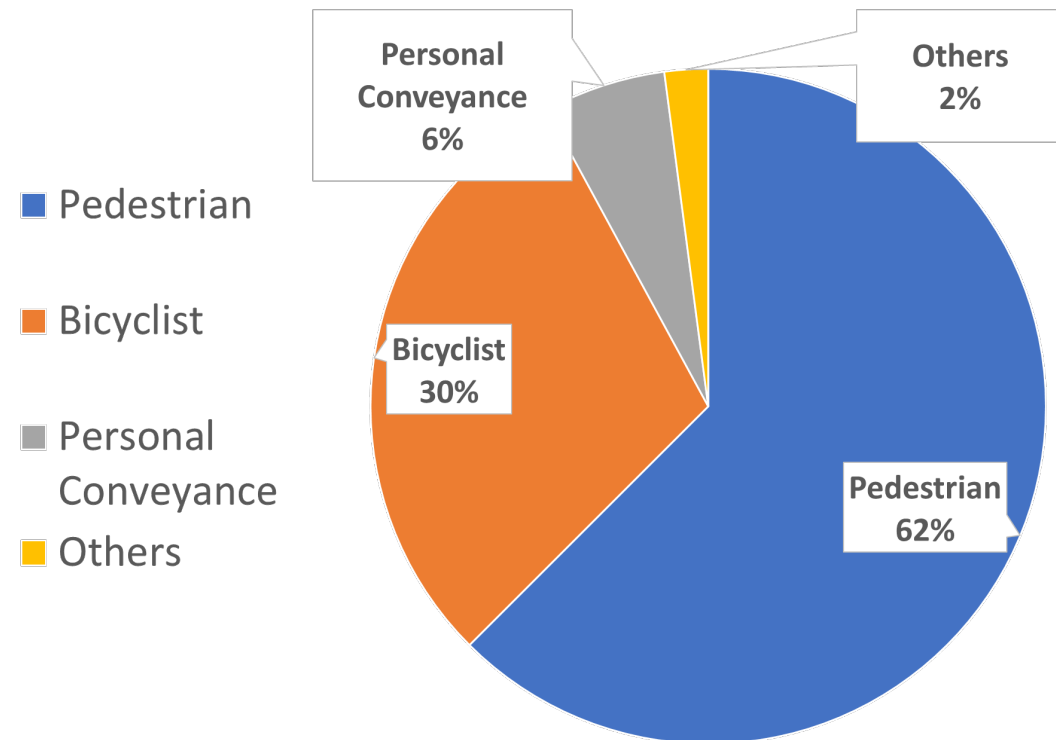
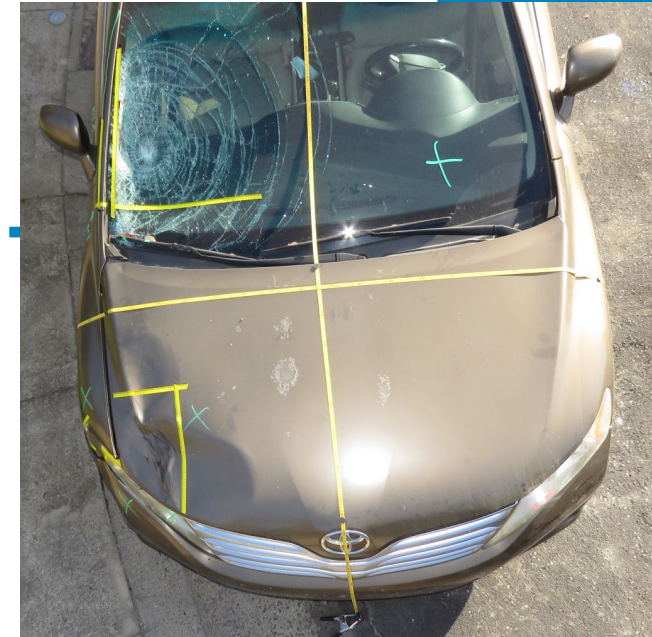
- New Funding
 - Funded the expansion of CISS to capture all crash types
- In addition to CISS expansion, MUST maintain current operations at existing sites while also focusing on:
 - 1) Adding sites
 - 2) Expanding scope that includes all crash types; and
 - 3) On-scene investigation protocols

Traffic Fatalities
Source: 2021 FARS



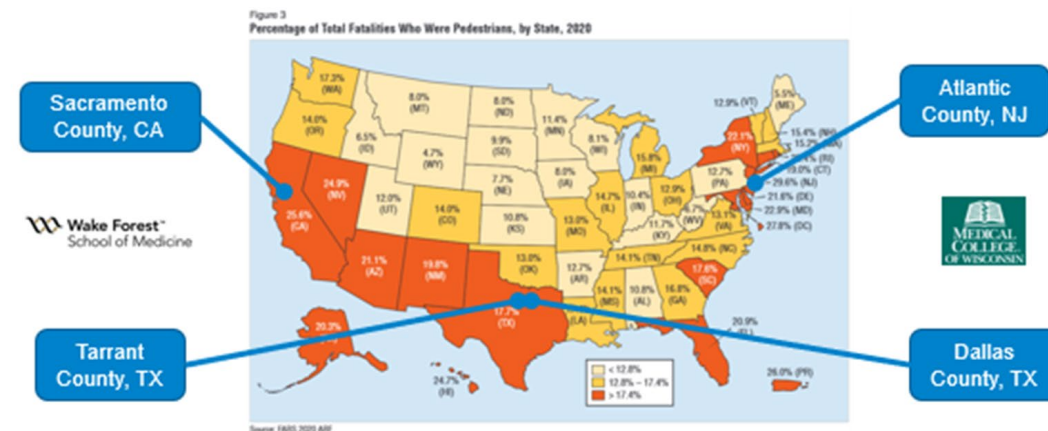
CISS Nonmotorist Data Collection

- Nonmotorist target allocation 7% of total cases
 - Approximately 375 nonmotorist cases in 2024
- Collecting data to support:
 - Crashworthiness
 - Crash Avoidance
 - Infrastructure
 - Human behavior



CISS Nonmotorist Data Collection

- Building on previous NHTSA pedestrian work
- CIREN Pedestrian Pilot
- **V**ulnerable Road User **I**n-depth **C**rash Investigation **S**tudy (**VICIS**)
 - 93 cases collected at 4 CISS sites
 - CIREN Injury and Engineering Centers
 - Wake Forest University, Medical College of Wisconsin
 - Code injuries
 - Perform injury causation analysis
 - Determine kinematic trajectories
 - Review crash avoidance calculations



CISS Nonmotorist Data Collection

- Crashworthiness
 - Contacts, kinematic trajectory, vehicle-nonmotorist interaction, injuries
- Crash Avoidance
 - Speeds, detection distance, reveal time, weather
- Infrastructure
 - Roadway features, pedestrian facilities, streetlighting
- Human Behavior
 - Driver and nonmotorist interviews, distractions, impairment, trip information, risk-taking behavior

CISS Motorcycle Data Collection

- Motorcycle target allocation 6% of total cases in 2025
- Each new crash type requires multiple updates to the system
- Variable development and data collection procedures
 - Leaning heavily on previous studies
 - Pre-study data collection
 - Additional training for investigators
- Modifications by NCSA Math Analysis
- IT updates



Update on Special Crash Investigations

- Special Crash Investigations targets ~80-100 cases per year
- Agency interest (vehicles reported in automated mode at time of crash, air bag anomalies, E-bike crashes, electric vehicle fires, Move Over Law crashes, etc.)
- Since 2022 have been seeking frontover crashes:
 - Vehicles starting from a stop
 - Nonmotorist struck by front plane
 - Typically, less than 5 mph



Questions?



Thank You

John.Brophy@dot.gov

