



AMERICAN SUZUKI MOTOR CORPORATION

01-022-N11B-10657

EXECUTIVE SECRETARIAT

June 15, 2005

4/pps

2005 JUN 24 P 3: 21 N6477MK6.VIN.doc

NATIONAL HIGHWAY
TRAFFIC SAFETY ADM.

Administrator
National Highway Traffic Safety Administration
400 Seventh Street, S.W.
Washington DC 20590

Attn: VIN Coordinator
Re: Part 565 Update for Motorcycles

Pursuant to the requirements of Part 565 we are updating the VIN encoding for Suzuki motorcycle products imported into the USA and its territories. Attached is a copy of Suzuki's VIN encoding for model year 2006. The first section describes the encoding used by Suzuki. The second section of the attachments describes VINs that used for Suzuki street motorcycles. Suzuki imports motorcycles that are manufactured in Japan and Spain.

Also included as part of this submission are the VIN encoding for all other Suzuki motorcycle and All-Terrain Vehicle (ATV) products (off-road motorcycles and competition motorcycles) that are marketed in the U.S. and Canada for 2006 model year. All Suzuki off road motorcycle and ATV products share a 17-digit VIN patterned after the requirements in Part 565.

As a follow up to conversations with NHTSA, beginning with the 2003 model year Suzuki and Kawasaki entered into a production alliance. Both companies produce some products for the other; mostly off-road motorcycles and ATVs. The alliance products are duly described in the attached 2006 encoding with unique WMI codes.

We trust this meets with your approval. Should you have any questions regarding Suzuki VINs, please contact this office.

Sincerely,

Jeffrey L. Link
Certification Manager
Government Relations Department

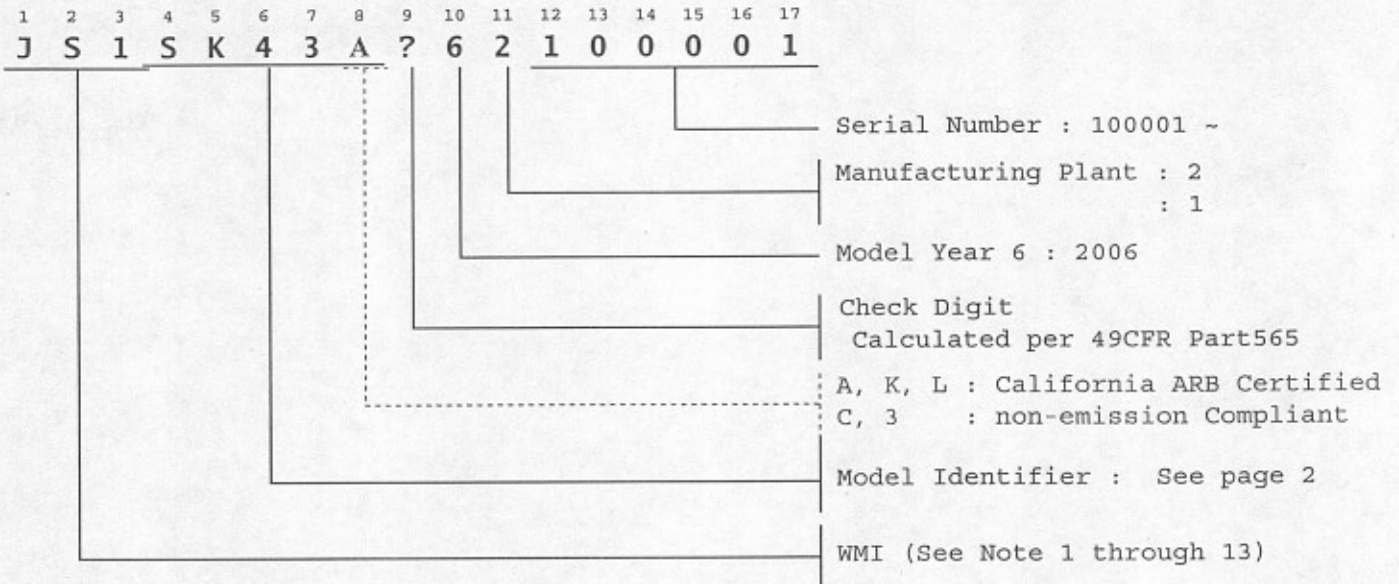
Attachment.
jL

H:\CERTMC2006\VIN\N6477MK6.VIN.doc

Vehicle Identification Number Coding System for
2006 Model Year SUZUKI Motorcycles and All Terrain Vehicles

SUZUKI VIN system is constructed in accordance with Part 565 - Vehicle Identification Number Requirements, Title 49 Code of Federal Regulations, and consists of 17 characters of arabic numbers and roman letters.

Each decipherable content of characters and SUZUKI's own information are described as follows.



- Note : 1. JS1: Make code for SUZUKI (Suzuki, Japan production)
Motorcycle for sale in U.S. and Canada
2. JSA: Make code for SUZUKI (Suzuki, Japan production)
ATV for sale in U.S. and Canada
3. LM1: Make code for SUZUKI (Suzuki , Taiwan production)
Motorcycle for sale in U.S. and Canada
4. LM4: Make code for SUZUKI (Suzuki , Taiwan production)
ATV for sale in U.S. and Canada
5. KM4: Make code for SUZUKI (Suzuki , Korea production)
ATV for sale in U.S. and Canada
6. VTT: Make code for SUZUKI (Suzuki , Spain production)
Motorcycle for sale in U.S. and Canada
7. 5SA: Make code for SUZUKI (Suzuki , USA production)
Other than motorcycle for sale in U.S. and Canada
8. JKS: Make code for SUZUKI (Kawasaki-Japan production)
Motorcycle for sale in U.S. and Canada
9. JSK: Make code for Kawasaki (Suzuki - Japan production)
Motorcycle for sale in U.S. and Canada
10. JSL: Make code for Kawasaki (Suzuki, Japan production)
Other than motorcycle for sale in U.S. and Canada
11. RK6: Make code for Kawasaki (Suzuki , Taiwan production)
Motorcycle for sale in U.S. and Canada
12. RK7: Make code for Kawasaki (Suzuki , Taiwan production)
Other than motorcycle for sale in U.S. and Canada
13. JK8 Make code for Suzuki (Kawasaki-USA production)
Suzuki QUV for sale in the U.S. and Canada.

VIN FOR 2006 (K6) MODEL YEAR MOTORCYCLES & ATVs

MODEL NAME	WMI*	MODEL IDENTIFIER	MY & ASS'Y	SEQ. PROD #	ENG. PREFIX	NOTE:
*see WMI note 1						
OFF-ROAD						
JR50	LM1	JA143	61	100001	A102	
KDX050A6	RK6	JA14C	61	100001	A102	for Kawasaki
JR80	LM1	DC143	61	100001	C106	
DR-Z125	JS1	DF43A	62	100001	F445	
DR-Z125L	JS1	DF43B	62	100001	F445	
KLX125A6	JSK	DF43D	62	100001	F445	for Kawasaki
KLX125B6	JS1	DF43E	62	100001	F445	for Kawasaki
DR-Z250	JS1	DJ43A	62	100001	J428	
DR-Z400E	JS1	DK433	62	100001	K417	
DR-Z400E	JS1	DK44A	62	100001	K419	
DR-Z110 (LX110B)	JKS	LXEB1	6D	100001	LX110BE	by Kawasaki
COMPETITION						
RM85	LM1	RD16C	61	100001	D107	
RM85L	LM1	RD17C	61	100001	D107	
RM125	JS1	RF16C	62	100001	F134	
RM250/Z	JS1	RJ18C	62	100001	J119	
RM-Z450	JS1	RL41C	62	100001	L401	
RM65 (KX065B)	JKS	KXGBC	6A	100001	KX065AE	by Kawasaki
RM-Z250 (KX250P)	JKS	KXCPC	6A	100001	KX250NE	by Kawasaki
ATV						
LT-Z50	LM4	AZ413	61	100001	Z402	
KSF050A6	RK7	AA12C	61	100001	A110	for Kawasaki
LT80	LM4	AC113	61	100001	C113	
KSF080A6	RK7	AC11C	61	100001	C113	for Kawasaki
LT-F160	KM4	AG43A	61	100001	G402	
LT-F250	JSA	AJ51A	62	100001	J434	
LT-Z250	JSA	AJ4AA	62	100001	J437	
LT-F400F	5SA	AK46A	67	100001	K423	
LT-A400F	5SA	AK46K	67	100001	K421	
LT-Z400	JSA	AK47A	62	100001	K428	
KSF400A6	JSL	AK47B	62	100001	K428	for Kawasaki
LT-R450	JSA	AL41A	62	100001	L402	
LT-F500F	5SA	AM44A	67	100001	M411	
LT-A500F	5SA	AM43A	67	100001	M409	
LT-A700X	5SA	AP41A	67	100001	P413	

VIN FOR 2006 (K6) MODEL YEAR MOTORCYCLES & ATVs

MODEL NAME	WMI*	MODEL IDENTIFIER	MY & ASS'Y	SEQ. PROD #	ENG. PREFIX	NOTE:
*see WMI note 1						
ON-ROAD						
DR200SE	JS1	SH42A	62	100001	H402	
GZ250	VTT	NJ48A	62	100001	J430	
AN400 / AN400S	JS1	CK43A	62	100001	K429	
DR-Z400S	JS1	SK43A	62	100001	K419	
DR-Z400SM	JS1	SK44A	62	100001	K419	
GS500 / GS500F	VTT	GM51A	62	100001	M504	
GSX600F	JS1	GN79A	62	100001	N717	
GSX-R600	JS1	GN7CA	62	100001	N727	2005
GSF650S	JS1	GP73A	62	100001	P706	Canada ONLY
GSF650SA	JS1	GP73B	62	100001	P706	ABS, Canada ONLY
DR650SE	JS1	SP46A	62	100001	P409	
SV650 / SV650S	JS1	VP53A	62	100001	P507	
AN650	JS1	CP51A	62	100001	P506	
AN650A	JS1	CP51B	62	100001	P506	
LS650	JS1	NP41A	62	100001	P401	
DL650	JS1	VP54A	62	100001	P509	
GSX750F	JS1	GR7GA	62	100001	R736	
GSX-R750	JS1	GR7JA	62	100001	R741	2005
VS800	JS1	VS52A	62	100001	S503	
VZ800	JS1	VS56A	62	100001	S510	
VL800 / VL800T / VL800C	JS1	VS55A	62	100001	S510	
DL1000	JS1	VT53A	62	100001	T507	
SV1000 / SV1000S	JS1	VT54A	62	100001	T511	
GSX-R1000	JS1	GT76A	62	100001	T713	
GSF1200S	JS1	GV79A	62	100001	V720	
GSX1300R	JS1	GW71A	62	100001	W701	
VS1400	JS1	VX51L	62	100001	X501	
VL1500 / VL1500T	JS1	VY52A	62	100001	Y504	
VZR1800	JS1	VY53A	62	100001	Y505	