

TOYOTA
TOYOTA MOTOR NORTH AMERICA, INC.

WASHINGTON OFFICE
1850 M STREET, NW, SUITE 600, WASHINGTON, DC 20036

TEL: (202) 775-1700
FAX: (202) 463-8513

August 17, 2005

01-022-N11B-10724

14 pgs.

Dr. Jeffrey Runge
Administrator
National Highway Traffic Safety Administration
400 Seventh Street
Washington, DC 20590

Attention: VIN Coordinator

RE: VIN Coding System for 2006 Toyota and Lexus Vehicles

Dear Dr. Runge:

On May 25, 2005, pursuant to 49 CFR Part 565, "Vehicle Identification Number Content Requirements", on behalf of Toyota Motor Corporation, we submitted information on the Vehicle Identification Number Coding System applicable to certain 2006 model year Toyota and Lexus vehicles.

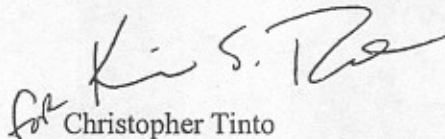
We are now submitting a Supplement to that submission. This Supplement includes information on additional 2006 Toyota and Lexus models. Please replace the previous submission with this Supplement.

We are also submitting VIN Coding System information for 2006 Toyota Tacoma which is manufactured by Toyota Motor Manufacturing de Baja California.

Thank you for your cooperation.

Sincerely,

TOYOTA MOTOR NORTH AMERICA, INC.


Christopher Tinto
Vice President

CT:cc
Enclosures

TOYOTA & LEXUS VEHICLE IDENTIFICATION NUMBER CODING SYSTEM

APPLICABLE TO 2006 MODELS

[Manufactured by TOYOTA]

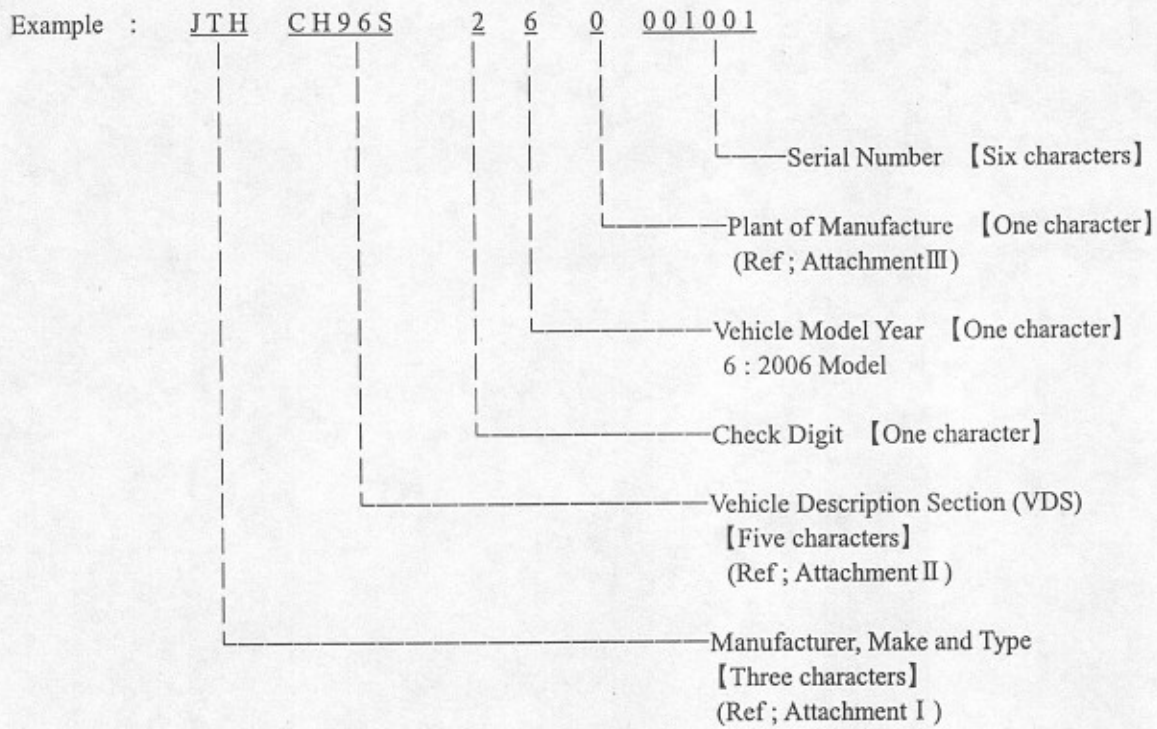
Supplement to
"TOYOTA & LEXUS Vehicle Identification Number Coding System
Applicable to 2006 Models"
(Dated December 2004)

TOYOTA SCION xA
TOYOTA SCION tC
TOYOTA SCION xB
TOYOTA LAND CRUISER
TOYOTA HIGHLANDER Hybrid
TOYOTA COROLLA
LEXUS SC430
LEXUS IS 250
LEXUS IS 350
TOYOTA PRIUS

LEXUS GS300
LEXUS GS430
LEXUS LX470
LEXUS RX400h
LEXUS LS430
LEXUS RX330
LEXUS GX470
TOYOTA HIGHLANDER
TOYOTA 4RUNNER
TOYOTA RAV4
TOYOTA TACOMA

June 2005

TOYOTA & LEXUS 'VIN' CODING SYSTEM



TOYOTA & LEXUS 2006 MODEL
MANUFACTURER , MAKE AND TYPE CODE

Code	Manufacturer	Make	Type
JTH	Toyota	Lexus	Passenger Car
#1 JTK	Toyota	Toyota	Passenger Car
#1 JTE	Toyota	Toyota	Multipurpose Passenger Vehicle
#1 JTL	Toyota	Toyota	Multipurpose Passenger Vehicle
#1 JTJ	Toyota	Lexus	Multipurpose Passenger Vehicle
#4 JTD	Toyota	Toyota	Passenger Car
#6 JTM	Toyota	Toyota	Multipurpose Passenger Vehicle

#1 added 01/02/05

#4 added 01/06/05

#6 added 29/06/05

TOYOTA & LEXUS 2006 MODEL VDS CODE

I Passenger Car

Character of the VDS

Car Line Name	1st Digit		2nd Digit		3rd Digit		4th Digit		5th Digit	
		Body Type		Engine Type		Series		Restraint System Type		Line
GS300 GS430	B C	4Door Sedan Two-Wheel Drive 4Door Sedan Four-Wheel Drive	N H	3UZ-FE 3GR-FSE	9 9 9	UZS190L GRS190L GRS195L	6	Driver & Passenger Seats: Manual Belt With Air Bag and Knee Air Bag and Side Air Bag and Curtain Shield Air Bag	S S	GS300 GS430
SCION xA #1	K	5Door Sedan Two-Wheel Drive	T	1NZ-FE	6	NCP61L	0 2	Driver & Passenger Seats: Manual Belt With Air Bag and Side Air Bag and Curtain Shield Air Bag (Front & Rear Seats) Driver & Passenger Seats: Manual Belt With Air Bag	4	SCION xA
SCION tC #1	D	3Door Coupe Two-Wheel Drive	E	2AZ-FE	1	ANT10L	6 7	Driver & Passenger Seats: Manual Belt With Air Bag and Side Air Bag and Curtain Shield Air Bag and Knee Air Bag (Driver Seat only) Driver & Passenger Seats: Manual Belt With Air Bag and Knee Air Bag (Driver Seat only)	7	SCION tC
LS430 #3	B	4Door Sedan Two-Wheel Drive	N	3UZ-FE	3	UCF30L	6	Driver & Passenger Seats: Manual Belt With Air Bag and Knee Air Bag and Side Air Bag and Curtain Shield Air Bag	F	LS430

#1 added 01/02/05

#3 added 19/04/05

TOYOTA & LEXUS 2006 MODEL VDS CODEI Passenger CarCharacter of the VDS

Car Line Name	1st Digit		2nd Digit		3rd Digit		4th Digit		5th Digit	
		Body Type		Engine Type		Series		Restraint System Type		Line
COROLLA #4	B	4Door Sedan Two - Wheel Drive	R	1ZZ-FE	3	ZZE130L	2	Driver & Passenger Seats: Manual Belt With Air Bag	E	COROLLA
SC430 #4	F	2Door Convertible Two - Wheel Drive	N	3UZ-FE	4	UZZ40L	8	Driver & Passenger Seats: Manual Belt With Air Bag and Side Air Bag	Y	SC430
IS250 IS350 #4	B C	4Door Sedan Two - Wheel Drive 4Door Sedan Four - Wheel Drive	K E	4GR-FSE 2GR-FSE	2 2 2	GSE20L GSE25L GSE21L	6	Driver & Passenger Seats: Manual Belt With Air Bag and Knee Air Bag and Side Air Bag and Curtain Shield Air Bag	2	IS250 IS350
PRIUS #6	K	4Door Hatch back Two-Wheel Drive	B	1NZ-FXE+3CM	2	NHW20L	0 2	Driver & Passenger Seats: Manual Belt With Air Bag and Side Air Bag and Curtain Shield Air Bag Drive & Passenger Seats: Manual Belt With Air Bag	U	PRIUS

#4 added 01/06/05
#6 added 29/06/05

TOYOTA & LEXUS 2006 MODEL VDS CODE

II Multipurpose Passenger Vehicle

Character of the VDS

Car Line Name	1st Digit		2nd Digit		3rd Digit		4th Digit		5th Digit	
		Body Type		Engine Type		Series	Grade		Line	
SCION xB	K	5Door Wagon Two-Wheel Drive	T	1NZ-FE	3	NCP31L	2 3	— —	4	SCION xB
	#1	Gross Vehicle Weight Rating(from 1st to 5th Digits) KT324 --- 3370 lb (Class B) KT334 --- 3315 lb (Class B)								
LAND CRUISER	H	4Door Wagon Four-Wheel Drive	T	2UZ-FE	0	UZJ100L	5	VX	J	LAND CRUISER
	#1	Gross Vehicle Weight Rating(from 1st to 5th Digits) HT05J --- 6925lb (Class E)								
LX470	H	4Door Wagon Four-Wheel Drive	T	2UZ-FE	0	UZJ100L	0	—	W	LX470
	#1	Gross Vehicle Weight Rating(from 1st to 5th Digits) HT00W --- 6925lb (Class E)								
HIGHLANDER Hybrid HIGHLANDER 4WD- Hybrid	G	5Door Wagon Two-Wheel Drive (5 Passenger)	W	3MZ-FE + 1JM, 2FM	2	MHU23L	1	STD	A	HIGHLANDER
	D	5Door Wagon Two-Wheel Drive (7 Passenger)			2	MHU28L				
	H	5Door Wagon Four-Wheel Drive (5 Passenger)								
	E	5Door Wagon Four-Wheel Drive (7 Passenger)								
	#5	Gross Vehicle Weight Rating (from 1st to 5th Digits) GW21A --- 5710lb (Class D) DW21A ---5710 lb (Class D) HW21A --- 5710lb (Class D) EW21A --- 5710lb (Class D)								
RX400h 2WD RX400h AWD	G	5Door Wagon Two-Wheel Drive	W	3MZ-FE + 1JM,2FM	3	MHU33L	1	STD	U	RX330
	H	5Door Wagon Four-Wheel Drive			3	MHU38L				
#5	GVWR(from 1st to 5th Digits) GW31U --- 5560lb (Class D) HW31U ---5560lb (Class D)									
GX470	B	5Door Wagon Four - Wheel Drive	T	2UZ-FE	2	UZJ120L	0	-	X	GX470
	#4	Gross Vehicle Weight Rating (from 1st to 5th Digits) BT20X --- 6200lb (Class E)								

#4 added 01/06/05
#5 revised 01/06/05

TOYOTA & LEXUS 2006 MODEL VDS CODE

II Multipurpose Passenger Vehicle

Character of the VDS

4RUNNER 2WD 4RUNNER 4WD	Z	5Door Wagon Two - Wheel Drive	U	1GR-FE	1	GRN210L	4	SR5 Limited	R	4RUNNER
	B	5Door Wagon Four - Wheel Drive	T	2UZ-FE	1	GRN215L UZN210L UZN215L	7			
#4	Gross Vehicle Weight Rating (from 1st to 5th Digits) ZU14R --- 5330lb (Class D) ZU17R --- 5330lb (Class D) BU14R --- 5580lb (Class D) BU17R --- 5580lb (Class D) ZT14R --- 5490lb (Class D) ZT17R --- 5490lb (Class D) BT14R --- 6005lb (Class E) BT17R --- 6005lb (Class E)									
RX330	G	5Door Wagon Two - Wheel Drive	A	3MZ-FE	3	MCU33L	1	STD	U	RX330
	H	5Door Wagon Four - Wheel Drive			3	MCU38L				
#4	Gross Vehicle Weight Rating (from 1st to 5th Digits) GA31U --- 5245lb (Class D) HA31U --- 5245lb (Class D)									
HIGHLANDER 2WD HIGHLANDER 4WD	G	5Door Wagon Two - Wheel Drive	P	3MZ-FE	2	MCU23L	1	STD	A	HIGHLANDER
	D	5Door Wagon Two - Wheel Drive (5 Passenger)	D	2AZ-FE	2	MCU28L ACU20L ACU25L				
	H	5Door Wagon Two - Wheel Drive (7 Passenger)								
	E	5Door Wagon Four - Wheel Drive (5 Passenger)								
		5Door Wagon Four - Wheel Drive (7 Passenger)								
#4	Gross Vehicle Weight Rating (from 1st to 5th Digits) GP21A --- 5360lb (Class D) DP21A --- 5360lb (Class D) HP21A --- 5360lb (Class D) EP21A --- 5360lb (Class D) GD21A --- 5360lb (Class D) DD21A --- 5360lb (Class D) HD21A --- 5360lb (Class D) ED21A --- 5360lb (Class D)									
RAV4 2WD RAV4 4WD	B	5Door Wagon Four - Wheel Drive	D	2AZ-FE	3	ACA33L	1	High (without Third seat)	V	RAV4
	Z	5Door Wagon Two - Wheel Drive	K	2GR-FE	3	ACA38L GSA33L GSA38L	4 2 3 5			
#6	Gross Vehicle Weight Rating (from 1st to 5th Digits) BD31V, BD32V, BD33V --- 4535lb (Class C) / BD34V, BD35V --- 4865lb (Class C) ZD31V, ZD32V, ZD33V --- 4430lb (Class C) / ZD34V, ZD35V --- 4730lb (Class C) BK31V, BK32V, BK33V --- 4720lb (Class C) / BK34V, BK35V --- 5015lb (Class D) ZK31V, ZK32V, ZK33V --- 4600lb (Class C) / ZK34V, ZK35V --- 4895lb (Class C)									

#4 added 01/06/05

#6 added 29/06/05

TOYOTA & LEXUS 2006 MODEL MANUFACTURING PLANT CODE

Car Line Name	Applicable VDS	Code (11th Digit)	Plant of Manufacture
GS300 GS430	B*96S	5	Tahara Plant, Toyota Motor Corp.
	CH96S	0 - 9	Tahara Plant, Toyota Motor Corp.
SCION xA #1	KT6*4	0 - 9	Takaoka Plant, Toyota Motor Corp.
SCION tC #1	DE1*7	0 - 9	Tsutsumi Plant, Toyota Motor Corp.
SCION xB #1	KT3*4	4 - 9	Sagamihara Plant, Central Motor Corp., LTD.
LAND CRUISER #1	HT05J	2 - 3	Honsya Plant, Toyota Motor Corp.
LX470 #2	HT00W	3 - 4	Honsya Plant, Toyota Motor Corp.
HIGHLANDER Hybrid HIGHLANDER 4WD-i Hybrid #2	*W21A	0 - 9	Toyota Motor Kyushu, Inc.
RX400h 2WD RX400h 4WD #2	*W31U	0 - 9	Toyota Motor Kyushu, Inc.
LS430 #3	BN36F	5	Tahara Plant, Toyota Motor Corp.
GX470 #4	BT20X	0 - 9	Tahara Plant, Toyota Motor Corp.
COROLLA #4	BR32E	0 - 1	Takaoka Plant, Toyota Motor Corp.
		2 - 9	Nagakusa Plant, Toyota Industries Corp.
HIGHLANDER 2WD HIGHLANDER 4WD #4	**21A	0 - 9	Toyota Motor Kyusyu, Inc.
4RUNNER 2WD 4RUNNER 4WD #4	**1*R	0 - 7	Tahara Plant, Toyota Motor Corp.
		8 - 9	Hamura Plant, Hino Motors, LTD.
SC430 #4	FN48Y	1	Higashifuji Plant, Kanto Auto Works, LTD.
RX330 #4	**31U	0 - 9	Toyota Motor Kyusyu, Inc.
IS 250 IS 350 #4	**262	5	Tahara Plant, Toyota Motor Corp.
		2	Toyota Motor Kyusyu, Inc.

※ continue ※

Attachment III

TOYOTA & LEXUS 2006 MODEL MANUFACTURING PLANT CODE

Car Line Name	Applicable VDS	Code(11th Digit)	Plant of Manufacture
PRIUS #6	KB2*U	3	Tsutsumi Plant, Toyota Motor Corp.
		7	Toyota Auto Body Corp., LTD
RAV4 2WD RAV4 4WD #6	**3*V	0 - 5	Tahara Plant, Toyota Motor Corp.
		6 - 9	Nagakusa Plant, Toyota Industries Corp.

Note : Each asterisk indicates one space where a character, which is determined according to the VDS code as shown in Attachment II , will be added.

#1 added 01/02/05
#2 added 17/03/05
#3 added 19/04/05
#4 added 01/06/05
#6 added 29/06/05

TOYOTA TACOMA VEHICLE IDENTIFICATION NUMBER CODING SYSTEM

APPLICABLE TO 2005 MODEL

[Manufactured by TMMBC]

June 2005

TOYOTA TACOMA "Vehicle Identification Number" Coding System
(2006 Model)

Example

	Section 1			Section 2					Check Digit	Section 3							
Digit	1	2	3	4	5	6	7	8	9	10	11	12	13	14	15	16	17
Example	3	T	M	J	U	6	2	N	2	6	M	0	0	1	0	0	1

Section 1 : Manufacturer, Make and Type

Digits	Code	Manufacturer	Make	Type
	3TM	Toyota Motor Mfg de Baja California S de RL de CV	Toyota	Truck

Section 2 : Vehicle Description Section (VDS)

		Code	Description
4th Digit	Cab, Chassis Drive Train & Brake System Type	J	Double Cab , Long Wheelbase, Two-Wheel Drive
		K	Double Cab , Super Long Wheelbase, Two-Wheel Drive
		L	Double Cab , Long Wheelbase, Four-Wheel Drive
		M	Double Cab , Super Long Wheelbase, Four-Wheel Drive
		T	Access Cab, Long Wheelbase Two-Wheel Drive
		U	Access Cab, Long Wheelbase Four-Wheel Drive
5th Digit	Engine Type	U	1GR-FE
6th Digit	Series	4	GRN245L
		5	GRN250L
		6	GRN265L
		7	GRN270L
7th Digit	Grade	2	DLX
8th Digit	Line	N	TACOMA

Gross Vehicle Weight Rating (4th, 5th, 6th, 7th & 8th Digits)

KU72N	5350	lb (Class D)	MU52N	5450	lb (Class D)
LU42N	5450	lb (Class D)	JU62N	5350	lb (Class D)
TU62N	5250	lb (Class D)	UU42N	5350	lb (Class D)

Section 3 : Vehicle Model Year, Plant of Manufacture and Serial Number

		Code	Description
10th Digit	Vehicle Model Year	6	2006 Model
11th Digit	Plant of Manufacture	M	Baja California
12th-17th Digits	Serial Number	001001 Thru 999999	TACOMA