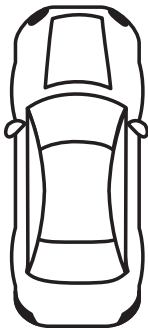
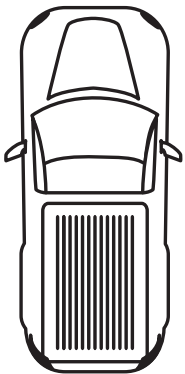
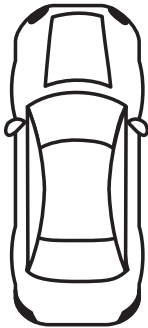
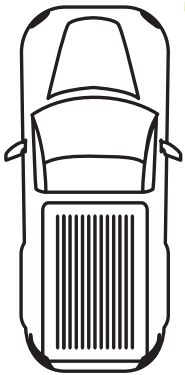
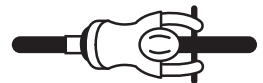
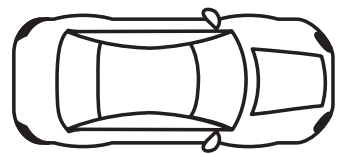
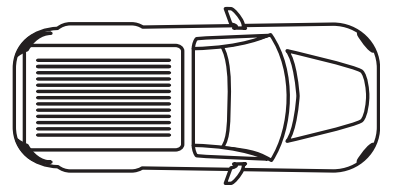
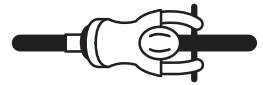
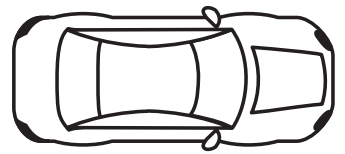
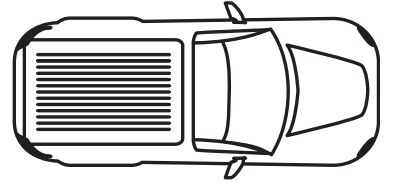


# RIGHT-OF-WAY

## Props

**Directions:** Participants are likely to have questions on right-of-way based on situations they have observed. By cutting out the props below, use the sample intersection to present the scenario and determine who has the right-of-way. Alternatively, an intersection can be made with masking tape on the floor and students who are assigned the roles of motorist, bicyclist, or pedestrian, can role-play the scenario.



# RIGHT-OF-WAY

Sample  
Intersection

