

# Hand Signals

So far, you may have only been a passenger or pedestrian, but it is important to let other drivers know if you are stopping or turning. Now that you are driving your first vehicle (your bicycle), it's time to learn some of the rules of the road for communicating with other road users. This handout discusses how to let other road users know that you intend to turn or stop. While drivers of motorized vehicles use their blinkers or backup lights to communicate, as a driver of a bicycle, you will do this with hand signals.

## Front View

## Hand Signal

## Back View



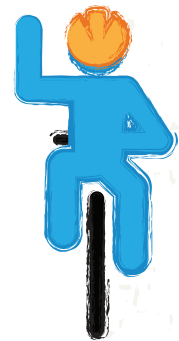
### Left Turn

Extend your left arm out sideways with all fingers extended or use your index finger to point left.



### Right Turn

Extend your left arm out sideways bent at a 90-degree angle at the elbow joint, hand pointing upward and the palm of hand facing forward.



### Alternative Right Turn

Extend your right arm out straight with all fingers extended or use your index finger to point right.



### Stopping or Slowing

Extend your left arm or right arm sideways and bend your arm at a 90-degree angle at the elbow joint, hand pointing downwards and the palm of your hand facing backwards.



# Hand Signals

So far, you may have only been a passenger or pedestrian, but it is important to let other drivers know if you are stopping or turning. Now that you are driving your first vehicle (your bicycle), it's time to learn some of the rules of the road for communicating with other road users. This handout discusses how to let other road users know that you intend to turn or stop. While drivers of motorized vehicles use their blinkers or backup lights to communicate, as a driver of a bicycle, you will do this with hand signals.

## Front View

## Hand Signal

## Back View



### Left Turn

Extend your left arm out sideways with all fingers extended or use your index finger to point left.



### Right Turn

Extend your left arm out sideways bent at a 90-degree angle at the elbow joint, hand pointing upward and the palm of hand facing forward.



### Alternative Right Turn

Extend your right arm out straight with all fingers extended or use your index finger to point right.



### Stopping or Slowing

Extend your left arm or right arm sideways and bend your arm at a 90-degree angle at the elbow joint, hand pointing downwards and the palm of your hand facing backwards.



# Hand Signals

So far, you may have only been a passenger or pedestrian, but it is important to let other drivers know if you are stopping or turning. Now that you are driving your first vehicle (your bicycle), it's time to learn some of the rules of the road for communicating with other road users. This handout discusses how to let other road users know that you intend to turn or stop. While drivers of motorized vehicles use their blinkers or backup lights to communicate, as a driver of a bicycle, you will do this with hand signals.

## Front View

## Hand Signal

## Back View



### Left Turn

Extend your left arm out sideways with all fingers extended or use your index finger to point left.



### Right Turn

Extend your left arm out sideways bent at a 90-degree angle at the elbow joint, hand pointing upward and the palm of hand facing forward.



### Alternative Right Turn

Extend your right arm out straight with all fingers extended or use your index finger to point right.



### Stopping or Slowing

Extend your left arm or right arm sideways and bend your arm at a 90-degree angle at the elbow joint, hand pointing downwards and the palm of your hand facing backwards.

