

4

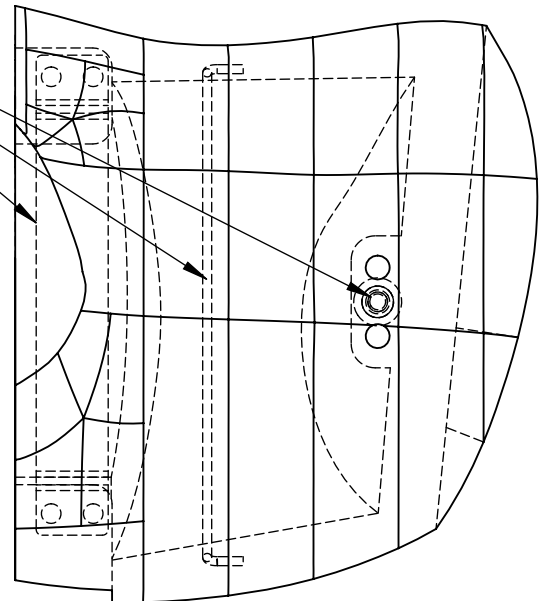
3

2

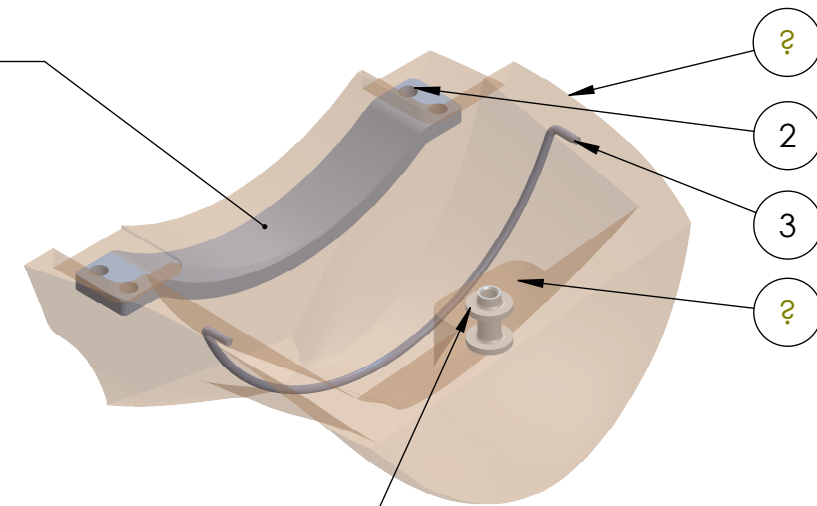
1

REVISIONS				
ZONE	REV.	DESCRIPTION	DATE	APPROVED

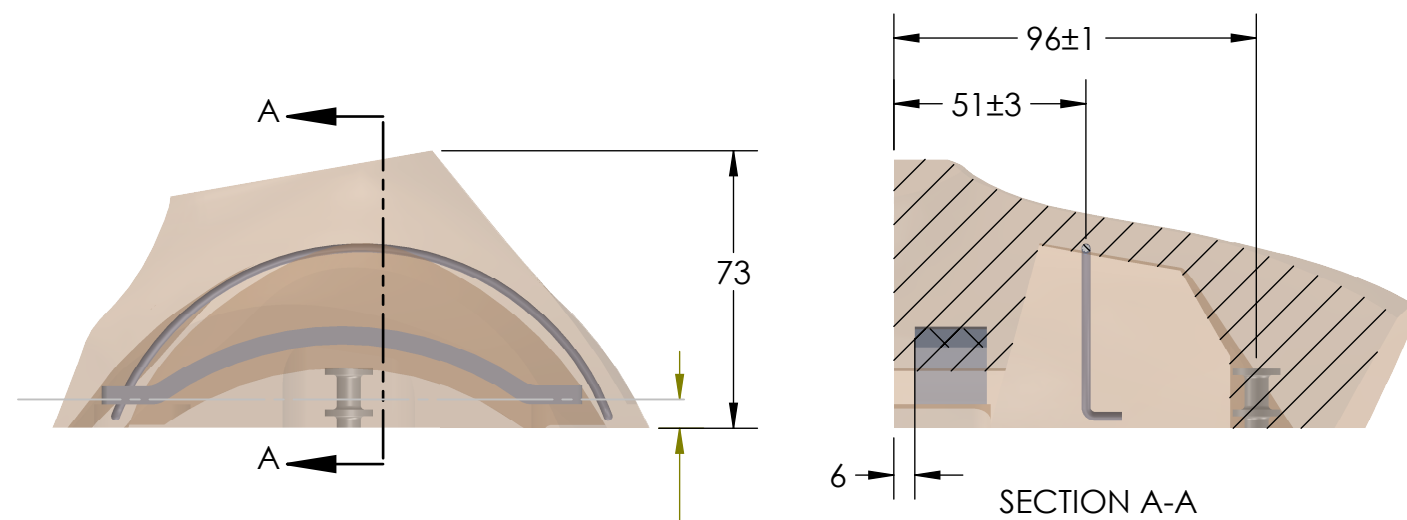
THERE ARE FEATURES BUILT INTO THE MOLD TO LOCATE THESE PARTS



COVER THIS AREA WITH BLACK VELCRO (LOOP)



APPLY PRIMER TO THIS PART



8 THIS PORTION OF THE PART IS Poured WITH SOLID URETHANE

MATERIAL: SKIN, SMOOTH-ON 60 URETHANE RUBBER BLACK
 FILL: SMOOTH-ON IT-X URETHANE FOAM BLACK

ITEM NO.	PART NUMBER	DESCRIPTION	QTY.
1	W50-35044-2	MOLDED SHOULDER PAD, LEFT	1
2	W50-35041	STIFFENER BRACKET	1
3	W50-35043	MID PART STIFFENER	1
4	W50-35048	SHOULDER BUSHING	1

UNLESS OTHERWISE SPECIFIED:

DIMENSIONS ARE IN MM
 TOLERANCES:
 FRACTIONAL ± 1/64
 ANGULAR: MACH ±.5 BEND ±2
 ONE PLACE DECIMAL ±.1
 TWO PLACE DECIMAL ±.05

VEHICLE RESEARCH AND TEST CENTER



NATIONAL HIGHWAY TRAFFIC SAFETY ADMINISTRATION

NAME	DATE	TITLE:
DRAWN		SHOULDER PAD, RIGHT
CHECKED		
ENG APPR.		
APPROVED		

INTERPRET GEOMETRIC TOLERANCING PER: ASME Y14.5-2009

MATERIAL SEE NOTES
 FINISH

SIZE	DWG. NO.	REV
B	W50-35040-2	

DO NOT SCALE DRAWING

SCALE: 1:2

SHEET 1 OF 1

4

3

2

1