

01-022-111B-7779

NSA



SUZUKI MOTOR CORPORATION  
HAMAMATSU-NISHI P.O. BOX 1, 432-91, HAMAMATSU, JAPAN

EXECUTIVE SECRETARIAT

2000 JUL 14 A 7:48

HAMAMATSU JUNE 20, 2000

TELEX J59695  
FAX 81-534-56-0002  
CABLE ADDRESS  
"SUZUKI HAMAMATSU"

NATIONAL HIGHWAY  
TRAFFIC SAFETY ADM.

Your ref. TAL-00062001

Our ref. 45227-VOLVTR

**ORIGINAL**

Administrator  
National Highway Traffic  
Safety Administration  
400 Seventh Street, S.W.,  
Washington, D.C. 20590  
U.S.A.

5 pp

To: VIN Coordinator

Submission of Vehicle Identification Number Coding System  
for CHEVROLET METRO, SUZUKI SWIFT, SUZUKI ESTEEM,  
CHEVROLET TRACKER, SUZUKI VITARA and SUZUKI GRAND VITARA

We hereby submit the above referenced report in accordance with 49 CFR, Part 565,7 (c) & (d).

The CHEVROLET METRO will be distributed under the CHEVROLET brand name.  
The SUZUKI SWIFT will be distributed under the SUZUKI brand name.

The SUZUKI ESTEEM will be distributed under the SUZUKI brand name.

The CHEVROLET TRACKER will be distributed under the CHEVROLET brand name.  
The SUZUKI VITARA will be distributed under the SUZUKI brand name.  
The SUZUKI GRAND VITARA will be distributed under the SUZUKI brand name.

We trust this meets with your approval.

Sincerely,

M. Yokoo  
Masao Yokoo  
Manager

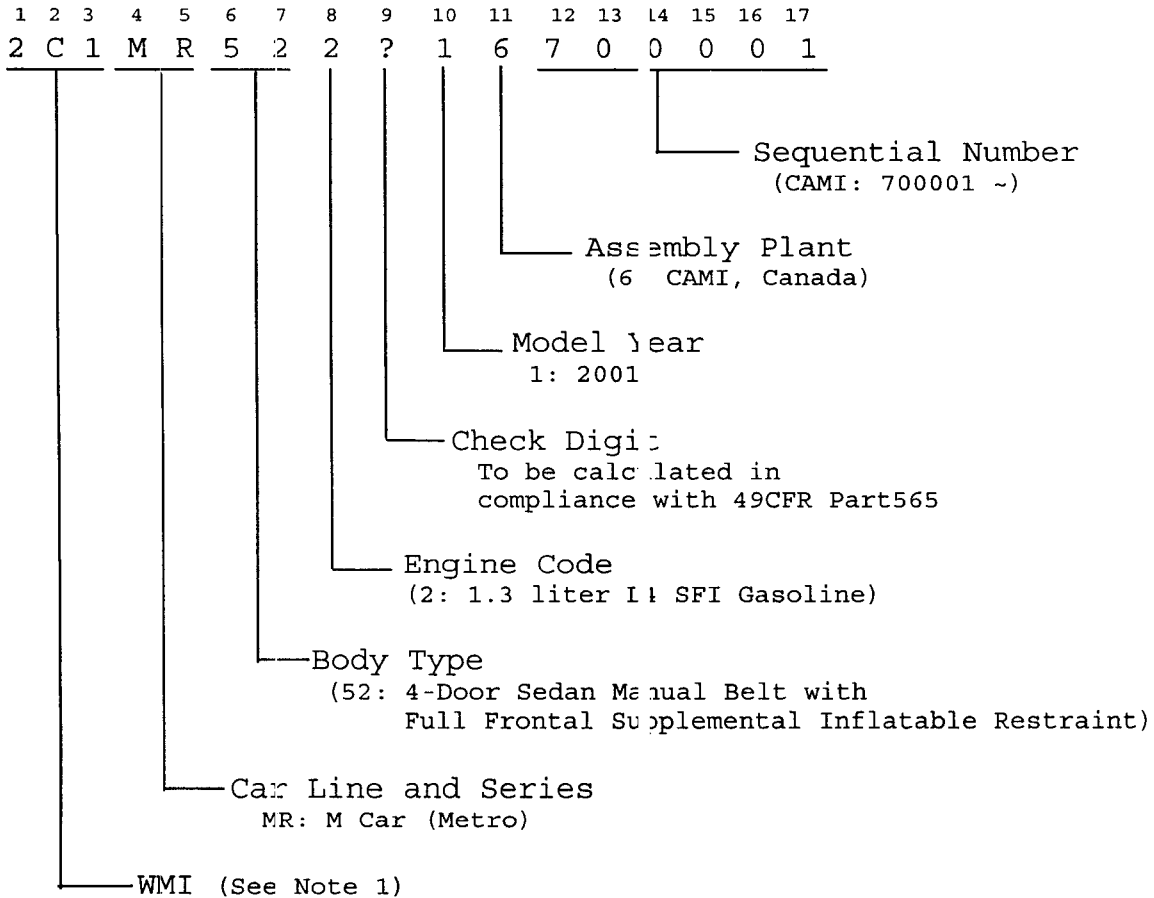
RECEIVED  
BY  
DATE

0001

Vehicle Identification Number Coding System for  
2001 Model Year CHEVROLET Metro

GM VIN system is constructed in accordance with Part 565 - Vehicle Identification Number Requirements, Title 49 Code of Federal Regulations, and which consists of 17 characters of arabic numbers and roman letters.

Each decipherable content of characters and GM's own information are described as follows.

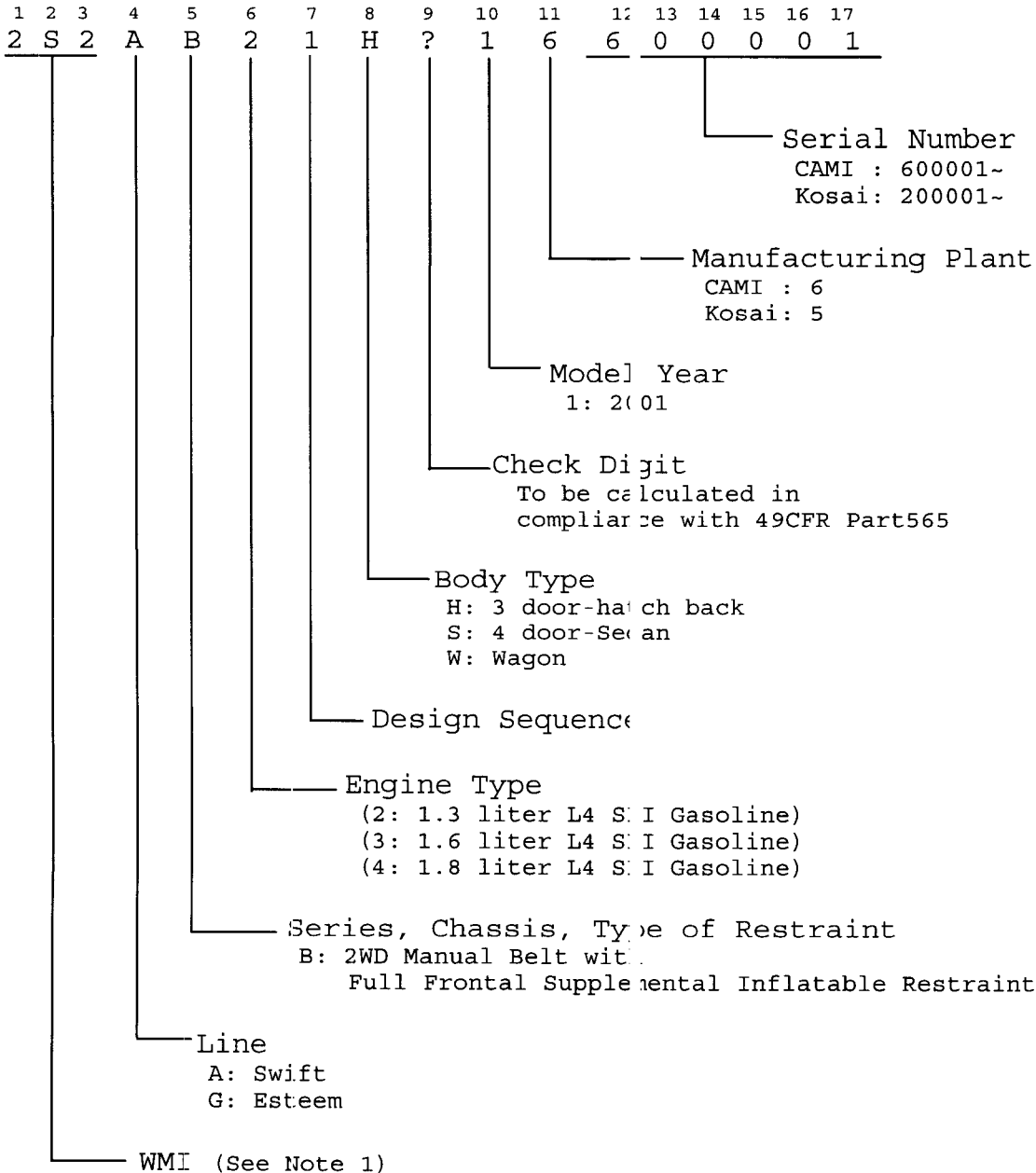


Note : 1. 2C1: Make code for CHEVROLET (CAMI production)  
 Vehicle for sale in U.S.

Vehicle Identification Number Coding System for  
2001 Model Year SUZUKI SWIFT and ESTEEM

SUZUKI VIN system is constructed in accordance with Part 565 - Vehicle Identification Number Requirements, Title 49 Code of Federal Regulations, and which consists of 17 characters of arabic numbers and roman letters.

Each decipherable content of characters and SUZUKI's own information are described as follows.



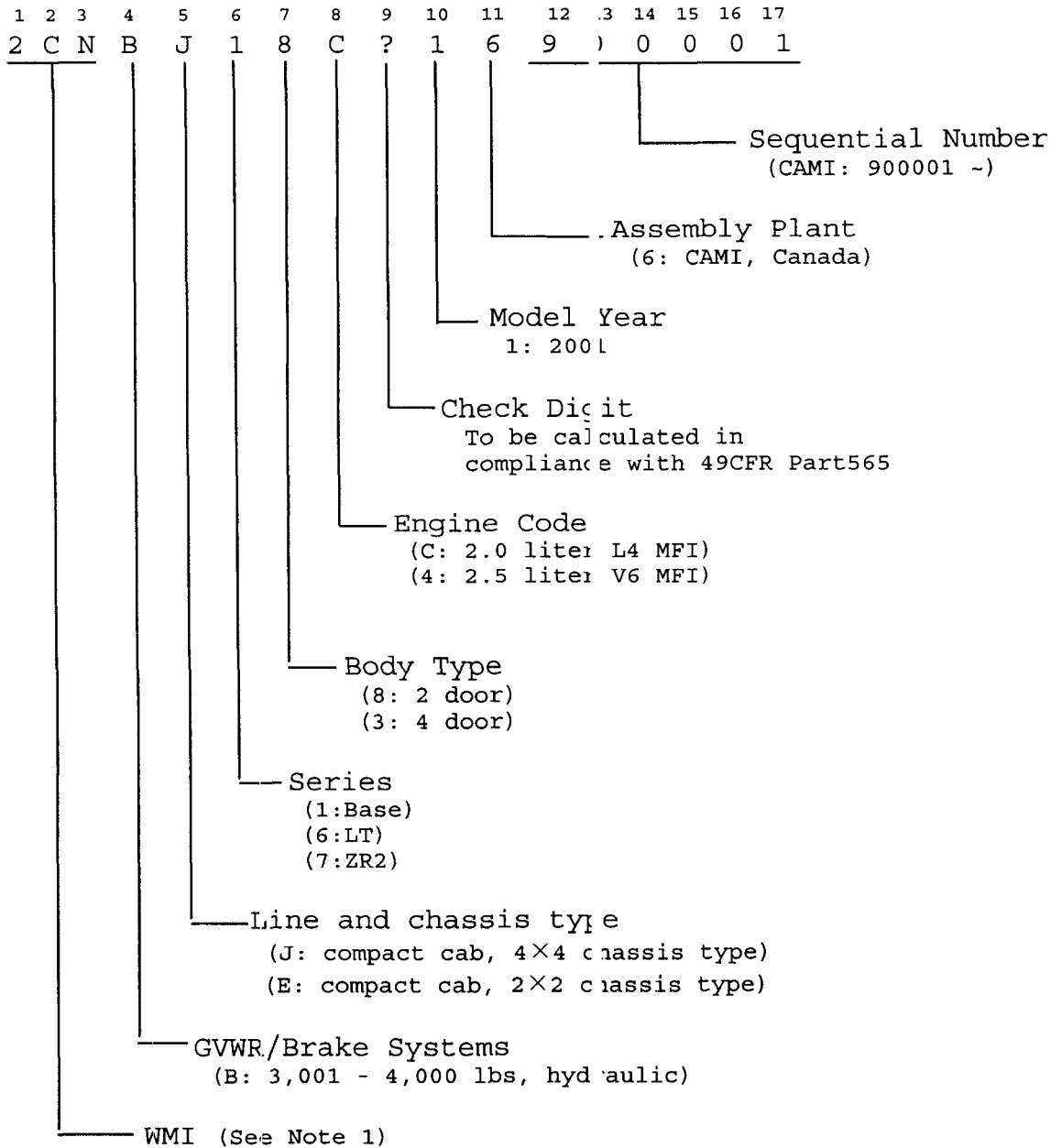
Note : 1. JS2: Make code for SUZUKI (Suzuki Kosai production)  
Vehicle for sale in U.S. and Canada

2S2: Make code for SUZUKI (CAMI production)  
Vehicle for sale in U.S. and Canada

Vehicle Identification Number Coding System for  
2001 Model Year (HEVROLET Tracker

GM VIN system is constructed in accordance with Part 565 - Vehicle Identification Number Requirements, Title 49 Code of Federal Regulations, and which consists of 17 characters of arabic numbers and roman letters.

Each decipherable content of characters and GM's own information are described as follows.

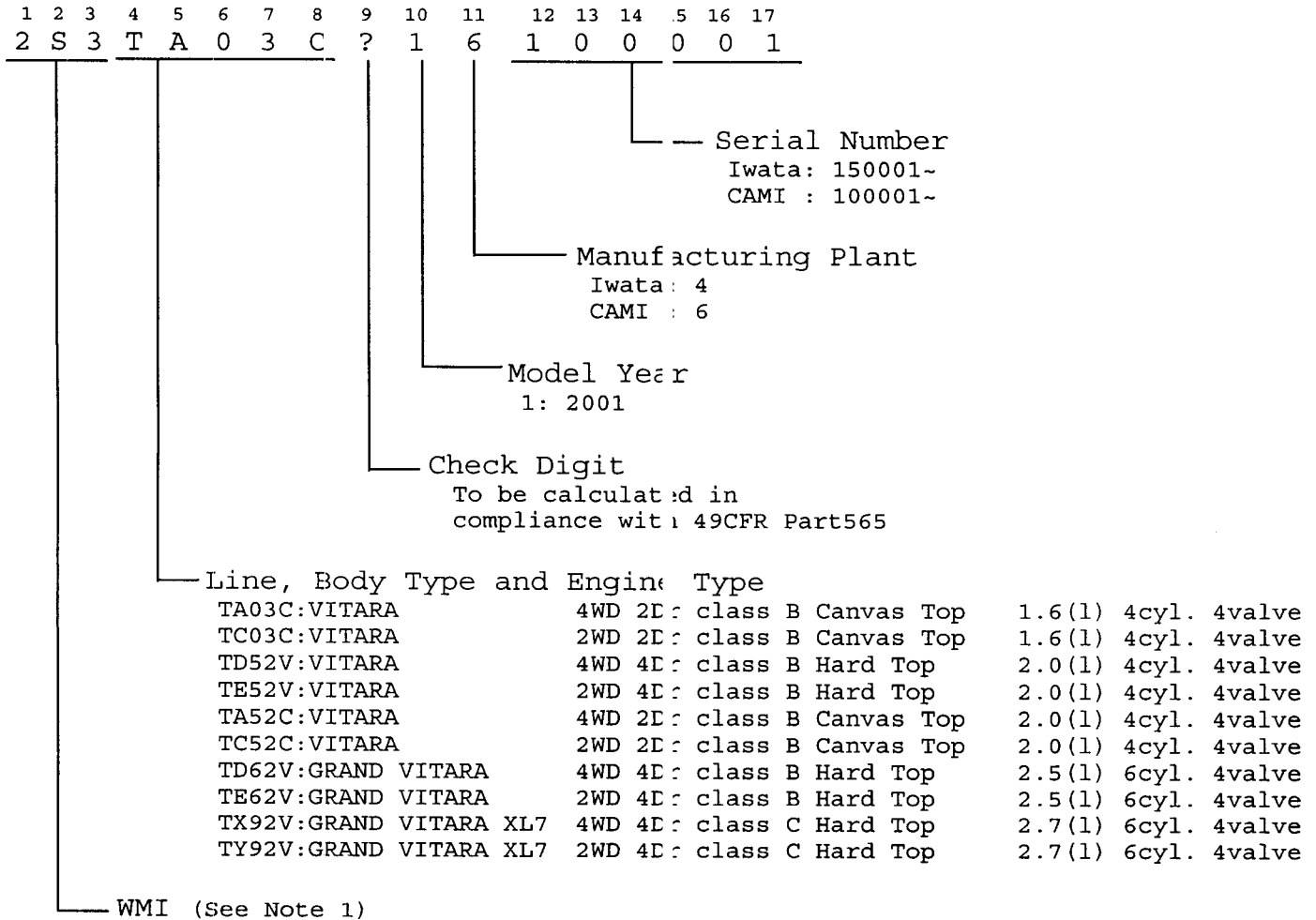


Note : 1. 2CN: Make code for CHEVROLET (CAMI production)  
 Vehicle for sale in U.S. and Canada

Vehicle Identification Number Coding System for  
2001 Model Year SUZUKI VITARA and GRAND VITARA

SUZUKI VIN system is constructed in accordance with Part 565 - Vehicle Identification Number Requirements, Title 49 Code of Federal Regulations, and which consists of 17 characters of arabic numbers and roman letters:

Each decipherable content of characters and SUZUKI's own information are described as follows.



Note : 1. JS3: Make code for SUZUKI (Suzuki Iwata production)  
Vehicle for sale in U.S. and Canada

2S3: Make code for SUZUKI (CAMI production)  
Vehicle for sale in U.S. and Canada