

254

ISUZU

01-022-N11B-7861

ORIGINAL

DET-00-166

September 6, 2000

Administrator
National Highway Traffic Safety Administration
400 Seventh Street, SW. Room 5220
Washington D.C. 20590

12 pgs

RECEIVED
BY 11/11/00

Attn.: VIN Coordinator

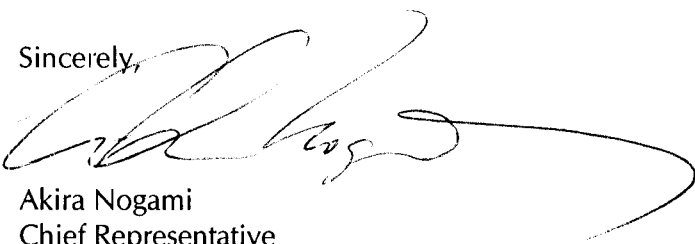
Subject: 2002 Model Year –
VIN Decoding Information

Dear Sir or Madam:

In accordance with § 565.7 of the 49 CFR Part 565, "Vehicle Identification Number," on behalf of Isuzu Motors Limited, Japan, Isuzu Motors America, Inc. hereby submits Isuzu Motors' Vehicle Identification Number (VIN) decoding information for 2002 model year vehicles.

If you have any questions or require additional information, please contact me at 734-455-7557 ext. 264.

Sincerely,



Akira Nogami
Chief Representative
Emissions & Safety
Isuzu Motors America, Inc

Enclosure

cc: ISZA-LA (Including copy for AIMI)
Mr. Suzuki, ISZ-J R109

RECEIVED
2000 SEP - 7 P 2:59
EXECUTIVE SECRETARIAT

0001

ISUZU MOTORS LIMITED

VEHICLE IDENTIFICATION NUMBER
FOR 2002 MODEL YEAR VEHICLES

IN COMPLIANCE WITH
49 CFR PART 565
VEHICLE IDENTIFICATION NUMBER REQUIREMENTS

Issue – September 2000

0002

ISUZU VEHICLE IDENTIFICATION NUMBER

Table of Contents

	Page No.
SECTION A - General Information	
Table A1 World Manufacturer Identifier	1
Table A2 Model Year Code	2
Table A3 Plant Code	3
SECTION B - (Reserved)	
Table B1 (Reserved)	4
Table B2 (Reserved)	4
Table B3 (Reserved)	4
Table B4 (Reserved)	4
Table B5 (Reserved)	4
SECTION C - MPV's, Light Duty Trucks, and Incomplete Vehicles	
Table C1 MPV, Light Duty Truck, and Incomplete Vehicle VIN Layout	5
Table C2 GVWR/Brake System	6
Table C3 Line, Chassis, & Restraint System	6
Table C4 Series	6
Table C5 Body Type	7
Table C6 Engine Code	7
SECTION D - Medium and Heavy Duty Trucks and Incomplete Vehicles	
Table D1 Medium and Heavy Duty Truck and Incomplete Vehicle VIN Layout	8
Table D2 GVWR/Brake System	9
Table D3 Series	9
Table D4 Line/Cab Type	9
Table D5 Chassis Type	9
Table D6 Engine Code	9

MODEL YEAR COMMON

SECTION A - General Information

Table A1 World Manufacturer Identifier (VIN positions 1, 2, and 3)

<u>Code</u>	<u>Make</u>	<u>Type</u>
ISUZU MOTORS LIMITED, JAPAN		
JAC	ISUZU	Multipurpose Passenger Vehicle
JAL	ISUZU	Incomplete Vehicle - Medium & Heavy Duty
J8B	CHEVROLET	Incomplete Vehicle - Medium & Heavy Duty
J8D	GMC TRUCK	Incomplete Vehicle - Medium & Heavy Duty
SUBARU - ISUZU AUTOMOTIVE INC., U.S.A.		
4S2	ISUZU	Multipurpose Passenger Vehicle
4S6	HONDA	Multipurpose Passenger Vehicle
GENERAL MOTORS CORPORATION, JANESVILLE ASSEMBLY PLANT, U.S.A.		
4KL	ISUZU	Incomplete Vehicle - Medium & Heavy Duty
4KB	CHEVROLET	Incomplete Vehicle - Medium & Heavy Duty
4KD	GMC TRUCK	Incomplete Vehicle - Medium & Heavy Duty

MODEL YEAR COMMON

SECTION A - General Information

Table A2 Model Year Code (VIN position 10)

<u>Code</u>	<u>Year</u>
A	1980
B	1981
C	1982
D	1983
E	1984
F	1985
G	1986
H	1987
J	1988
K	1989
L	1990
M	1991
N	1992
P	1993
R	1994
S	1995
T	1996
V	1997
W	1998
X	1999
Y	2000
1	2001
2	2002
3	2003
4	2004
5	2005
6	2006
7	2007
8	2008
9	2009
A	2010
B	2011
Etc.	

MODEL YEAR COMMON

SECTION A - General Information

<u>Code</u>	<u>Plant Name</u>		<u>Manufacturer</u>
3	Kawasaki	Japan	Isuzu Motors Ltd.
7	Fujisawa	Japan	Isuzu Motors Ltd.
4	Lafayette, Indiana	U.S.A.	Subaru-Isuzu Automotive Inc.
J	Janesville, Wisconsin	U.S.A.	General Motors Corporation

MODEL YEAR 2002

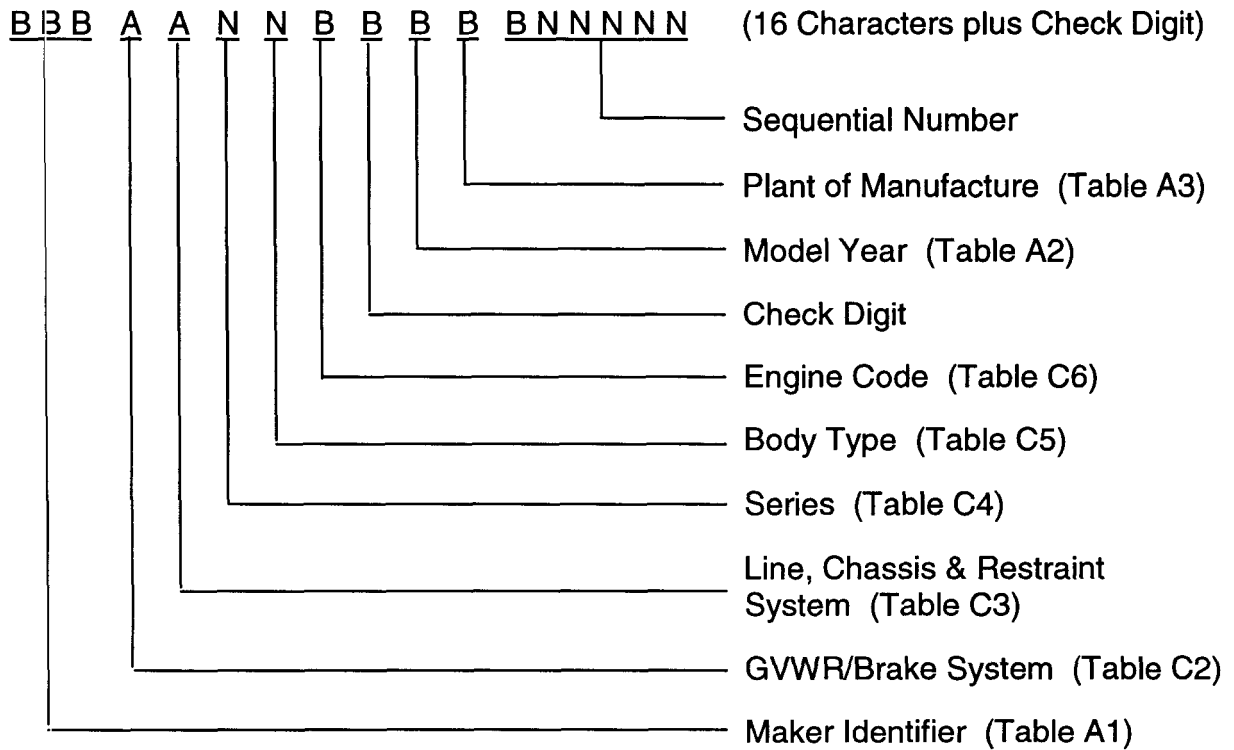
SECTION B - (Reserved)

Table B1	(Reserved)
Table B2	(Reserved)
Table B3	(Reserved)
Table B4	(Reserved)
Table B5	(Reserved)

MODEL YEAR 2002

SECTION C - MPV's, Light Duty Trucks, and Incomplete Vehicles

Table C1 MPV, Light Duty Truck, and Incomplete Vehicle VIN Layout



A - Alpha Characters,
 B - Alpha or Numeric,
 N - Numeric Characters,

MODEL YEAR 2002

SECTION C - MPV's, Light Duty Trucks, and Incomplete Vehicles

Table C2 GVWR/Brake System (VIN position 4)
(All vehicles of these types use Hydraulic Brakes)

<u>Code</u>	<u>GVWR Range (In Pound)</u>
C	4001 - 5000
D	5001 - 6000

Table C3 Line, Chassis, & Restraint System (VIN position 5)

<u>Code</u>	<u>Description</u>
-------------	--------------------

For Vehicles with World Manufacturer Identifier Code: JAC, 4S2

E	Axiom 4X2, Active (Manual) Belts with Driver & Passenger Inflatable Restraint
F	Axiom 4X4, Active (Manual) Belts with Driver & Passenger Inflatable Restraint
J	Trooper, 4X4, Active (Manual) Belts with Driver & Passenger Inflatable Restraint
K	Rodeo or Rodeo Sport, 4X2, Active (Manual) Belts with Driver & Passenger Inflatable Restraint
M	Rodeo or Rodeo Sport, 4X4, Active (Manual) Belts with Driver & Passenger Inflatable Restraint
N	VehiCross, 4X4, Active (Manual) Belts with Driver & Passenger Inflatable Restraint
S	Trooper, 4X2, Active (Manual) Belts with Driver & Passenger Inflatable Restraint

For Vehicles with World Manufacturer Identifier Code: 4S6

K	Passport, 4X2, Active (Manual) Belts with Driver & Passenger Inflatable Restraint
M	Passport, 4X4, Active (Manual) Belts with Driver & Passenger Inflatable Restraint

Table C4 Series (VIN position 6)

<u>Code</u>	<u>Description</u>
5	4- or 5-seater plus 1/4 ton (nominal)

MODEL YEAR 2002

SECTION C - MPV's, Light Duty Trucks, and Incomplete Vehicles

Table C5 Body Type (VIN position 7)

<u>Code</u>	<u>Description</u>
5	Utility, 2 door, long wheelbase
7	Utility, 2 door, short wheelbase
8	Utility, 4 door

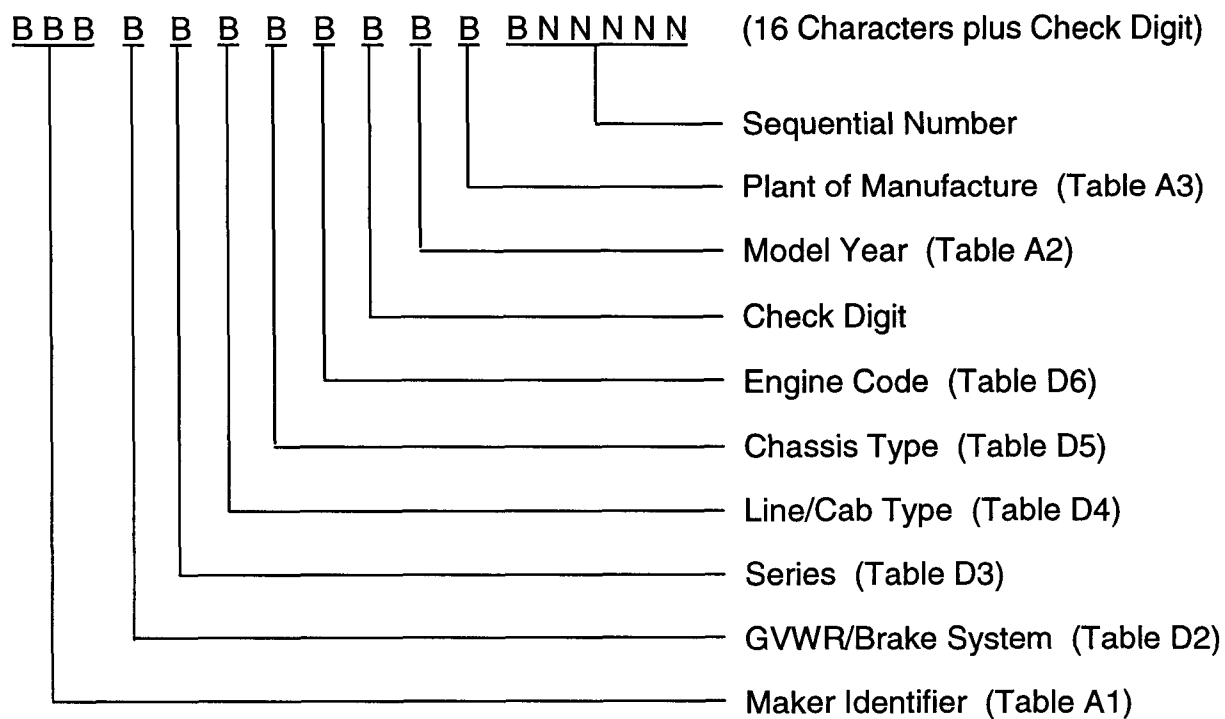
Table C6 Engine Code (VIN position 8)

<u>Code</u>	<u>Type</u>	<u>Description</u>	<u>Make</u>
D	Y22SE	2.2L, L4, Gasoline - DOHC	HOLDEN
W	6VD1	3.2L, V6, Gasoline - DOHC	ISUZU
X	6VE1	3.5L, V6, Gasoline - DOHC	ISUZU

MODEL YEAR 2002

SECTION D - Medium and Heavy Duty Trucks and Incomplete Vehicles

Table D1 Medium and Heavy Duty Truck, and Incomplete Vehicle VIN Layout



A - Alpha Characters,
 B - Alpha or Numeric,
 N - Numeric Characters,

MODEL YEAR 2002

SECTION D - Medium and Heavy Duty Trucks and Incomplete Vehicles

Table D2 GVWR/Brake System (VIN position 4)

<u>Code</u>	<u>GVWR Range (In Pounds)</u>	<u>Brake System</u>
B	10001 - 14000	Hydraulic Brake
C	14001 - 16000	Hydraulic Brake
E	16001 - 19500	Hydraulic Brake
F	16001 - 19500	Air Brake

Table D3 Series (VIN position 5)

<u>Code</u>	<u>Description</u>
4	W3500, W4500, NPR, or NPR-HD
5	W5500, WT5500, NQR, or FRR

Table D4 Line/Cab Type (VIN position 6)

<u>Code</u>	<u>Description</u>
B	Tilt Cab, BBC = 68 Inches
C	Tilt Cab, BBC = 86 Inches
J	Non-Tilt Cab, BBC = 109 Inches

BBC: Bumper to Back of Cab

Table D5 Chassis Type (VIN position 7)

<u>Code</u>	<u>Description</u>
1	4X2, 2 Axles, 1 Driving

Table D6 Engine Code (VIN position 8)

<u>Code</u>	<u>Type</u>	<u>Description</u>	<u>Make</u>
4	4HE1-XS	4.75L, L4, Diesel, Turbo Intercooler, High Power	ISUZU
5	4HE1-XN	4.75L, L4, Diesel, Turbo Intercooler	ISUZU
R		5.7L, V8, Gasoline	GM
3	6HK1-TC	7.8L, L6, Diesel, Turbo Intercooler	ISUZU