

01-022-N11B-8729

ISUZU
DET-02-128

August 1, 2002

ORIGINAL

NSA 33

12 pp

EXECUTIVE SECRETARIAT
2002 AUG -2 P 12.07
NATIONAL HIGHWAY
TRAFFIC SAFETY ADM.

Administrator
National Highway Traffic Safety Administration
400 Seventh Street, SW
Washington, DC 20590

Attn.: VIN Coordinator

Subject: Isuzu VIN Decoding Information Report –
2003 Model Year –
Revised

Dear Sir or Madam:

In accordance with §565.7 of 49 CFR Part 565. Vehicle Identification Number Requirements, on behalf of Isuzu Motors Limited, Isuzu Motors America, Inc. hereby submits a revised Vehicle Identification Number (VIN) decoding information for 2003 model year Isuzu vehicles. There are two changes made to the enclosed VIN decoding:

1. Code and Description for Trooper in the Table C3 Line, Chassis, & Restraint System (VIN position 5) are deleted. The model Trooper will be no longer produced in or after 2003 model year.
2. Code "U" and its Description for GM 6.0L V8 gas engine for model NPR is added in the Table D6 Engine Code (VIN position 8). This engine will be introduced in early 2003 CY.

If you have any questions or require additional information, please contact me at 734-455-7557 ext. 262 or Christine Lyons of my staff at ext. 260.

Sincerely,



Jeffery A. Marsee
Chief Representative
Emissions & Safety
Isuzu Motors America, Inc.

/cfl

Enclosure

cc: Mr. Suzuki, ISZJ-F R58

0001

ISUZU MOTORS LIMITED

VEHICLE IDENTIFICATION NUMBER
FOR 2003 MODEL YEAR VEHICLES

IN COMPLIANCE WITH
49 CFR PART 565
VEHICLE IDENTIFICATION NUMBER REQUIREMENTS

Issue November 2001
Revised August 2002

0002

ISUZU VEHICLE IDENTIFICATION NUMBER

Table of Contents

	<u>Page No.</u>
SECTION A - General Information	
Table A1 World Manufacturer Identifier	1
Table A2 Model Year Code	2
Table A3 Plant Code	3
SECTION B - (Reserved)	
Table B1 (Reserved)	4
Table B2 (Reserved)	4
Table B3 (Reserved)	4
Table B4 (Reserved)	4
Table B5 (Reserved)	4
SECTION C - MPV's, Light Duty Trucks, and Incomplete Vehicles	
Table C1 MPV, Light Duty Truck, and Incomplete Vehicle VIN Layout	5
Table C2 GVWR/Brake System	6
Table C3 Line, Chassis, & Restraint System	6
Table C4 Series	6
Table C5 Body Type	7
Table C6 Engine Code	7
SECTION D - Medium and Heavy Duty Trucks and Incomplete Vehicles	
Table D1 Medium and Heavy Duty Truck and Incomplete Vehicle VIN Layout	8
Table D2 GVWR/Brake System	9
Table D3 Series	9
Table D4 Line/Cab Type	9
Table D5 Chassis Type	9
Table D6 Engine Code	9

MODEL YEAR COMMON

SECTION A - General Information

Table A1 World Manufacturer Identifier (VIN positions 1, 2, and 3)

<u>Code</u>	<u>Make</u>	<u>Type</u>
ISUZU MOTORS LIMITED, JAPAN		
JAC	ISUZU	Multipurpose Passenger Vehicle
JAL	ISUZU	Incomplete Vehicle - Medium & Heavy Duty
J8B	CHEVROLET	Incomplete Vehicle - Medium & Heavy Duty
J8D	GMC TRUCK	Incomplete Vehicle - Medium & Heavy Duty
SUBARU - ISUZU AUTOMOTIVE INC., U.S.A.		
4S2	ISUZU	Multipurpose Passenger Vehicle
GENERAL MOTORS CORPORATION, JANESVILLE ASSEMBLY PLANT, U.S.A.		
4KL	ISUZU	Incomplete Vehicle - Medium & Heavy Duty
4KB	CHEVROLET	Incomplete Vehicle - Medium & Heavy Duty
4KD	GMC TRUCK	Incomplete Vehicle - Medium & Heavy Duty

MODEL YEAR COMMON

SECTION A - General Information

Table A2 Model Year Code (VIN position 10)

<u>Code</u>	<u>Year</u>
A	1980
B	1981
C	1982
D	1983
E	1984
F	1985
G	1986
H	1987
J	1988
K	1989
L	1990
M	1991
N	1992
P	1993
R	1994
S	1995
T	1996
V	1997
W	1998
X	1999
Y	2000
1	2001
2	2002
3	2003
4	2004
5	2005
6	2006
7	2007
8	2008
9	2009
A	2010
B	2011
Etc.	

MODEL YEAR COMMON

SECTION A - General Information

Table A3	Plant Code (VIN position 11)		
<u>Code</u>	<u>Plant Name</u>		<u>Manufacturer</u>
3	Kawasaki	Japan	Isuzu Motors Ltd.
7	Fujisawa	Japan	Isuzu Motors Ltd.
4	Lafayette, Indiana	U.S.A.	Subaru-Isuzu Automotive Inc.
J	Janesville, Wisconsin	U.S.A.	General Motors Corporation

MODEL YEAR 2003

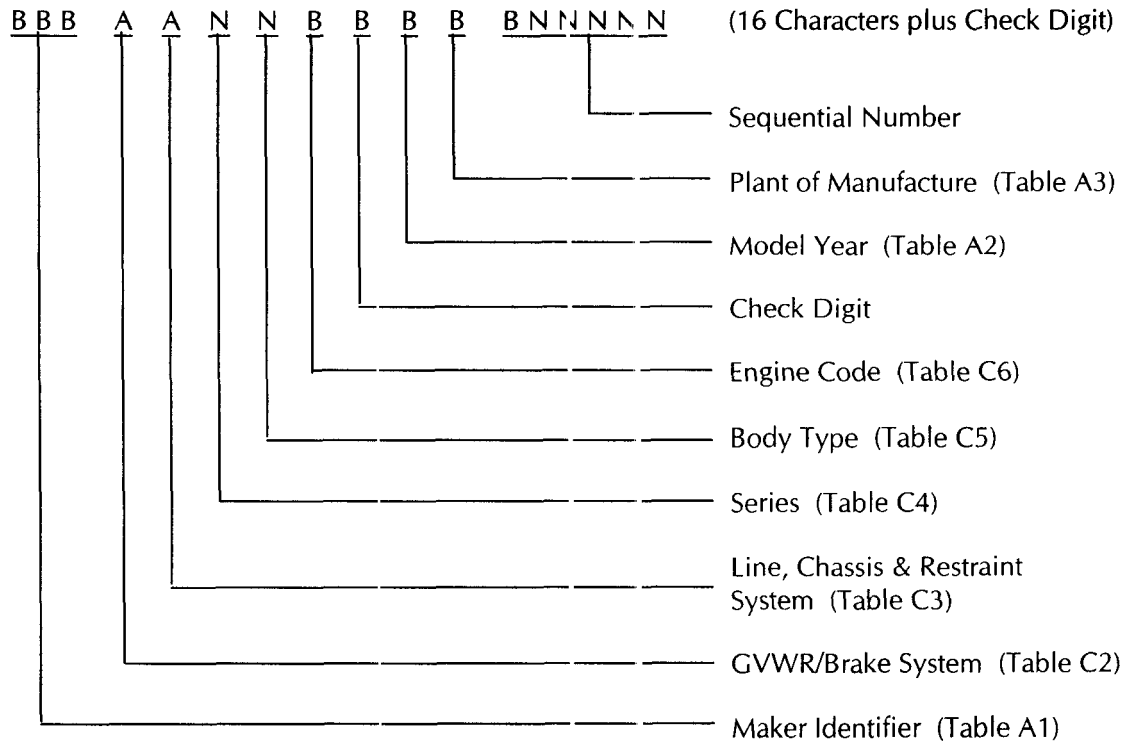
SECTION B - (Reserved)

Table B1	(Reserved)
Table B2	(Reserved)
Table B3	(Reserved)
Table B4	(Reserved)
Table B5	(Reserved)

MODEL YEAR 2003

SECTION C - MPV's, Light Duty Trucks, and Incomplete Vehicles

Table C1 MPV, Light Duty Truck, and Incomplete Vehicle VIN Layout



A - Alpha Characters,
B - Alpha or Numeric,
N - Numeric Characters,

MODEL YEAR 2003

SECTION C - MPV's, Light Duty Trucks, and Incomplete Vehicles

Table C2 GVWR/Brake System (VIN position 4)
(All vehicles of these types use Hydraulic Brakes:)

<u>Code</u>	<u>GVWR Range (In Pound)</u>
C	4001 - 5000
D	5001 - 6000

Table C3 Line, Chassis, & Restraint System (VIN position 5)

<u>Code</u>	<u>Description</u>
-------------	--------------------

For Vehicles with World Manufacturer Identifier Code: JAC, 452

E	Axiom, 4X2, Active(Manual) Belts with Driver & Passenger Inflatable Restraint
F	Axiom, 4X4, Active(Manual) Belts with Driver & Passenger Inflatable Restraint
J	Trooper, 4X4, Active (Manual) Belts with Driver & Passenger Inflatable Restraint
K	Rodeo or Rodeo Sport, 4X2, Active (Manual) Belts with Driver & Passenger Inflatable Restraint
M	Rodeo or Rodeo Sport, 4X4, Active (Manual) Belts with Driver & Passenger Inflatable Restraint
S	Trooper, 4X2, Active (Manual) Belts with Driver & Passenger Inflatable Restraint

Table C4 Series (VIN position 6)

<u>Code</u>	<u>Description</u>
5	4- or 5-seater plus 1.4 ton (nominal)

MODEL YEAR 2003

SECTION C - MPV's, Light Duty Trucks, and Incomplete Vehicles

Table C5 Body Type (VIN position 7)

<u>Code</u>	<u>Description</u>
5	Utility, 2 door, long wheelbase
7	Utility, 2 door, short wheelbase
8	Utility, 4 door

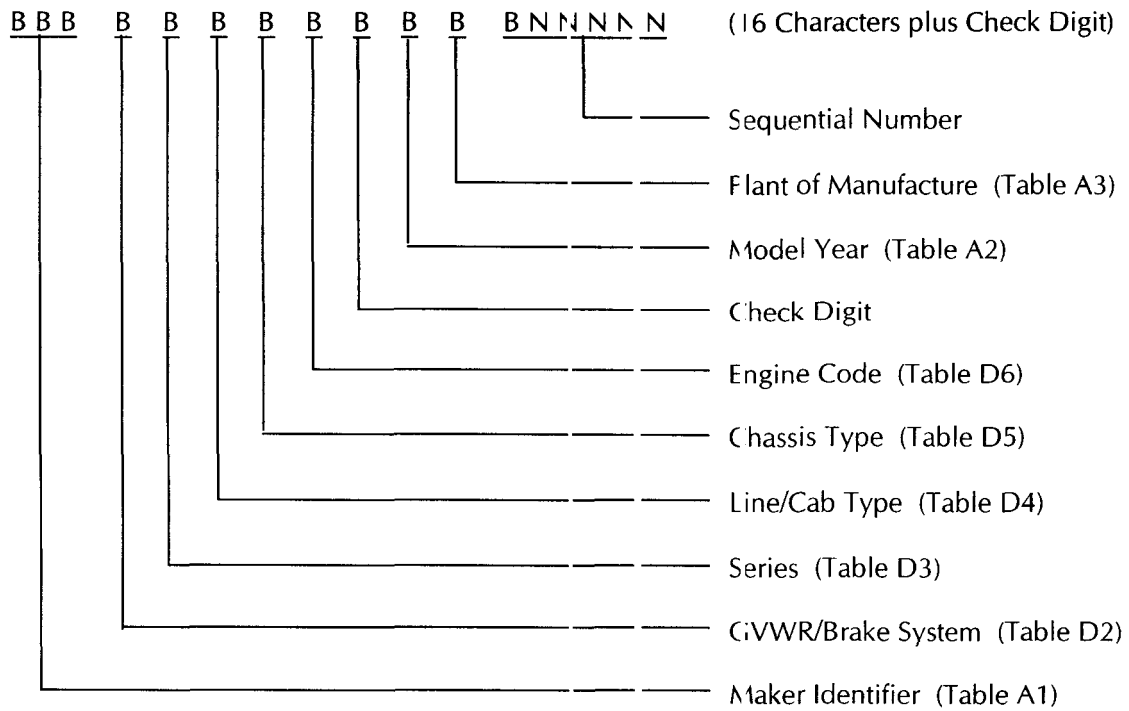
Table C6 Engine Code (VIN position 8)

<u>Code</u>	<u>Type</u>	<u>Description</u>	<u>Make</u>
D	Y22SE	2.2L, L4, Gasoline - DOHC	HOLDEN
W	6VD1	3.2L, V6, Gasoline - DOHC	ISUZU
X	6VE1	3.5L, V6, Gasoline - DOHC	ISUZU

MODEL YEAR 2003

SECTION D - Medium and Heavy Duty Trucks and Incomplete Vehicles

Table D1 Medium and Heavy Duty Truck, and Incomplete Vehicle VIN Layout



A - Alpha Characters,
B - Alpha or Numeric,
N - Numeric Characters,

MODEL YEAR 2003

SECTION D - Medium and Heavy Duty Trucks and Incomplete Vehicles

Table D2 GVWR/Brake System (VIN position 4)

<u>Code</u>	<u>GVWR Range (In Pounds)</u>	<u>Brake System</u>
B	10001 - 14000	Hydraulic Brake
C	14001 - 16000	Hydraulic Brake
E	16001 - 19500	Hydraulic Brake
F	16001 - 19500	Air Brake

Table D3 Series (VIN position 5)

<u>Code</u>	<u>Description</u>
4	W3500, V4500, NPR, or NPR-HD
5	W5500, V7500, NQR, or FRR

Table D4 Line/Cab Type (VIN position 6)

<u>Code</u>	<u>Description</u>
B	Tilt Cab, BBC = 68 Inches
C	Tilt Cab, BBC = 86 Inches
J	Non-Tilt Cab, BBC = 109Inches

BBC: Bumper to Back of Cab

Table D5 Chassis Type (VIN position 7)

<u>Code</u>	<u>Description</u>
1	4X2, 2 Axles, 1 Driving

Table D6 Engine Code (VIN position 8)

<u>Code</u>	<u>Type</u>	<u>Description</u>	<u>Make</u>
4	4HE1-XS	4.75L, L4, Diesel, Turbo Intercooler, High Power	ISUZU
5	4HE1-XN	4.75L, L4, Diesel, Turbo Intercooler	ISUZU
R		5.7L, V8, Gasoline C M	
U		6.0L, V8, Gasoline C M	
3	6HK1-TC	7.8L, L6, Diesel, Turbo Intercooler	ISUZU