

Friday October 3, 2003

Docket: 01-022N11-B

| <u>Comment<br/>Number</u> | <u>Date<br/>Received</u> | <u>Submitter/Firm/Subject</u>                       | <u>Pages</u> | <u>Date of<br/>Document</u> |
|---------------------------|--------------------------|---|--------------|-----------------------------|
| 09588                     | 08/29/2003               | OSAKI NAOYUKI<br>MAZDA                              | 4            | 04/18/2003                  |
| 09589                     | 08/29/2003               | SPENCER HOSOKAWA<br>KAWASAKI                        | 4            | 07/14/2003                  |
| 09590                     | 08/29/2003               | SPENCER HOSOKAWA<br>KAWASAKI                        | 4            | 04/29/2003                  |
| 09591                     | 08/29/2003               | SPENCER HOSOKAWA<br>KAWASAKI                        | 4            | 04/22/2003                  |
| 09592                     | 08/29/2003               | WILLIAM R. WILLEN<br>AMERICAN HONDA                 | 11           | 06/26/2003                  |
| 09593                     | 08/29/2003               | MICHAEL V. TYRRELL<br>AMERICAN HONDA                | 1            | 06/11/2003                  |
| 09594                     | 08/29/2003               | MICHAELL V. TYRRELL<br>AMERICAN HONDA               | 2            | 06/11/2003                  |
| 09595                     | 08/29/2003               | WILLIAM R. WILLEN<br>AMERICAN HONDA                 | 3            | 05/29/2003                  |
| 09596                     | 08/29/2003               | TAYLOR POWER SYSTEMS                                | 1            | 05/28/2003                  |
| 09597                     | 08/29/2003               | MICHAEL V. TYRRELL<br>AMERICAN HONDA                | 4            | 04/25/2003                  |
| 09598                     | 08/29/2003               | KEN TOPKA<br>FLEETWOOD                              | 4            | 05/06/2003                  |
| 09599                     | 08/29/2003               | RICHARD KEMPF<br>INTERNATIONAL TRUCK & ENGINE CORP. | 10           | 05/02/2002                  |
| 09600                     | 08/29/2003               | CHRISTOPHER TINTO<br>TOYOTA MOTOR NORTH AMERICA     | 9            | 06/11/2003                  |
| 09601                     | 08/29/2003               | CHRISTOPHER TINTO<br>TOYOTA MOTOR NORTH AMERICA     | 9            | 06/20/2003                  |
| 09602                     | 08/29/2003               | STEPHAN J. SPETH<br>DAIMLERCHRYSLER                 | 7            | 06/25/2003                  |
| 09603                     | 08/29/2003               | RICHARD R. SHYU<br>DAIMLERCHRYSLER                  | 3            | 06/20/2003                  |
| 09604                     | 08/29/2003               | LOUIS J. CARLIN<br>GENERAL MOTORS (GM)<br>USG 3769  | 43           | 07/23/2003                  |

**ORIGINAL**

**TOYOTA**  
**TOYOTA MOTOR NORTH AMERICA, INC.**

WASHINGTON OFFICE  
1850 M STREET, NW, SUITE 600, WASHINGTON, DC 20036

TEL: (202) 775-1707  
FAX: (202) 463-8513

June 20, 2003

01-022-N11B-9601

Dr. Jeffrey W. Runge  
Administrator  
National Highway Traffic Safety Administration  
400 Seventh Street, SW  
Washington, DC 20590

Attention: VIN Coordinator

RE: VIN Coding System on 2004 Model Year Toyota and Lexus Vehicles –  
Supplement

Dear Dr. Runge:

We are informing you of a change to the material regarding the VIN Coding System applicable to 2004 model year Toyota and Lexus vehicles that we submitted on November 25, 2002 and May 28, 2003.

In the previously submitted documents, for "Scion xA" and "Scion xB" the make was listed as Scion. The make, however, should have been listed as Toyota, with Scion xA and Scion xB listed as models (see revised pages 2 and 3).

Please replace the previous submissions with this Supplement dated June, 2003.

We are sorry for this inconvenience and thank you for your cooperation in this matter.

Sincerely,

TOYOTA MOTOR NORTH AMERICA, INC.

*C. Coombs for*  
Christopher Tinto  
Director

CT:cc  
Enclosure

EXECUTIVE SECRETARIAT  
2003 JUN 23 P 4:45  
NATIONAL HIGHWAY  
TRAFFIC SAFETY ADM.

0001

TOYOTA & LEXUS VEHICLE IDENTIFICATION NUMBER

CODING SYSTEM

APPLICABLE TO 2004 MODELS

[ Manufactured by TOYOTA ]

Supplement to  
"TOYOTA & LEXUS Vehicle Identification Number Coding System  
Applicable to 2004 Models"  
(Dated November 2002)

This information includes  
the following new models;

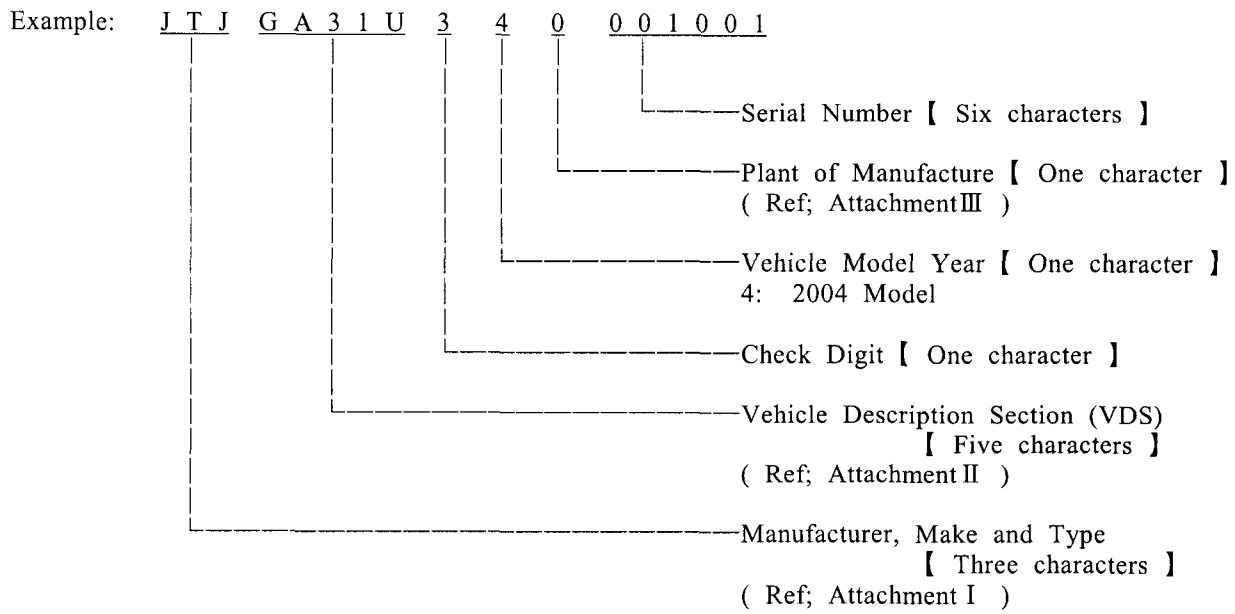
|                     |             |
|---------------------|-------------|
| TOYOTA COROLLA      | LEXUS RX330 |
| TOYOTA PRIUS        | LEXUS LS430 |
| TOYOTA CAMRY        | LEXUS ES330 |
| TOYOTA CELICA       | LEXUS GS300 |
| TOYOTA MR2          | LEXUS GS430 |
| TOYOTA RAV4         | LEXUS IS300 |
| TOYOTA HIGHLANDER   | LEXUS SC430 |
| TOYOTA ECHO         | LEXUS GX470 |
| TOYOTA LAND CRUISER | LEXUS LX470 |
| TOYOTA 4RUNNER      |             |
| TOYOTA SCION xA     |             |
| TOYOTA SCION xB     |             |

## TABLE OF CONTENTS

| <u>Contents</u>                    | <u>Page</u>                 |
|------------------------------------|-----------------------------|
| TOYOTA & LEXUS 'VIN' Coding system | 1                           |
| Attachment I (1st section)         | 2                           |
| Attachment II (2nd section)        | 3                           |
| Attachment III (3rd section)       | 6                           |
| Abbreviations                      |                             |
| DR                                 | Door                        |
| SDN                                | Sedan                       |
| #1 LB                              | Liftback                    |
| WGN                                | Wagon                       |
| VDS                                | Vehicle Description Section |
| W/                                 | With                        |
| GVWR                               | Gross Vehicle Weigh Rating  |
| 2WD                                | Two-Wheel Drive             |
| 4WD                                | Four-Wheel Drive            |
| #1 HB                              | Hach back                   |

#1 added 03/13/02

# TOYOTA & LEXUS 'VIN' Coding System



TOYOTA & LEXUS 2004 MODEL  
MANUFACTURER, MAKE AND TYPE CODE

| Code   | Manufacturer | Make         | Type                              |
|--------|--------------|--------------|-----------------------------------|
| JTD    | Toyota       | Toyota       | Passenger Car                     |
| JTK    | Toyota       | Toyota<br>#2 | Passenger Car                     |
| #1 JTE | Toyota       | Toyota       | Multipurpose<br>Passenger Vehicle |
| #1 JT3 | Toyota       | Toyota       | Multipurpose<br>Passenger Vehicle |
| JTL    | Toyota       | Toyota<br>#2 | Multipurpose<br>Passenger Vehicle |
| #1 JTH | Toyota       | Lexus        | Passenger Car                     |
| #1 JT8 | Toyota       | Lexus        | Passenger Car                     |
| JTJ    | Toyota       | Lexus        | Multipurpose<br>Passenger Vehicle |

#1 added 03/13/02  
#2 revised 06/17/03

## Attachment II

## TOYOTA &amp; LEXUS 2004 Model VDS Code

## I Passenger Car

## Character of the VDS

| Car Line Name        | 1st Digit |                            | 2nd Digit   |                  | 3rd Digit |                    | 4th Digit             |  | 5th Digit |                |
|----------------------|-----------|----------------------------|-------------|------------------|-----------|--------------------|-----------------------|--|-----------|----------------|
|                      | Body Type |                            | Engine Type |                  | Series    |                    | Restraint System Type |  | Line      |                |
| COROLLA              | B         | 4DR SDN 2WD                | R           | 1ZZ-FE           | 3         | ZZE130L            | 2<br>8                | D&P Seats: Manual Belt<br>W/ Air Bag<br>D&P Seats: Manual Belt<br>W/ Air Bag<br>and Side Air Bag   | E         | COROLLA        |
| SCION xA<br>#<br>2   | K         | 5DR SDN 2WD                | T           | 1NZ-FE           | 6         | NCP61L             | 0<br>2                | D&P Seats: Manual Belt<br>W/ Air Bag<br>and Side Air Bag<br>and Curtain Shield Air Bag<br>(Front & Rear Seats)<br>D&P Seats: Manual Belt<br>W/ Air Bag | 4         | SCION x<br>A   |
| PRIUS<br>#1          | K         | 4DR HB 2WD                 | B           | 1NZ-FXE          | 2         | NHW20L             | 0<br>2                | D&P Seats: Manual Belt<br>W/ Air Bag<br>and Side Air Bag<br>and Curtain Shield Air Bag<br>(Front & Rear Seats)<br>D&P Seats: Manual Belt<br>W/ Air Bag | U         | PRIUS          |
| LS430<br>#1          | B         | 4DR SDN 2WD                | N           | 3UZ-FE           | 3         | UCF30L             | 6                     | D&P Seats: Manual Belt<br>W/ Air Bag<br>and Knee Air Bag<br>and Side Air Bag<br>And Curtain Shield Air Bag   | F         | LS430          |
| GS300<br>GS430<br>#1 | B         | 4DR SDN 2WD                | D<br>L      | 2JZ-GE<br>3UZ-FE | 6         | JZS160L<br>UZS161L | 9                     | D&P Seats: Manual Belt<br>W/ Air Bag<br>and Side Air Bag<br>and Curtain Shield Air Bag<br>(Front Seat only)  | S<br>S    | GS300<br>GS430 |
| IS300<br>#1          | B<br>E    | 4DR SDN 2WD<br>4DR WGN 2WD | D           | 2JZ-GE           | 1         | JCE10L             | 9                     | D&P Seats: Manual Belt<br>W/ Air Bag<br>and Side Air Bag<br>and Curtain Shield Air Bag<br>(Front Seat only)  | 2         | IS300          |
| ES330<br>#1          | B         | 4DR SDN 2WD                | A           | 3MZ-FE           | 3         | MCV31L             | 0                     | D&P Seats: Manual Belt<br>W/ Air Bag<br>and Side Air Bag<br>and Curtain Shield Air Bag<br>(Front & Rear Seats)   | G         | ES330          |

|              |        |                            |             |                            |             |                            |            |  |   |        |
|--------------|--------|----------------------------|-------------|----------------------------|-------------|----------------------------|------------|--|---|--------|
| CAMRY<br>#1  | B      | 4DR SDN 2WD                | E<br>F<br>A | 2AZ-FE<br>1MZ-FE<br>3MZ-FE | 3<br>3<br>3 | ACV30L<br>MCV30L<br>MCV31L | 0<br><br>2 | D&P Seats: Manual Belt<br>W/ Air Bag<br>and Side Air Bag<br>and Curtain Shield Air Bag<br>(Front & Rear Seats)<br>D&P Seats: Manual Belt<br>W/ Air Bag | K | CAMRY  |
| CELICA<br>#1 | D      | LB 2WD                     | R<br>Y      | 1ZZ-FE<br>2ZZ-GE           | 3<br>3      | ZZT230L<br>ZZT231L         | 2<br>8     | D&P Seats: Manual Belt<br>W/ Air Bag<br>D&P Seats: Manual Belt<br>W/ Air Bag<br>and Side Air Bag   | T | CELICA |
| MR2<br>#1    | F      | 2DR Convertible<br>2WD     | R           | 1ZZ-FE                     | 3           | ZZW30L                     | 2          | D&P Seats: Manual Belt<br>W/ Air Bag   | 0 | MR2    |
| SC430<br>#1  | F      | Convertible<br>2WD         | N           | 3UZ-FE                     | 4           | UZZ40L                     | 8          | D&P Seats: Manual Belt<br>W/ Air Bag<br>and Side Air Bag   | Y | SC430  |
| ECHO<br>#1   | B<br>A | 4DR SDN 2WD<br>2DR SDN 2WD | T           | 1NZ-FE                     | 1           | NCP12L                     | 2<br>8     | D&P Seats: Manual Belt<br>W/ Air Bag<br>D&P Seats: Manual Belt<br>W/ Air Bag<br>and Side Air Bag   | 3 | ECHO   |

#1 added 03/13/0  
#2 revised 06/17/03



## II Multipurpose Passenger Vehicle

### Character of the VDS

| Car Line Name            | 1st Digit  |                            | 2nd Digit   |        | 3rd Digit |                  | 4th Digit |     | 5th Digit |        |
|--------------------------|--|----------------------------|-------------|--------|-----------|------------------|-----------|-----|-----------|--------|
|                          | Body Type  |                            | Engine Type |        | Series    |                  | Grade     |     | Line      |        |
| RX 330 2WD<br>RX 330 4WD | G<br>H   | 4DR WGN 2WD<br>4DR WGN 4WD | A           | 3MZ-FE | 3<br>3    | MCU33L<br>MCU38L | 1         | STD | U         | RX 330 |
|                          | GVWR (from 1st to 5th Digits)<br>GA31U --- 5245 lb (Class D) |                            |             |        |           |                  |           |     |           |        |

#1 added 03/13/0  
#2 revised 06/17/03

## TOYOTA &amp; LEXUS 2004 MODEL MANUFACTURING PLANT CODE

| Car Line Name                          |    | Applicable VDS | Code (11th Digit) | Plant of Manufacture                        |
|--|----|----------------|-------------------|---|
| COROLLA                                |    | BR3*E          | 0 - 1             | Takaoka Plant, Toyota Motor Corp.           |
|  |    |                | 2 - 9             | Nagakusa Plant, Toyota Industries Corp.     |
| RX 330 2WD<br>RX 330 4WD               |    | *A31U          | 0 - 9             | Toyota Motor Kyushu, Inc.                   |
| SCION xA                               | #2 | KT6*4          | 0 - 9             | Takaoka Plant, Toyota Motor Corp.           |
| SCION xB                               | #2 | KT334          | 0 - 9             | Takaoka Plant, Toyota Motor Corp.           |
| PRIUS                                  | #1 | KB2*U          | 0 - 9             | Tsutsumi Plant, Toyota Motor Corp.          |
| LS 430                                 | #1 | BN36F          | 0 - 9             | Tahara Plant, Toyota Motor Corp.            |
| GS 300/GS 430                          | #1 | B*6*S          | 0 - 9             | Tahara Plant, Toyota Motor Corp.            |
| IS 300                                 | #1 | *D192          | 0 - 9             | Iwate Plant, Kanto Auto Works, LTD.         |
| ES 330                                 | #1 | BA30G          | 0 - 4             | Tsutsumi Plant, Toyota Motor Corp.          |
|  |    |                | 5 - 6             | Iwate Plant, Kanto Auto Works, LTD.         |
| CAMRY                                  | #1 | BE3*K          | 0 - 3             | Tsutsumi Plant, Toyota Motor Corp.          |
|  |    | BF3*K          | 0 - 4             | Tsutsumi Plant, Toyota Motor Corp.          |
|  |    | BA3*K          | 0 - 4             | Tsutsumi Plant, Toyota Motor Corp.          |
| CELICA                                 | #1 | D*3*T          | 0 - 9             | Higashifuji Plant, Kanto Auto Works, LTD.   |
| MR2                                    | #1 | FR320          | 0 - 9             | Sagamihara Plant, Central Motor Corp., LTD. |
| RAV4 2WD                               | #1 | *D20V          | 0 - 5             | Tahara Plant, Toyota Motor Corp.            |
| RAV4 4WD                               |    |                | 6 - 9             | Nagakusa Plant, Toyota Industries Corp.     |
| HIGHLANDER<br>2WD<br>HIGHLANDER<br>4WD | #1 | **21A          | 0 - 9             | Toyota Motor Kyushu, Inc.                   |
| SC430                                  | #1 | FN48Y          | 0 - 9             | Higashifuji Plant, Kanto Auto Works, LTD.   |
| ECHO                                   | #1 | *T1*3          | 0 - 9             | Takaoka Plant, Toyota Motor Corp.           |
| 4RUNNER 2WD                            | #1 | **1*R          | 0 - 7             | Tahara Plant, Toyota Motor Corp.            |
| 4RUNNER 4WD                            |    |                | 8 - 9             | Hamura Plant, Hino Motors, LTD.             |
| GX 470                                 | #1 | BT20X          | 0 - 9             | Tahara Plant, Toyota Motor Corp.            |
| LAND CRUISER<br>4WD                    | #1 | HT05J          | 2 - 3             | Honsya Plant, Toyota Motor Corp.            |
| LX470                                  | #1 | HT00W          | 3 - 4             | Honsya Plant, Toyota Motor Corp.            |

Note : Each asterisk indicates one space where a character, which is determined according to the VDS code as shown in Attachment II, will be added.

#1 added 03/13/0  
#2 revised 06/17/03

0009