



COACH, INC.

November 20, 1984

CERTIFIED: #61667

ORIGINAL

Administrator

National Highway Traffic Safety Administration
400 Seventy Street, S.W.
Washington, DC 20590

01-22-N11B-1893

Please find herein information as required per "Code of Federal Regulations, Department of Transportation, Part 571.115", (Vehicle Identification Number). Enclosed please find two each worksheets for Chance Coach Inc's SUNLINER Power Unit and Trailing Unit. These worksheets are provided to you as required per "Code of Federal Regulations, Department of Transportation, Part 571.115.S6". (Manufacturer of Motor Vehicles are to provide information to make each of the 17 characters decipherable to the Administrator of National Highway and Safety Administration).

Please advise me (316-942-7411) if the enclosed information does not meet or satisfy your requirements.

Sincerely yours,
CHANCE COACH, INC.


Mike Moody
General Manager

Enclosures: Spec Sheet, Sunliner Power Unit & Trailing Unit
Worksheets

MM/lp

2

V.I.N.
SUNLINER POWER UNIT

1	2	3		4	5	6	7	8		*		9	10	11	12	13	14	15	16
1	C	9		R	P	I	6	G				W							
8	7	6		5	4	3	2	10		0		9	8	7	6	5	4	3	2
24	21	54		45	28	3	12	70				48							

DIGITS 1 THRU 17:

- | | | |
|--|---|--|
| 1. Manufacturer - 1 (US) | 6. Body Type - 1-(Non-Enclosed w/roof) | 11. Manufacturers' Make -(Multi-Purpose) |
| 2. Manufacturer - C (Coach) | 7. Engine - 6 (6 cylinder, Gas or Propane) | Assigned by SAE |
| 3. Manufacturer of less than 500 units per year - enter "9". | 8. WEIGHT RATING - G | 12. Manufacturers' Make -(TRAM) |
| 4. Manufacturer - Line - R-(Rubber Tired Tram) | * Check Digit.* | Assigned by SAE |
| 5. Manufacturers' Series - P-(Pulling Unit) | 9. Model Year (see chart & enter year code.) | 13. Manufacturers' Type - (Pulling Unit) |
| | 10. Location of manufacturing plant- W (Wichita). | Assigned by SAE |
| | | 14, 15 & 16 - Manufacturers' Production Unit Number (i.e. 215) |

VALUE TABLE

A - 1	J - 1	T - 3
B - 2	K - 2	U - 4
C - 3	L - 3	V - 5
D - 4	M - 4	W - 6
E - 5	N - 5	X - 7
F - 6	P - 7	Y - 8
G - 7	R - 9	Z - 9
H - 8	S - 2	

YEAR CODE TABLE

1983 - D	1991 - M
1984 - E	1992 - N
1985 - F	1993 - P
1986 - B	1994 - R
1987 - H	1995 - S
1988 - J	1996 - T
1989 - K	1997 - V
1990 - L	1998 - W

*** CHECK DIGIT**

Check digit is calculated by adding all 16 reference numbers (see example right) then dividing sum by 11. **Remainder of division to be check digit.** **EXAMPLE:**
 $381 \div 11 = 34 \text{ } 7/11$
 Check digit is 7

DIGIT EXAMPLE

	11	DIGIT NUMBER
	W	CHARACTER
8	48	REFERENCE NUMBER
Reference Number = Value of Character (from table) x Multiplier		
W = 6 6 x 8 = 48		

V.I.N. SUNLINER TRAILING UNIT

1	2	3		4	5	6	7	8		*		9	10	11	12	13	14	15	16
1	C	9		P	T	2	8	2					W						
8	7	6		5	4	3	2	10		0		9	8	7	6	5	4	3	2
24	21	54		35	12	6	16	20					48						

DIGITS 1 THRU 17:

- | | | |
|--|---|--|
| <ol style="list-style-type: none"> 1. Manufacturer - 1 (US) 2. Manufacturer - C (COACH) 3. Manufacturer of less than 500 units per year - enter "9" 4. Type of Trailer P-Passenger 5. Manufacturers' Series - T-Trailing Unit | <ol style="list-style-type: none"> 6. Body Type - 2 (Non-Enclosed Trailer) W/body design same as power unit. 7. Length of Trailer - 8 (18 ft., 6 in.) 8. Axle configuration 2- (1 ea. ft. 1 ea. rear) * Check digit.* 9. Model Year (See chart & enter year code.) 10. Location of manufacturing plant - W (Wichita). | <ol style="list-style-type: none"> 11. Manufacturers' Make - (Multi-Purpose) Assigned by SAE 12. Manufacturers' Make - (TRAM) Assigned by SAE 13. Manufacturers' Type - (Trailer) Assigned by SAE 14, 15 & 16 - Manufacturers' Production Unit Number (i.e. 215) |
|--|---|--|

VALUE TABLE

A - 1	J - 1	T - 3
B - 2	K - 2	U - 4
C - 3	L - 3	V - 5
D - 4	M - 4	W - 6
E - 5	N - 5	X - 7
F - 6	P - 7	Y - 8
G - 7	R - 9	Z - 9
H - 8	S - 2	

YEAR CODE TABLE

1983 - D	1991 - M
1984 - E	1992 - N
1985 - F	1993 - P
1986 - B	1994 - R
1987 - H	1995 - S
1988 - J	1996 - T
1989 - K	1997 - V
1990 - L	1998 - W

* CHECK DIGIT

Check digit is calculated by adding all 16 reference numbers (see example right) then dividing sum by 11. **Remainder of division to be check digit.**

EXAMPLE:
 $381 \div 11 = 34 \text{ } 7/11$
 Check digit is 7

DIGIT EXAMPLE

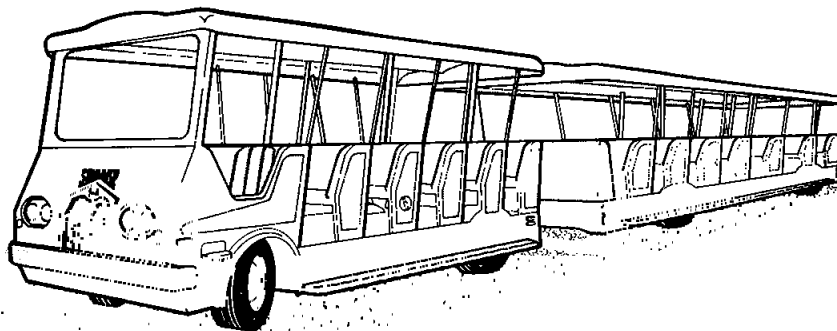
	11	DIGIT NUMBER
	W	CHARACTER
8		
48		REFERENCE NUMBER

MULTIPLIER

Reference Number = Value of Character (from table) x Multiplier W = 6 6 x 8 = 48

SPECIFICATIONS

All specifications in accordance with ASTM standards where applicable.



SUNLINER

POWER UNIT (Jeep four-wheel drive)

Steering front wheel, power assisted
Brakes four wheel, air/hydraulic;
automatic emergency system applies all
brakes if loss of air pressure occurs
Suspension multi-leaf spring
Engine 258 cu. in., 6-cylinder
Engine horsepower rating .. 123 @ 3600 rpm (max.)
78 @ 2000 rpm
Engine torque rating .. 210 lb. ft. @ 2400 rpm (max.)
207 lb. ft. @ 2000 rpm
Fuel gasoline standard, propane optional
Transmission 3-speed automatic
Tire size 9.50 x 16.5 (D) rated
Curb weight 5,600 lb.
G.V.W.R. (maximum at 18 mph) 9,100 lb.
Turning radius (outside body) 25 ft. 8 in.
Passenger capacity 21 adults

TRAILING COACH

Steering articulated four-wheel steering
Brakes four-wheel air/hydraulic;
automatic emergency system applies all
brakes if loss of air pressure occurs
Suspension multi-leaf spring
Tire size 9.50 x 16.5 (D) rated
Curb weight 4,000 lb.
G.V.W.R. (maximum at 18 mph) 8,700 lb.
Turning radius (outside body) 25 ft. 8 in.
Passenger capacity 28 adults

OPTIONS

PUBLIC ADDRESS SYSTEM:

Mobilpage PA, amp and 3 weather-proof speakers installed in power unit, and/or 3 speakers in each coach.

ENTERTAINMENT CENTER:

Mobilpage Audio Entertainment Center consisting of public address system. AM/FM 8-track system.

PROPANE FUEL SYSTEM:

23.9 gallon capacity, meets all Federal and State regulations for automotive propane fuel specifications.

WHEELCHAIR ACCESSIBILITY:

Power unit only. Wheelchair ramp on right side of vehicle with locks and tie-downs for two wheelchair passengers.

RAIN CURTAIN KIT:

Sliding vinyl curtains with clear vinyl window inserts on power unit and coaches allow use in inclement weather.

GEARING FOR STEEP GRADES:

Used in special applications where grades exceed 10%. **NOTE:** Consult Chance Mfg. before final specifications for purchase are completed.

CONDUCTOR'S SEAT:

Fully adjustable, cushioned seat at rear or last trailing coach for passenger control and safety. Separate PA controls are provided at conductor's seat.

STEP LIGHTS:

Installed at each seat end to illuminate steps during night time operation.

STROBE WARNING LIGHT:

Rotating amber beacon installed on the roof at the rear of the last trailing coach. (Standard on power unit, Optional on coach.)

CHIME SIGNAL SYSTEM:

Provides passengers with a means of signaling driver.

SPECIAL PAINT:

Special effects paint schemes, logo design and lettering upon request. **NOTE:** Consult Chance Mfg. before final specifications for purchase are completed.

Because we try to improve every Chance product, these specifications are subject to change without notice.

The most complete line of amusement rides for all ages.



4219 Irving
P.O. Box 12328
Wichita, KS 67277-2328

Telephone (316) 942-7411

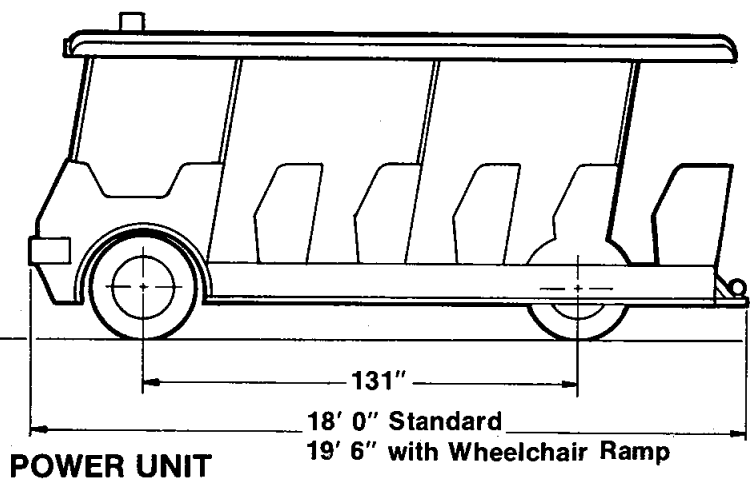
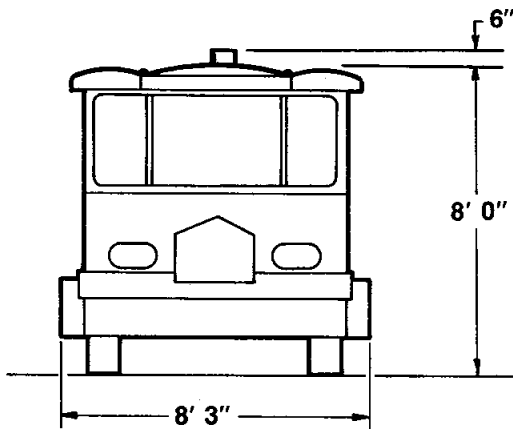
PASSENGER CAPACITY & GRADE CHART

Grade and Road Conditions	21 ADULTS Power Unit Only Overall length — 18 ft.**			49 ADULTS Power Unit & One Coach Overall length — 37 ft. 11 1/4 in.**			77 ADULTS Power Unit & Two Coaches Overall length — 59 ft. 7 1/2 in.**		
	RISE PER 100 FT. % Grade	ANGLE	SPEED MPH	RISE PER 100 FT. % Grade	ANGLE	SPEED MPH	RISE PER 100 FT. % Grade	ANGLE	SPEED MPH
500 ft. Grade Dry Concrete	20*	11°	7	20*	11°	3.5	20*	11°	1.5
Continuous Grade Wet or Dry Average Road	15*	9°	12	15*	9°	6	15*	9°	4
	10*	6°	16	10*	6°	12	10*	6°	6
	5	3°	19	5	3°	17	5	3°	12

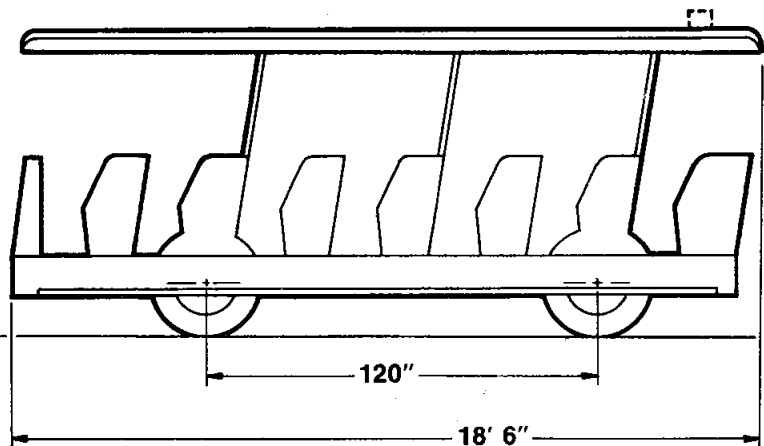
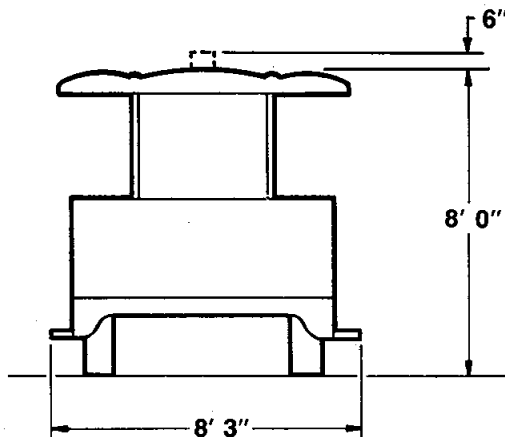
Downgrades in excess of 8% or 4.5° must be negotiated in low gear.

*For use on grades over 10%. Consult Change Mfg. for correct axle ratios.

**Add 1 ft. 6 in. if equipped with wheelchair ramp.



POWER UNIT



COACH