

13 9/7/90 pdg

TOYOTA MOTOR CORPORATE SERVICES OF NORTH AMERICA, INC.

WASHINGTON OFFICE
1850 M STREET, N.W., WASHINGTON, D.C. 20036

TEL: (202) 775-1707
FAX: (202) 463-8513

ORIGINAL

July 27, 1990

01-22-N11B-3801

30 SEP 14 13:40

RECEIVED
NHTSA DOCKET

General Jerry Ralph Curry
Administrator
National Highway Traffic Safety Administration
400 Seventh Street, S.W.
Washington, D.C. 20590

19 pp

Attention: VIN Coordinator

RE: VIN Coding System on 1991 Toyota and Lexus Vehicles

Dear General Curry:

Pursuant to 49 CFR Part 565, "Vehicle Identification Number Content Requirements," on behalf of Toyota Motor Corporation we hereby submit the information on the Toyota and Lexus Vehicle Identification Number Coding Systems applicable to the 1991 model year.

Please note that the VIN Coding systems are also enclosed for the Corolla model (which is assembled by New United Motor Manufacturing, Inc. and Toyota Motor Manufacturing Canada) and the Camry model (which is assembled by Toyota Motor Manufacturing U.S.A.). Both models are marketed by Toyota.

We trust this information will be satisfactory.

Sincerely,

TOYOTA MOTOR CORPORATE SERVICES
OF NORTH AMERICA, INC.

Teiji Iida
Teiji Iida
Vice President

TI:cc
Enclosure

Rec'd
NOA-01 7/30/90

TOYOTA AND LEXUS VEHICLE IDENTIFICATION NUMBER

CODING SYSTEM

APPLICABLE TO 1991 MODELS

Supplement to
"TOYOTA and LEXUS vehicle Identification Number Coding system
Applicable to 1991 Models"
(Dated April 1990)

This information includes
the following new models;

TOYOTA Tercel	TOYOTA Land Cruiser
TOYOTA Corolla	TOYOTA Previa
TOYOTA Celica	TOYOTA Truck
TOYOTA MR2	LEXUS LS400
TOYOTA Supra	LEXUS ES250
TOYOTA Camry	
TOYOTA Cressida	

July 1990

TABLE OF CONTENTS

revirsed 7/9/90

<u>Content</u>	<u>Page</u>
TOYOTA 'VIN' Coding System	1
Attachment I (1st section)	2
Attachment II (2nd section)	3
Attachment III (3rd section)	9

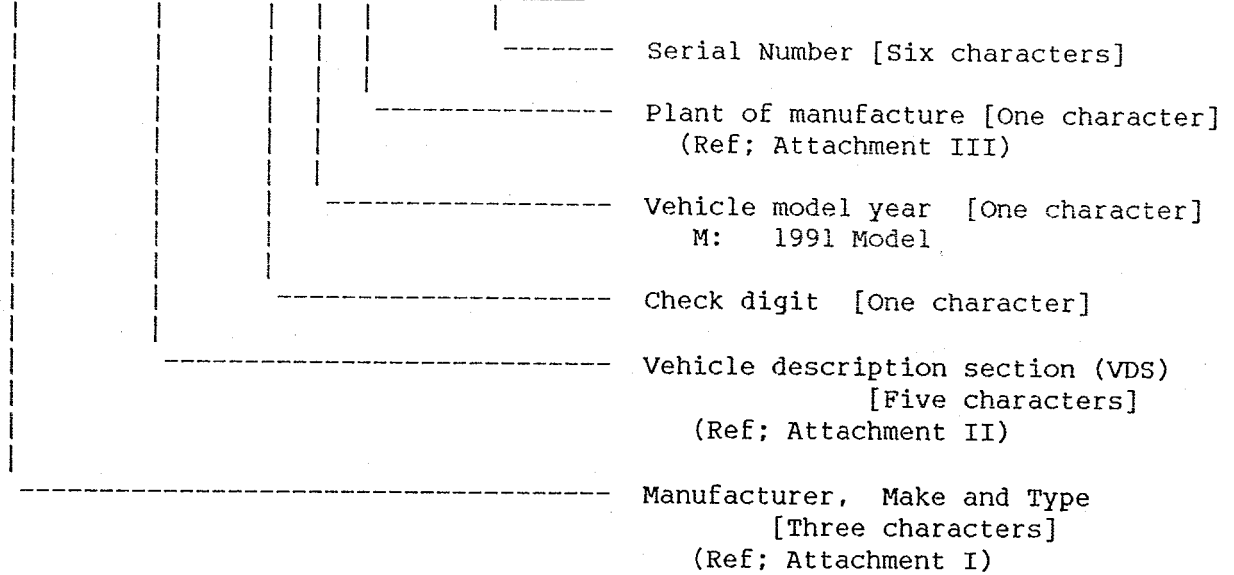
(Abbreviations)

C	Coupe
DR	Door
GVWR	Gross Vehicle Weight Rating
HT #1	Hardtop
IFS #1	Independent Front Suspension
IRS #1	Independent Rear Suspension
LB #1	Liftback
SDN #1	Sedan
VDS	Vehicle Description Section
w/	With
WGN	Station Wagon
2WD	Two Wheel Drive
4WD	Four Wheel Drive

#1 added 7/9/90

TOYOTA AND LEXUS "Vehicle Identification Number" Coding System (1991 Model)

Example: J T 3 R N 2 7 V 0 M 0 0 0 0 0 0 1



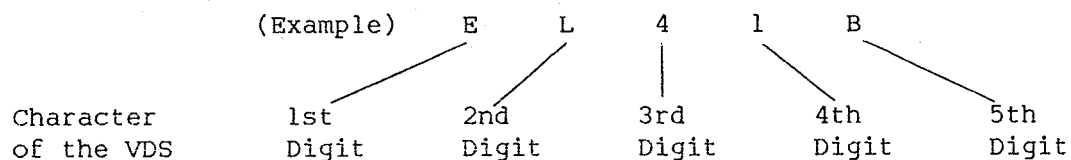
✓

revised 7/9/90

TOYOTA AND LEXUS 1991 MODEL
MANUFACTURER, MAKE, & TYPE CODE

Code	Manufacturer	Make	Type
JT2	Toyota	Toyota	Passenger Car
JT3	Toyota	Toyota	Multipurpose Passenger Vehicle
JT4 #1	Toyota	Toyota	Truck
JT5	Toyota	Toyota	Incomplete Vehicle
JT8 #1	Toyota	Lexus	Passenger Car

#1 added 7/9/90

TOYOTA AND LEXUS 1991 Model VDS CodeI Passenger Car

Vehicle Name	Engine Type	Line	Model Designation	Series (Grade)	Body Type & Restraint System Type
LS400 #1	U 1UZ-FE	F LS400	1 UCF10L	1 ----	E 4DR SDN W/Manual Belt and Air Bag
ES250 #1	V 2VZ-FE	V ES250	2 VZV21L	2 ----	T 4DR HT W/Manual Belt #1 and Air Bag
Tercel #1	E 3E-E	L Tercel	4 EL42L	3 STD 4 DLX 6 Base	B 2DR SDN W/Automatic Belt A 4DR SDN W/Automatic Belt
#1,#2 Corolla	A 4A-FE 4A-GE	E Corolla	9 AE92L AE95L	1 STD 4 DLX 6 SR5 7 LE 8 GT-S	J 2DR CP 2WD W/Automatic Belt A 4DR SDN 2WD W/Automatic Belt V 5DR WGN 4WD W/Automatic Belt K 5DR WGN 2WD W/Automatic Belt
#1,#3 Celica	A 4A-FE S 3S-GTE 5S-FE	T Celica	8 AT180L ST184L ST185L	5 GT-S 6 ST 7 GT 8 turbo All-Trac	F 2DR CP 2WD W/Manual Belt and Air Bag N 3DR LB 2WD W/Manual Belt and Air Bag P 3DR LB 4WD W/Manual Belt and Air Bag
MR2 #4	S 3S-GTE 5S-FE	W MR2	2 SW20L SW21L	1 Base 2 Base	M 2DR CP W/Manual Belt and air bag N 2DR CP W/Sport Roof, Manual Bert and air bag

#1 added 7/9/90

6

added 7/9/90

Vehicle Name	Engine Type		Line		Model Designation		Series (Grade)		Body Type & Restraint System Type	
Supra #5	M	7M-GE	A	Supra	7	MA70L	0	GT	N	3DR LB W/Sport Roof, Manual Belt and Air Bag
		7M-GTE					1	GT	M	3DR LB W/Manual Belt and Air Bag
Camry	S V	3S-FE 2VZ-FE	V	Camry	2	SV21L SV21LG SV25L VZV21L VZV21LG	1	DLX	E	4DR SDN 2WD W/Automatic Belt
							2	LE	J	4DR SDN 4WD W/Automatic Belt
							4	Base	W	5DR WGN 2WD W/Automatic Belt
Cressida	M	7M-GE	X	Cressida	8	MX83L	3	GLX W/IRS	E	4DR SDN W/Automatic Belt

Note: #2 : As for Corolla, engine types are identified as follows:

Engine Type	VDS	1st Digit	4th Digit
4A-GE		A	8
4A-FE		A	1,4,6 or 7

(CONTINUED)

#1
Note: #3 : As for Celica, engine types are identified as follows:

Engine Type VDS	1st Digit	4th Digit
3S-GTE	S	8
5S-FE	S	5 or 7

Note: #4 : As for MR2, engine types are identified as follows:

Engine Type VDS	1st Digit	4th Digit
3S-GTE	S	2
5S-FE	S	1

#1
Note: #5 : As for Supra, engine types are identified as follows:

Engine Type VDS	1st Digit	4th Digit
7M-GE	M	0
7M-GTE	M	1

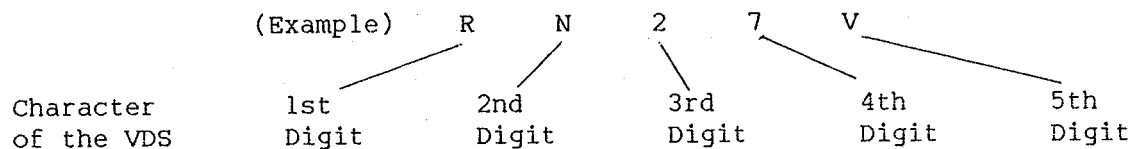
#1 added 7/9/90

(CONTINUED)

8

II Multipurpose Passenger Vehicle

revised 7/9/90



Vehicle Name	Engine Type		Line		Model Designation	Series (Grade)		Body Type					
					GVWR								
4-Runner #1	R	22R-E	N	Truck	2	RN120L	7	SR5	V	4DR WGN 2WD			
	V	3VZ-E					9	SR5 V6	W	4DR WGN 4WD			
					3	RN130L			J	2DR WGN 4WD			
						VZN130L							
	GVWR (3rd, 4th & 5th Digits)												
	27V ----- 5350 lb (Class D)												
	29V ----- 5350 lb (Class D)												
	37J ----- 5350 lb (Class D)												
	37W ----- 5350 lb (Class D)												
	39J ----- 5350 lb (Class D)												
39W ----- 5350 lb (Class D)													
Land Cruiser	F	3F-E	J	Land Cruiser	8	FJ80L	0	GX	W	WGN			
	GVWR (3rd, 4th & 5th Digits)												
	80W ----- 6525 lb (Class E)												
Previa	A	2TZ-FE	C	Previa	1	TCR10L	1	DLX	R	4DR WGN 2WD			
					2	TCR20L	2	LE	S	4DR WGN 4WD			
					GVWR (3rd, 4th & 5th Digits)								
					11R ----- 5215 lb (Class D)								
					12R ----- 5215 lb (Class D)								
					21S ----- 5215 lb (Class D)								
					22S ----- 5215 lb (Class D)								

#1 added 7/9/90

(CONTINUED)

(Example)

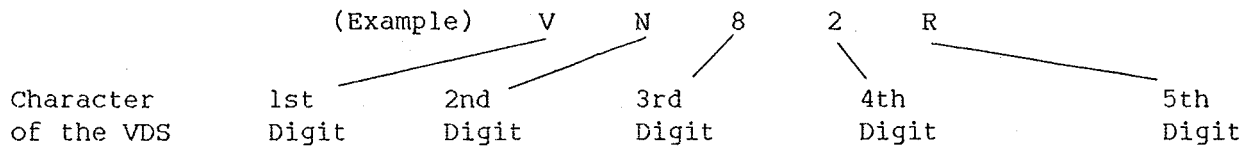
1st Digit 2nd Digit 3rd Digit 4th Digit 5th Digit

(CONTINUED)

18

revised 7/9/90

IV Incomplete Vehicle



Vehicle Name	Engine Type	Line	Drive Train Type	Cab Type & Chassis	Series & Brake Systems
#1 cab Chassis	V 3VZ-E	N Truck	8 9 4 x 2	2 2DR Pickup/ Long Wheelbase, W/IFS 4 2DR Pickup/ Super Long Wheelbase, W/IFS	T STD/ Hydraulic Double Tyre

Vehicle Name	Engine Type	Line	Drive Train Type	Series (Grade)	Cab Type & Brake Systems
Celica	S 5S-FE	T Celica	8 4 x 2	7 GT	K Convertible/ Hydraulic

added 7/9/90

(CONTINUED)

//

revised 7/9/90

TOYOTA 1991 MODEL MANUFACTURING PLANT CODE

Vehicle Name	Applicable VDS	Code(11th Digit)	Plant of Manufacture
LS400 #1	UF11E	0 - 9	Tahara Plant, Toyota Motor Corp.
ES250 #1	VV22T	0 - 9	Tsutsumi Plant, Toyota Motor Corp.
Tercel #1	EL4**	0 - 9	Takaoka Plant, Toyota Motor Corp.
Corolla #1	AE9*J AE9*A AE9*K	0 - 4	Takaoka Plant, Toyota Motor Corp.
	AE9*V	3	Nagakusa Plant, Toyoda Automatic Loom Works, LTD.
Celica #1	AT8** ST8**	0 - 9	Tahara Plant, Toyota Motor Corp.
MR2	SW2**	0 - 9	Sagamihara Plant, Central Motor Co., LTD.
Supra #1	MA7**	0 - 9	Tahara Plant, Toyota Motor Corp.
Camry #1	SV2*E SV2*W	0 - 8	Tsutsumi Plant, Toyota Motor Corp.
	SV2*J VV2**	0 - 9	
Cressida #1	MX83E	0 - 4	Motomachi Plant, Toyota Motor Corp.
4-Runner #1	RN2** VN2**	0 - 9	Tahara Plant, Toyota Motor Corp.
	RN3**	0 - 6	
	VN3**	0 - 6 ,8	

#1 added 7/9/90

(CONTINUED)

revised 7/9/90

Vehicle Name	Applicable VDS	Code(11th Digit)	Plant of Manufacture
Truck #1	RN81* VN82* VN93* VN13*	0 - 4	Tahara Plant, Toyota Motor Corp.
		5 - 9	Hamura plant, Hino Motor Co., LTD.
	RN82* RN93*	0 - 4	Tahara Plant, Toyota Motor Corp.
		5 - 8	Hamura Plant, Hino Motor Co., LTD.
	RN01*	0 - 6	Tahara Plant, Toyota Motor Corp.
		7 - 9	Hamura Plant, Hino Motor Co., LTD.
	RN02*	0 - 6	Tahara Plant, Toyota Motor Corp.
		7 - 8	Hamura Plant, Hino Motor Co., LTD.
	RN13*	0 - 5	Tahara Plant, Toyota Motor Corp.
		6 - 7	Hamura Plant, Hino Motor Co., LTD.
	VN01* VN02*	0 - 1 6 - 9	Tahara Plant, Toyota Motor Corp.
		2 - 5	Hamura Plant, Hino Motor Co., LTD.
Land Cruiser	FJ80W	0 - 6	Honsha Plant, Toyota Motor Corp.
Previa	AC1** AC2**	0 - 9	Fujimatsu Plant, Toyota Auto Body Co., LTD.
Cab chassis #1	VN82*	0 - 4	Tahara Plant, Toyota Motor Corp.
		5 - 9	Hamura Plant, Hino Motor Co., LTD.
	VN94*	0 - 9	Tahara Plant, Toyota Motor Corp.

#1 added 7/9/90

Note: Each asterisk indicates one space where a character, (which is determined according to the VDS code as shown in Attachment II), will be added.

TOYOTA COROLLA VEHICLE IDENTIFICATION NUMBER

CODING SYSTEM

APPLICABLE TO 1991 MODELS

[Manufactured by NUMMI]
[Manufactured by TMMC]

July 1990

TOYOTA COROLLA "Vehicle Identification Number" Coding system

(1991 Models)

Example

	Section 1	Section 2	Check Digit	Section 3
Digit	1 2 3	4 5 6 7 8	9	10 11 12 13 14 15 16 17
Example	1 N X	A E 9 1 A	8	M Z 0 0 0 0 0 1

Section 1 : Manufacturer, Make and Type

	Code	Manufacturer	Make	Type
1st - 3rd Digits	1NX	New United Motor * Manufacturing, Inc., CA, U.S.A.	Toyota	Passenger Car
	2T1	Toyota Motor ** Manufacturing, Canada	Toyota	Passenger Car

* Vehicles are assembled by New United Motor Manufacturing Inc., CA, U.S.A. but marketed by Toyota.

** Vehicles are assembled by Toyota Motor Manufacturing Canada but marketed by Toyota.

Section 2 : Vehicle description section (VDS)

		Code	Description
4th Digit	Engine Type	A	4A-FE
5th Digit	Line	E	Corolla
6th Digit	Model Designation	9	AE92L
7th Digit	Series (Grade)	1 4 7	STD DLX LE
8th Digit	Body Type & Restraint System	A	4 Door Sedan with Automatic Belt

(CONTINUED)

Section 3 : Vehicle model year, Plant of manufacture
and Sequential Number

		Code	Description
10th Digit	Vehicle Model Year	M	1991 Model
11th Digit	Plant of Manufacture	Z C	Fremont (CA) Canada
12th - 17th Digits	Sequential Number	000001 thru 999999	-----

TOYOTA CAMRY VEHICLE IDENTIFICATION NUMBER

CODING SYSTEM

APPLICABLE TO 1991 MODELS

[Manufactured by TMM]

July 1990

TOYOTA CAMRY "Vehicle Identification Number" Coding system

(1991 Models)

Example

	Section 1	Section 2	Check Digit	Section 3
Digit	1 2 3	4 5 6 7 8	9	10 11 12 13 14 15 16 17
Example	4 T 1	S V 2 1 E	X	M U 0 0 0 0 0 1

Section 1 : Manufacturer, Make and Type

	Code	Manufacturer *	Make	Type
1st - 3rd Digits	4T1	Toyota Motor Manufacturing, U.S.A.	Toyota	Passenger Car

* Vehicles are assembled by Toyota Motor Manufacturing U.S.A. but marketed by Toyota.

Section 2 : Vehicle description section (VDS)

		Code	Description
4th Digit	Engine Type	S V	3S-FE 2VZ-FE
5th Digit	Line	V	Camry
6th Digit	Model Designation	2	SV21L VZV21L
7th Digit	Series (Grade)	1 2 4	DLX LE BASE
8th Digit	Body Type & Restraint System	E	4 Door Sedan with Automatic Belt

(CONTINUED)

Section 3 : Vehicle model year, Plant of manufacture
and Sequential Number

		Code	Description
10th Digit	Vehicle Model Year	M	1991 Model
11th Digit	Plant of Manufacture	U	Kentucky
12th - 17th Digits	Sequential Number	000001 thru 999999	-----