



January 29, 2009

David Kelly  
Acting Administrator  
National Highway Traffic Safety Administration  
1200 New Jersey Avenue, SE/W42-308  
Washington, D.C. 20590  
Attention: VIN Coordinator

**Subject: 2010 Model Year Vehicle Identification Number Codes – Jaguar and Land Rover Vehicles - Revision #1**

**Reference: 2010 Model Year Vehicle Identification Number Codes – Jaguar and Land Rover Vehicles (Submitted by Ford Motor Company on behalf of Jaguar Land Rover North America).**

Pursuant to the requirements set forth in Part 565 of Title 49 of the Code of Federal Regulations, Vehicle Identification Number (VIN) Requirements, Jaguar Land Rover North America (JLRNA) is submitting 2010 model year VIN code information for Jaguar and Land Rover vehicles. JLRNA is also including copies of all previously submitted 2010 model year VIN information not affected by this update. This package supersedes the October 15, 2008, submission.

Sincerely,

p.p. Gary Temple  
President, Jaguar Land Rover North America

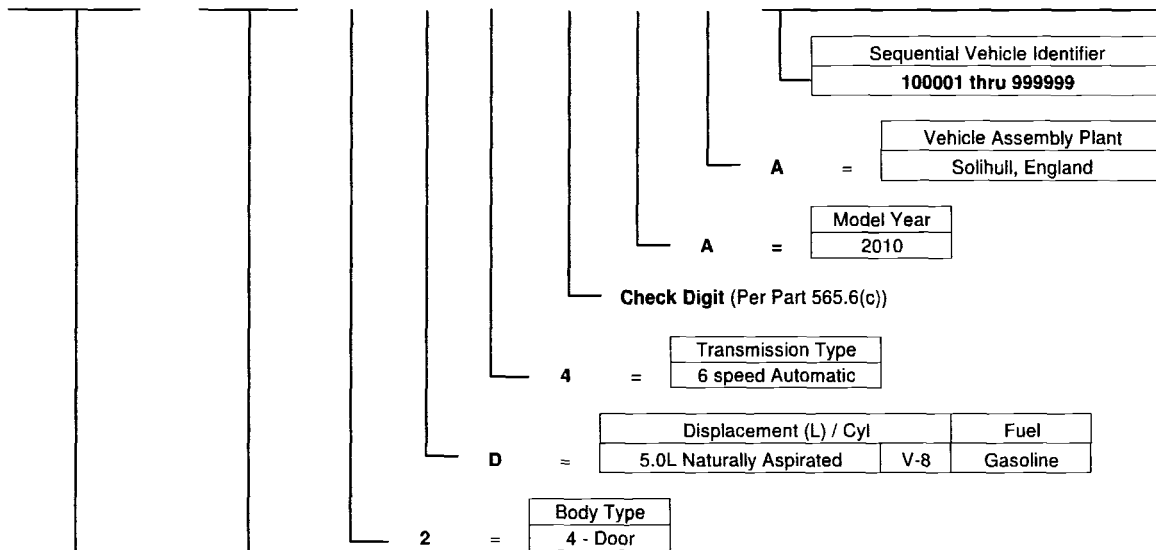
Attachment

# 2010 Land Rover LR4

January 30, 2009

World Manufacturer Identifier (WMI)			Make, Line, Model, GVWR, Restraints		Body Type	Engine Type - Displacement, Cylinders	Transmission Type	VIN Check Digit (0-9 or X)	Vehicle Model Year	Plant of Manufacture	Numerical Sequence Vehicle Identifier					
1	2	3	4	5	6	7	8	9	10	11	12	13	14	15	16	17

S	A	L	A	?	2	D	4	?	A	A	?	?	?	?	?	?
---	---	---	---	---	---	---	---	---	---	---	---	---	---	---	---	---



		Make	Line	Trim Level	GVWR		Restraint Description
					Class	Range	
B	=	Land Rover	LR4	S / LR4 Base (5 seat)	F	7,001 - 8,000 lbs.	Manual belts with driver and passenger frontal air bags and side inflatable restraint (1st & 2nd row)
C	=	Land Rover	LR4	S / LR4 Base (7 seat)	F	7,001 - 8,000 lbs.	Manual belts with driver and passenger frontal air bags and side inflatable restraint (1st & 2nd & 3rd row)
D	=	Land Rover	LR4	SE (5 seat)	F	7,001 - 8,000 lbs.	Manual belts with driver and passenger frontal air bags and side inflatable restraint (1st & 2nd row)
E	=	Land Rover	LR4	SE (7 seat)	F	7,001 - 8,000 lbs.	Manual belts with driver and passenger frontal air bags and side inflatable restraint (1st & 2nd & 3rd row)
F	=	Land Rover	LR4	HSE (5 seat)	F	7,001 - 8,000 lbs.	Manual belts with driver and passenger frontal air bags and side inflatable restraint (1st & 2nd row)
G	=	Land Rover	LR4	HSE (7 seat)	F	7,001 - 8,000 lbs.	Manual belts with driver and passenger frontal air bags and side inflatable restraint (1st & 2nd & 3rd row)
H	=	Land Rover	LR4	HSE Lux (5 seat)	F	7,001 - 8,000 lbs.	Manual belts with driver and passenger frontal air bags and side inflatable restraint (1st & 2nd row)
K	=	Land Rover	LR4	HSE Lux (7 seat)	F	7,001 - 8,000 lbs.	Manual belts with driver and passenger frontal air bags and side inflatable restraint (1st & 2nd & 3rd row)
L	=	Land Rover	LR4	HSE Plus (5 seat)	F	7,001 - 8,000 lbs.	Manual belts with driver and passenger frontal air bags and side inflatable restraint (1st & 2nd row)
M	=	Land Rover	LR4	HSE Plus (7 seat)	F	7,001 - 8,000 lbs.	Manual belts with driver and passenger frontal air bags and side inflatable restraint (1st & 2nd & 3rd row)

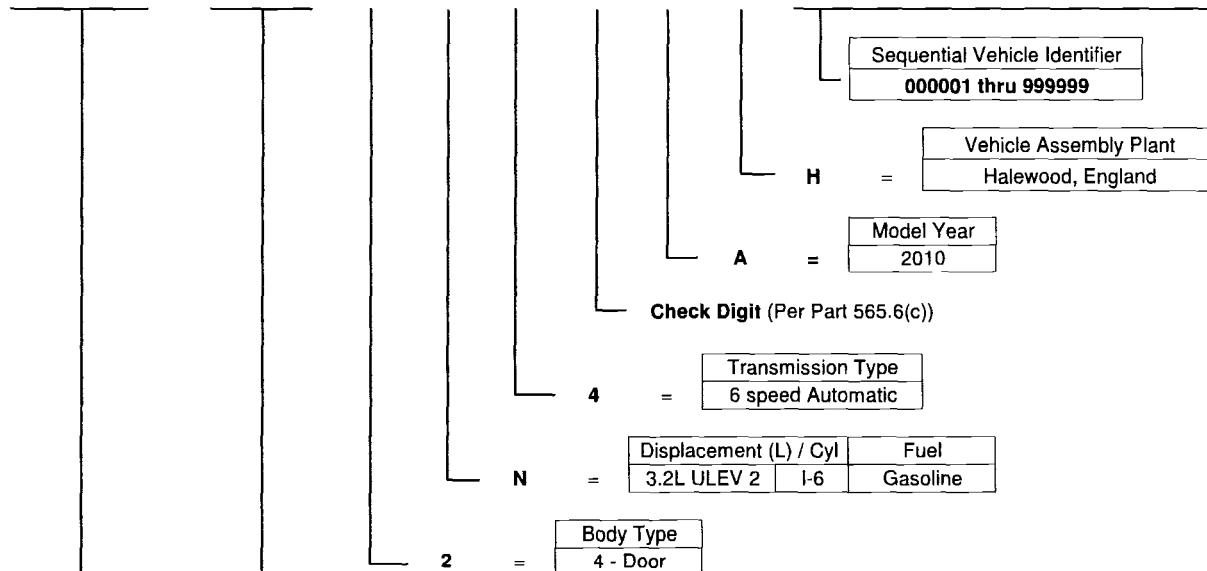
SAL	=	Manufacturer	Type
		Land Rover, UK	Multipurpose Passenger Vehicle

# 2010 Land Rover LR2

October 15, 2008

World Manufacturer Identifier (WMI)			Make, Line, Model, GVWR, Restraints		Body Type	Engine Type - Displacement, Cylinders	Transmission Type	VIN Check Digit (0-9 or X)	Vehicle Model Year	Plant of Manufacture	Numerical Sequence Vehicle Identifier					
1	2	3	4	5	6	7	8	9	10	11	12	13	14	15	16	17

S	A	L	F	?	2	N	4	?	A	H	?	?	?	?	?	?
---	---	---	---	---	---	---	---	---	---	---	---	---	---	---	---	---



	Make	Line	Trim Level	GVWR		Restraint Description
				Class	Range	
P =	Land Rover	LR2	SE	D	5,001 - 6,000 lbs	Manual belts with driver and passenger frontal air bags and side inflatable restraint (1st & 2nd row) and driver knee air bag
R =	Land Rover	LR2	HSE	D	5,001 - 6,000 lbs	Manual belts with driver and passenger frontal air bags and side inflatable restraint (1st & 2nd row) and driver knee air bag
S =	Land Rover	LR2	SE w/ Tech Pack	D	5,001 - 6,000 lbs	Manual belts with driver and passenger frontal air bags and side inflatable restraint (1st & 2nd row) and driver knee air bag
T =	Land Rover	LR2	HSE w/ Tech Pack	D	5,001 - 6,000 lbs	Manual belts with driver and passenger frontal air bags and side inflatable restraint (1st & 2nd row) and driver knee air bag

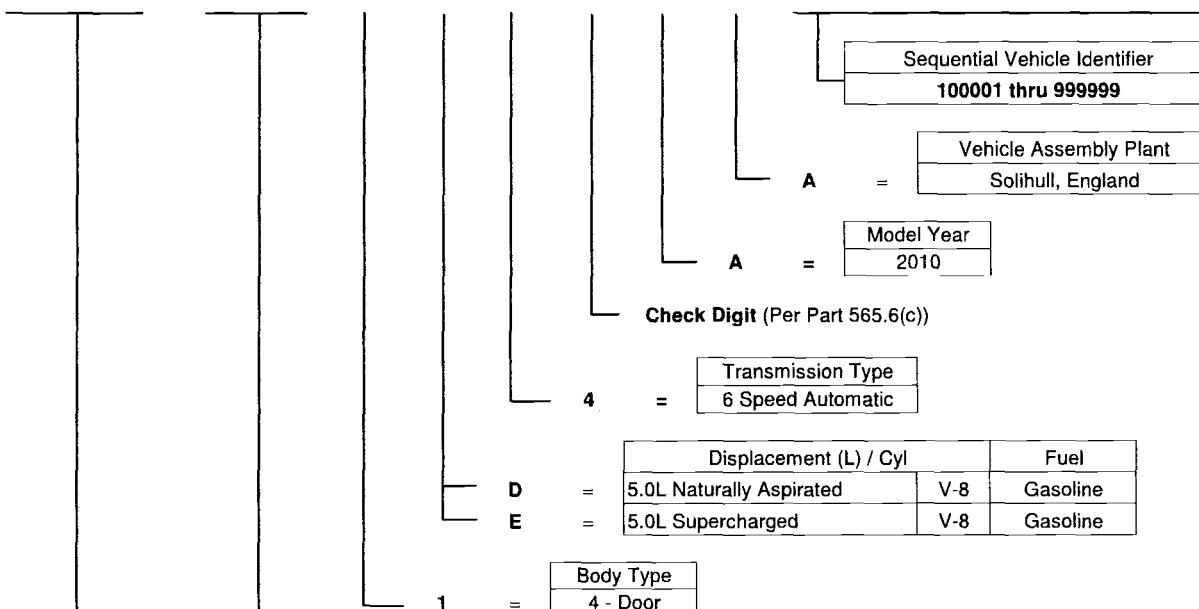
SAL =	Manufacturer	Type
	Land Rover, UK	Multipurpose Passenger Vehicle

# 2010 Range Rover

October 15, 2008

World Manufacturer Identifier (WMI)			Make, Line, Model, GVWR, Restraints		Body Type	Engine Type - Displacement, Cylinders	Transmission Type	VIN Check Digit (0-9 or X)	Vehicle Model Year	Plant of Manufacture	Numerical Sequence Vehicle Identifier					
1	2	3	4	5	6	7	8	9	10	11	12	13	14	15	16	17

S	A	L	M	?	1	?	4	?	A	A	?	?	?	?	?	?
---	---	---	---	---	---	---	---	---	---	---	---	---	---	---	---	---



	Make	Line	Trim Level	GVWR		Restraint Description
				Class	Range	
E =	Land Rover	Range Rover	HSE	E	6,001 - 7,000 lbs	Manual belts with driver and passenger frontal air bags and side inflatable restraint (1st & 2nd row) and driver knee air bag
F =	Land Rover	Range Rover	HSE w/ Luxury Pack	E	6,001 - 7,000 lbs	Manual belts with driver and passenger frontal air bags and side inflatable restraint (1st & 2nd row) and driver knee air bag
H =	Land Rover	Range Rover	Westminster	E	6,001 - 7,000 lbs	Manual belts with driver and passenger frontal air bags and side inflatable restraint (1st & 2nd row) and driver knee air bag
P =	Land Rover	Range Rover	Autobiography	E	6,001 - 7,000 lbs	Manual belts with driver and passenger frontal air bags and side inflatable restraint (1st & 2nd row) and driver knee air bag

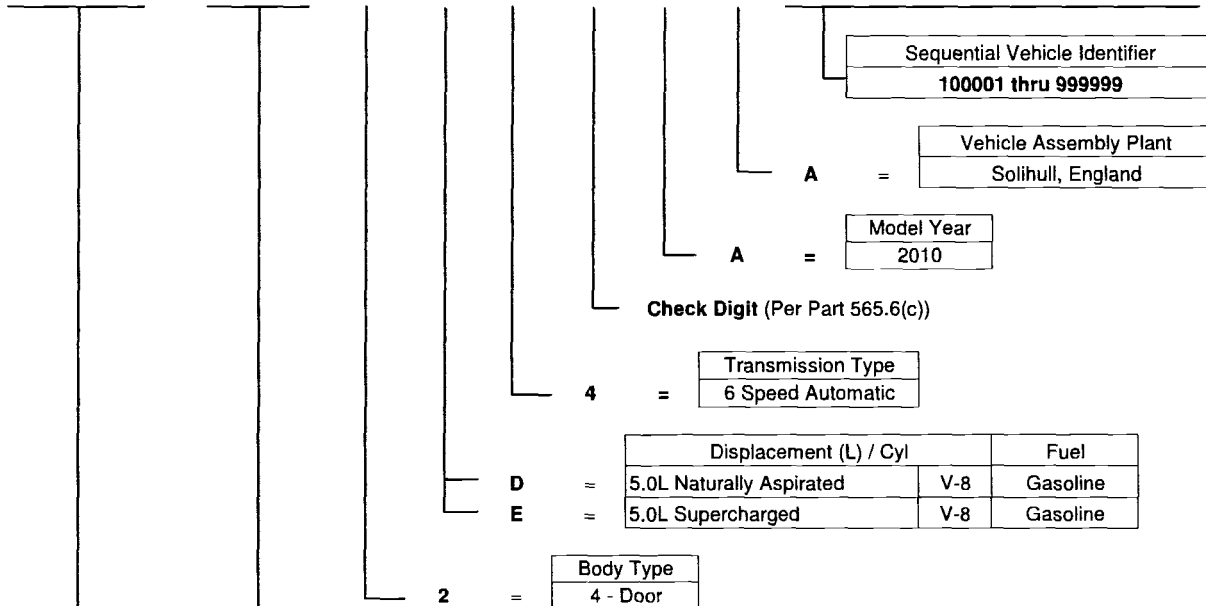
SAL =	Manufacturer	Type
	Land Rover, UK	Multipurpose Passenger Vehicle

# 2010 Range Rover Sport

October 15, 2008

World Manufacturer Identifier (WMI)			Make, Line, Model, GVWR, Restraints		Body Type	Engine Type - Displacement, Cylinders	Transmission Type	VIN Check Digit (0-9 or X)	Vehicle Model Year	Plant of Manufacture	Numerical Sequence Vehicle Identifier					
1	2	3	4	5	6	7	8	9	10	11	12	13	14	15	16	17

S	A	L	S	?	2	?	4	?	A	A	?	?	?	?	?	?
---	---	---	---	---	---	---	---	---	---	---	---	---	---	---	---	---



	Make	Line	Trim Level	GVWR		Restraint Description
				Class	Range	
D =	Land Rover	Range Rover Sport	SE	E	6,001 - 7,000 lbs	Manual belts with driver and passenger frontal air bags and side inflatable restraint (1st & 2nd row)
F =	Land Rover	Range Rover Sport	HSE	E	6,001 - 7,000 lbs	Manual belts with driver and passenger frontal air bags and side inflatable restraint (1st & 2nd row)
H =	Land Rover	Range Rover Sport	SC	E	6,001 - 7,000 lbs	Manual belts with driver and passenger frontal air bags and side inflatable restraint (1st & 2nd row)
K =	Land Rover	Range Rover Sport	LUX	E	6,001 - 7,000 lbs	Manual belts with driver and passenger frontal air bags and side inflatable restraint (1st & 2nd row)

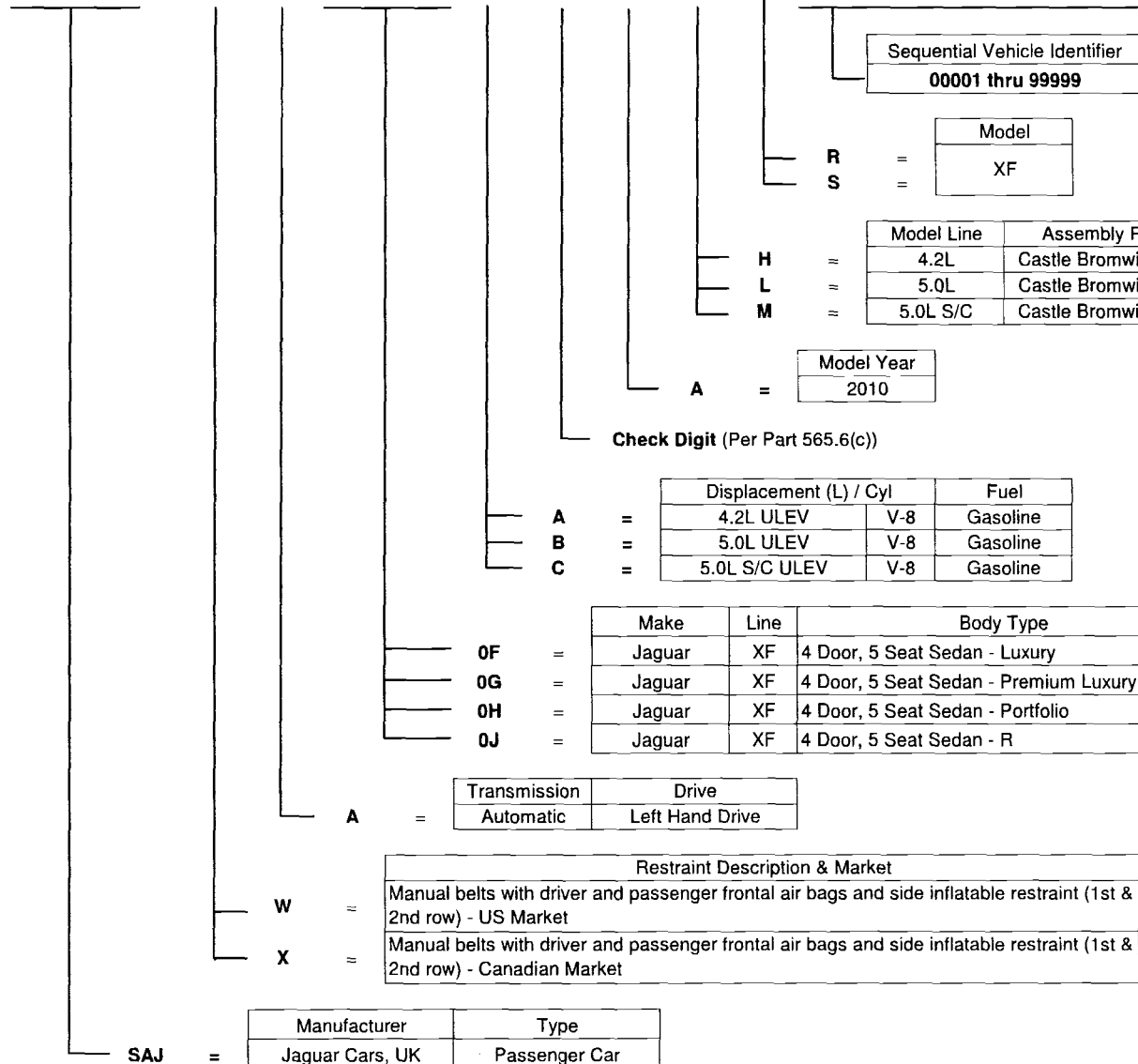
SAL =	Manufacturer	Type
	Land Rover, UK	Multipurpose Passenger Vehicle

# 2010 Jaguar XF

October 15, 2008

World Manufacturer Identifier (WMI)			Restraint Description Market	Transmission / Drive	Make, Car Line, Body Type		Engine Displacement, Cylinders, Fuel Type	VIN Check Digit (0-9 or X)	Vehicle Model Year	Model Line Plant of Manufacture	Model	Numerical Sequence Vehicle Identifier				
1	2	3	4	5	6	7	8	9	10	11	12	13	14	15	16	17

S	A	J	?	A	0	?	?	?	A	?	?	?	?	?	?	?
---	---	---	---	---	---	---	---	---	---	---	---	---	---	---	---	---



October 15, 2008

World Manufacturer Identifier (WMI)			Restraint Description Market	Transmission / Drive	Make, Car Line, Body Type	Engine Displacement, Cylinders, Fuel Type	VIN Check Digit (0-9 or X)	Vehicle Model Year	Model Line Plant of Manufacture	Model	Numerical Sequence Vehicle Identifier					
1	2	3	4	5	6	7	8	9	10	11	12	13	14	15	16	17

S	A	J	?	A	4	?	?	?	A	?	B	?	?	?	?	?
---	---	---	---	---	---	---	---	---	---	---	---	---	---	---	---	---

Sequential Vehicle Identifier
<b>10001 thru 99999</b>

Model
XK

Model Line	Assembly Plant
5.0L	Castle Bromwich, UK
5.0L S/C	Castle Bromwich, UK

Model Year
2010

**Check Digit (Per Part 565.6(c))**

		Displacement (L) / Cyl		Fuel
<b>B</b>	=	5.0L ULEV	V-8	Gasoline
<b>C</b>	=	5.0L S/C ULEV	V-8	Gasoline

		Make	Line	Body Type
<b>4D</b>	=	Jaguar	XKR	Coupe
<b>4E</b>	=	Jaguar	XKR	Convertible
<b>4F</b>	=	Jaguar	XKR Portfolio	Coupe
<b>4G</b>	=	Jaguar	XKR Portfolio	Convertible

A	=	Transmission	Drive
		Automatic	Left Hand Drive

		Passenger Car Restraint System
W	=	Manual belts with driver and passenger frontal air bags and side inflatable restraint (1st row) - US Market
X	=	Manual belts with driver and passenger frontal air bags and side inflatable restraint (1st row) - Canadian Market

	Manufacturer	Type
<b>SAJ</b> =	Jaguar Cars, UK	Passenger Car