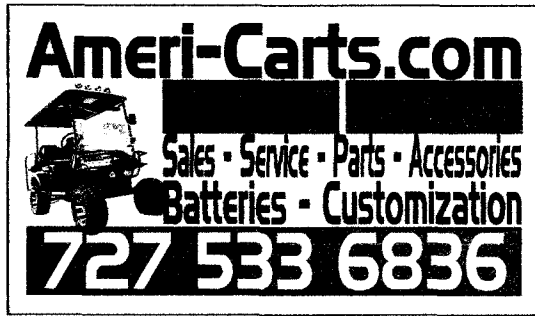


ORG 8120



9/15/12

America's, Inc.
d/b/a Ameri-Carts
1071 Donegan Road, Suite 1527
Largo, FL 33771

Phone: 727-533-6836

Administrator
National Highway Traffic Safety Administration
1200 New Jersey Avenue, SE
Washington, DC 20590

ATTN: VIN Coordinator

America's, Inc. d/b/a Ameri-Carts is submitting the below information regarding our company:

Owners of the Company: James F. Parent, President and CEO
Debra K. Parent, Vice President and Secretary/Treasurer

City of Incorporation: America's, Inc. d/b/a Ameri-Carts is an "S" corporation incorporated in the city of Largo, Florida.

Product Manufactured: Ameri-Carts will be the final stage manufacturer of Low Speed Vehicles (LSVs).

GVWR: Per 49 CFR 565, Table II, Gross Vehicle Weight Ratings will be Class "A", not greater than 1,360 kg (3,000 lbs)

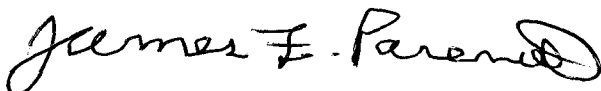
In accordance with 49 CFR 565 Ameri-Carts hereby submits our VIN deciphering characters for the low speed vehicles (LSVs) we will be manufacturing.

<u>VIN Position</u>	<u>Description</u>	<u>Codes</u>
1, 2, 3	WMI Code	1A9 (assigned by SAE)

4	Make	L = Low Speed Vehicle
5	Engine Type	A = 36 Volt Electric B = 48 Volt Electric
<u>VIN Position</u>	<u>Description</u>	<u>Codes</u>
6	Brake Systems	1 = Rear Drum Brakes Only 2 = Four Wheel Cable Drum Brakes 3 = Four Wheel Hydraulic Brakes (Front Disc/Rear Drum) 4 = Four Wheel Hydraulic Disc Brakes
7	Restraint Systems	Type 1 is a Lap Belt Type 2 is an Integral Lap/Shoulder Belt A = Type 1 All Seats B = Type 2 All Seats C = Type 1 Front Seats Type 2 All Remaining Seat Positions D = Type 2 Front Seats Type 1 All Remaining Seat Positions
8	Body	2 = Two Passenger Vehicle, Open Sides 4 = Four Passenger Vehicle, Open Sides 6 = Six Passenger Vehicle, Open Sides 8 = Eight Passenger Vehicle, Open Sides
9	Check Digit	Per Calculation as defined in 49 CFR 565.15 (c) (1) through (4)
10	Model Year	As defined in 49 CFR 565.15 (d) (1), Table VII required Year Codes for VIN
11	Location of Plant	A = Largo, Florida
12, 13, 14	WMI Extension	932 (assigned by SAE)
15 – 17	Sequential Number	Starting Number 001 at beginning of each calendar year

Please feel free to contact me at 727-533-6836 or jim.parent@americasinc.net if you have any questions.

Sincerely,



JAMES F. PARENT
President and CEO, America's, Inc. d/b/a Ameri-Carts