

ORG 8789



LOTUS

Our Ref: TA/USREP/565

Administrator
National Highway Traffic Safety Administration
Washington, DC 20590

Date: 14th November 2011

Dear Sir or Madam

Vehicle Identification Number Requirements

Please find enclosed our submission pursuant to 40 CFR Part 565 – Vehicle Identification Requirements. This drawing detail the unique identifier for each of our vehicles, together with the information required to decipher the characters, as required by the aforementioned regulation.

It is anticipated that 2012 Model Year Evora vehicles will be introduced to the USA market week commencing 1st December 2012. Production of the Elise/Exige has been discontinued in the USA market following the 2011 model-year.

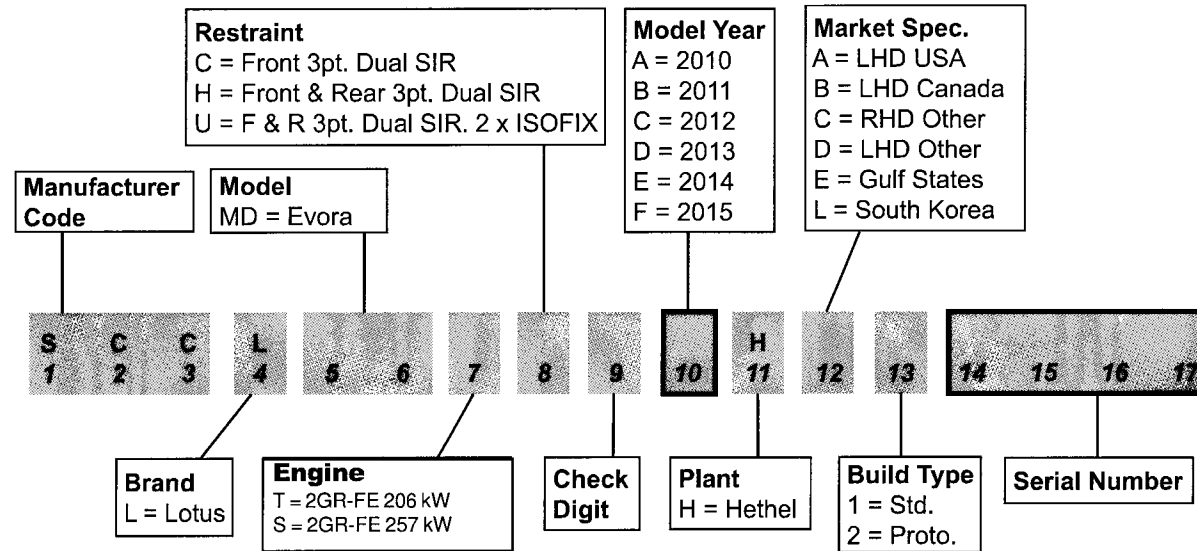
Yours faithfully

Shane Ottaway
US Reporting Engineer
Type Approval Department
Lotus Engineering
Tel: ++44 (0)1953 608603
Email: sottaway@lotuscars.com

Enc:

1. Lotus Evora VIN decoding information.

2010 M.Y. serial no. 0360 onwards



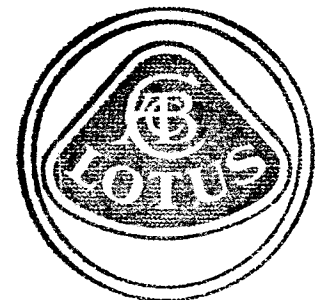
MODEL HISTORY

Evora Introduction:

First deliveries commence June 2009 at '09 VIN serial number 0721.

EVORA

Updated 2nd September 2010



LOTUS CARS LTD.

[Signature]