

# NHTSA's Draft Child Restraint System Safety Plan

by

Cathy Gotschall, Sc.D.

NHTSA



U.S. Department of  
Transportation



# US Child Occupant Fatalities - 1999

- ◆ 1,135 children ages 0-10 killed in 1999
- ◆ 3 children killed every day; 500 injured
- ◆ Child occupant fatality rate 3/100,000



U.S. Department of  
Transportation



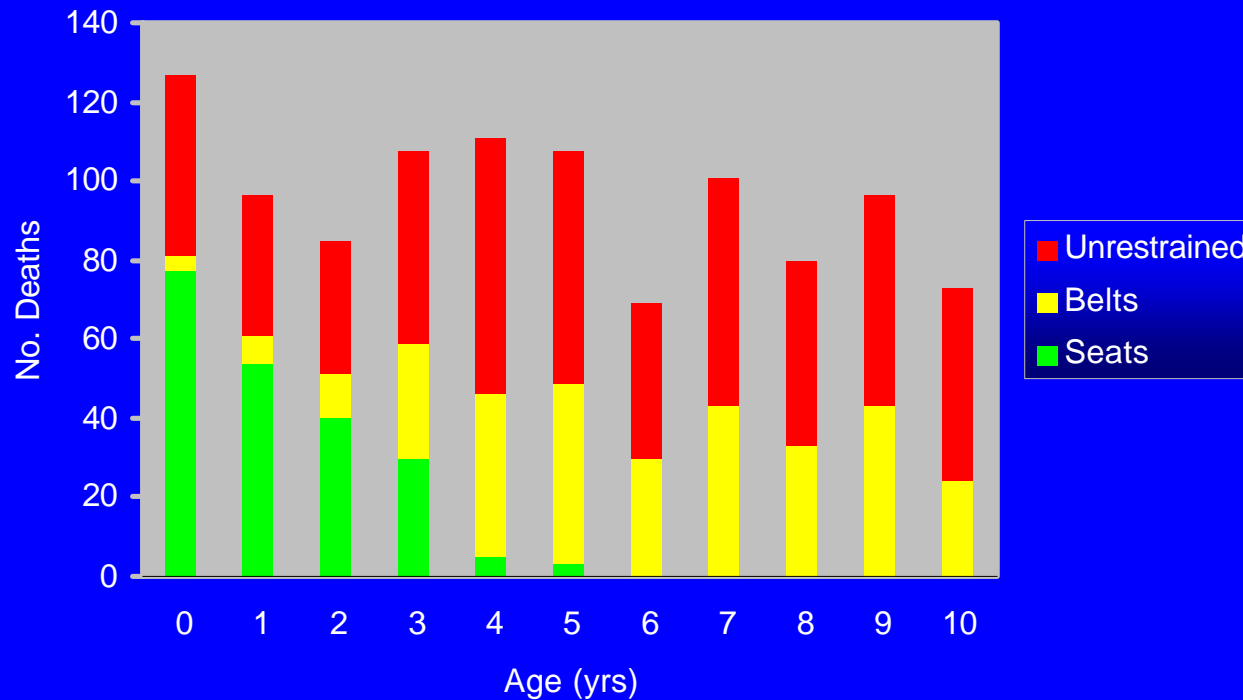
# Child Restraint Use

- >50% of fatalities are unrestrained
- 92% restraint use for children 0-4
- 5-15% of kids 5-8 use booster seats



# Child Deaths by Age and Restraint Use

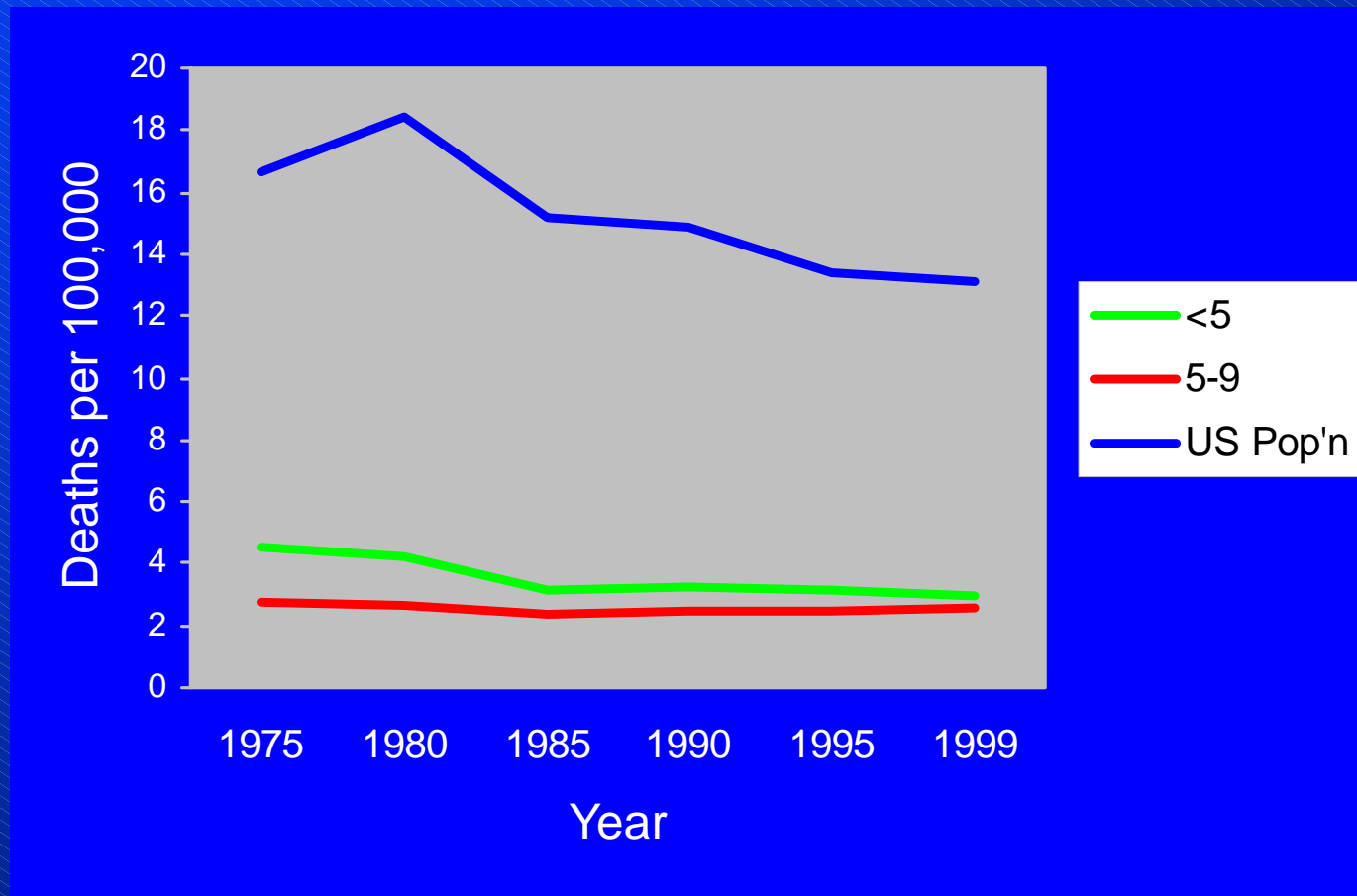
Child Occupant Fatalities by Age and Restraint Use



U.S. Department of  
Transportation



# Occupant Fatality Rates by Age



# Goal of CRS Plan

---

Every child correctly restrained in  
an appropriate CRS  
on every trip



U.S. Department of  
Transportation



# CRS Safety Plan Teams

- < 1. Data Analysis
- < 2. Recalls/Investigations
- < 3. Rulemaking – Requirements/Test Procs
- < 4. Rulemaking – Dummies
- < 5. Rulemaking – Labeling/Consumer Info
- < 6. Ratings – Performance
- < 7. Ratings – Ease of Use/Compatibility
- < 8. NHTSA Hotline & Website
- < 9. Public Information & Education



# Three Key Strategies

---

- Encourage correct use of CRS
- Ensure CRS provide optimal protection
- Provide consumers with useful information





# 1. Encourage Correct CRS Use

- Continue 4 annual mobilizations
- Promote use of booster seats
- Institutionalize CPS training
- Encourage improvement of CRS laws
- Outreach to physicians
- Facilitate Medicaid coverage of CRS



## 2. Ensure Optimal Protection by Child Restraint Systems

- Review FMVSS 213 test sled and crash pulse
- Study protection in non-frontal crashes
- Improve child dummies
- Add CRS to NCAP tests
- Increase reporting of CRS defects
- Review injury criteria for kids



# 3. Provide Use Information to Consumers

- Maintain national CRS info center
- Publish info on CRS safety features
- Enhance CRS info in NHTSA website
- Provide data from compliance tests
- Study feasibility of CRS rating system
- Provide info on belt positioning devices



# NHTSA's CRS Safety Plan

---

[www.nhtsa.dot.gov/people/injury/childps/crsplan/index.html](http://www.nhtsa.dot.gov/people/injury/childps/crsplan/index.html)



U.S. Department of  
Transportation



# Public Comments

- 60-day public comment period
- 20 comments
  - 3 vehicle manufacturers
  - 2 seat manufacturers
  - 3 professional organizations
  - 4 advocacy organizations
  - 5 citizens
  - 1 state



# 1. Encourage Correct CRS Use

- Strong support for strengthening CPS laws
- Broaden scope of professional outreach
- Ensure current certification for CPS technicians; “upgrade” course
- Target programs to schools, students
- Expand, evaluate fitting stations; Explore alternatives?



## 2. Ensure Optimal Protection by Child Restraint Systems

- “Optimal” for whom?
- Encourage development of RF seats with increased leg room
- Support for interim use of “weighted jacket” for 6YO dummy.
- Specific concerns regarding 213 crash pulse, injury criteria; use ECE Reg 44 bench
- Concerns regarding multiple implementation dates



# 3. Provide Use Information to Consumers

- Offer multi-lingual hot line assistance
- Make all publications available on web
- Disagreement concerning utility of data from NCAP testing of CRS
- Questions whether CRS rating system can provide useful information





# Other Suggested Strategies

- < Strategy 4 – Improve motor vehicle environment
  - , Side-impact air bags, seat back strength, power windows, trunk releases
  - , Support for ADR 4 – vehicle belts fit 50% 6-year-old, test belts with 6YO dummy
  - , Review 201 head protection for children



# View Public Comments

---

<http://dms.dot.gov/>

Select “Search”

Docket Number 7938



U.S. Department of  
Transportation

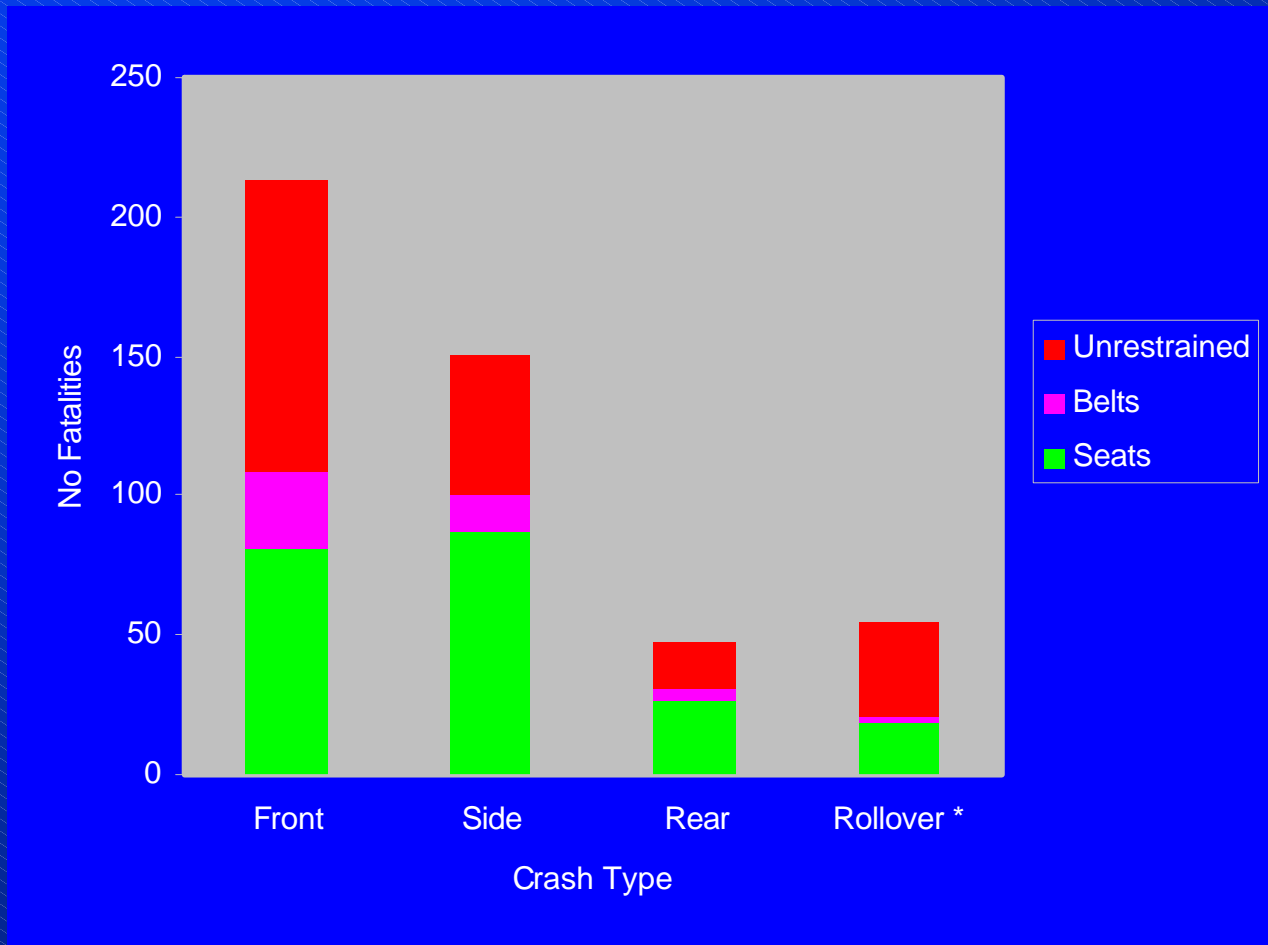


# What Next ???

- < Public comments under review by agency teams
- < Teams propose action on specific comments
- < Agency and Departmental review
- < Final plan by the end of summer



# Child Occupant Fatalities by Crash Type and Restraint Use



U.S. Department of  
Transportation

