



Who has the **RIGHT-OF-WAY?**

Intersection Worksheet

Directions:

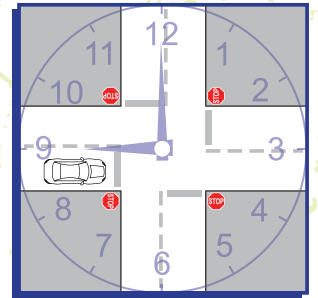
1. Refer to the *Right-of-Way: Intersection Activity* handout.
2. Label each intersection either 2-way or 4-way stop.
3. Circle the vehicle that has the right-of-way (the vehicle that gets to go first).
4. If time allows, discuss as a group or with a partner the right-of-way questions provided below.

Explanation:

Look at the pictures and read the situations carefully; they are all slightly different.

Look for different types of intersections and what's going on the picture. For intersections, some have two (2) stop signs and others have four (4); some vehicles are going straight and others are turning. Hint: To figure out how many stop signs/lights are at an intersection, look for the presence of a heavy line directly in front of each vehicle. This is a **stop line**. In real life, these heavy white lines are used to show **where** the vehicle is supposed to stop because of a stop sign or stop light. To also help with this exercise, look for the presence of turn signals: a blinker for a car, an arm signal for a bicyclist.

The questions below reference the hands on a clock. When you are told a vehicle is in the 9 o'clock position, for example, associate this with the position of the small hand of a clock at 9.



Discussion Questions:

- Q In picture #1, who would have the right-of-way if the car and bicycle arrived at the intersection at the same time and were both going straight?
- Q In picture #2, who would have the right-of-way if the car was also taking a left turn? Can both vehicles go at the same time?
- Q In picture #3, who would have the right-of-way if all three vehicles arrived at the intersection at the same time and the vehicle at the 9 o'clock position was turning left instead of going straight?
- Q In picture #4, who would have the right-of-way if this was a 4-way stop instead of a 2-way stop intersection?
- Q In picture #5, who would have the right-of-way if an additional car heading straight (from the 6 o'clock position), opposite the car turning left, was included?
- Q In picture #6, who would have the right-of-way if both vehicles arrived at the intersection at the same time?