

Lincoln Navigator Compatibility Test Series

**SAE Government Industry
Meeting**

May 13, 2003

- **Evaluate effect of Navigator redesign on crash partner**
 - Full frontal engagement, both vehicles 30 mph
 - 2003 and 1999, 4 door Lincoln Navigators
- **2 V-to-V tests with 1996 Dodge Neon**
 - Evaluate injuries and deformations in crash partner
 - Did vehicle redesign affect safety in crash partner ?
- **2 LCMDB-to-V tests**
 - Adjust LCMDB to match Neon weight
 - Do load cell measures reflect the V-to-V tests ?
- **2 Vehicle to Barrier tests**
 - Conducted by Ford and MIRA

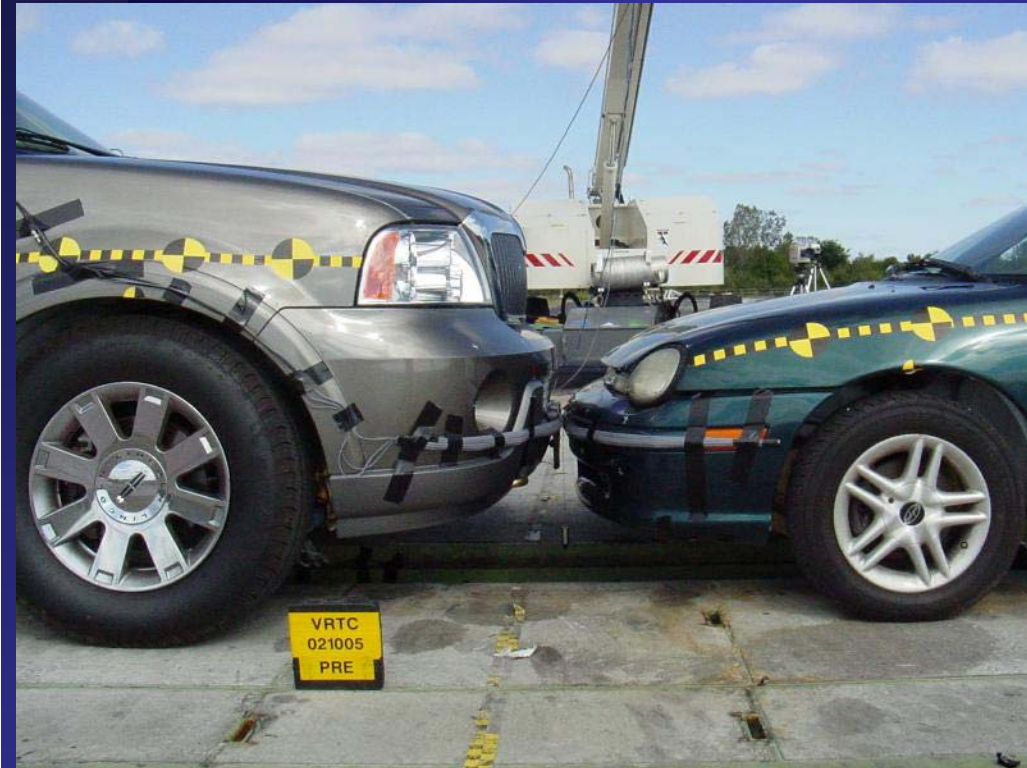
- **V-to-V tests conducted in October**
- **High resolution barrier testing conducted in March**
 - MIRA 50 by 50 mm load cell barrier
 - Detailed analysis still underway
- **LCMDB to vehicle tests underway**
 - Tests to be conducted this week or next

Pre Test Alignment

2003 Navigator

3027 kg / 1398 kg

NHTSA Test 4430



1999 Navigator

2873 kg / 1378 kg

NHTSA Test 4429

1999 Navigator



2003 Navigator



Post Test



2003 Navigator

1999 Navigator





2003 Navigator
post test

1999 Navigator
post test



1996 Neon struck
by
2003 Navigator



1996 Neon struck
by
1999 Navigator



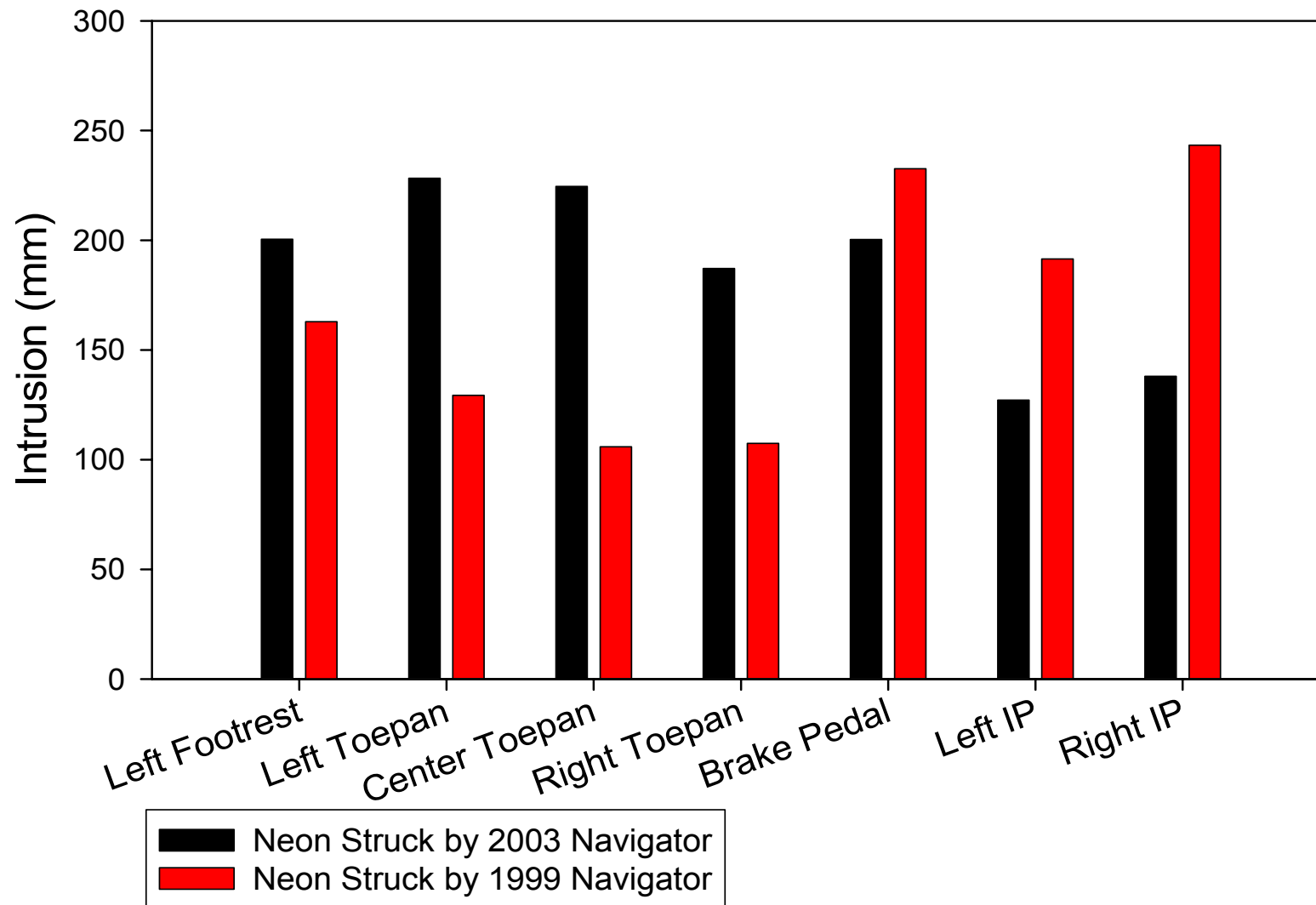
Neon Driver Injury Criteria

Criteria	1999 Navigator	2003 Navigator
HIC15	327	735.6
Chest G	64.5	68.1
Chest Deflection	42.8 mm	27.9
Max Nij	0.37 (TE)	0.40 (TE)
Femur	10,094 (left)	7053 (left)
Tibia Index	0.92 (upper left)	1.33 (upper right)

- **Toepan intrusion measurements were higher for the Neon struck by the 2003 Navigator**
 - Instrument panel intrusions were higher for the Neon struck by the 1999 Navigator
- **Toepan intrusions were low for both Navigators**
 - Intrusions measured on 2003 Navigator were consistently lower

Intrusion Measurements

Neon Intrusion

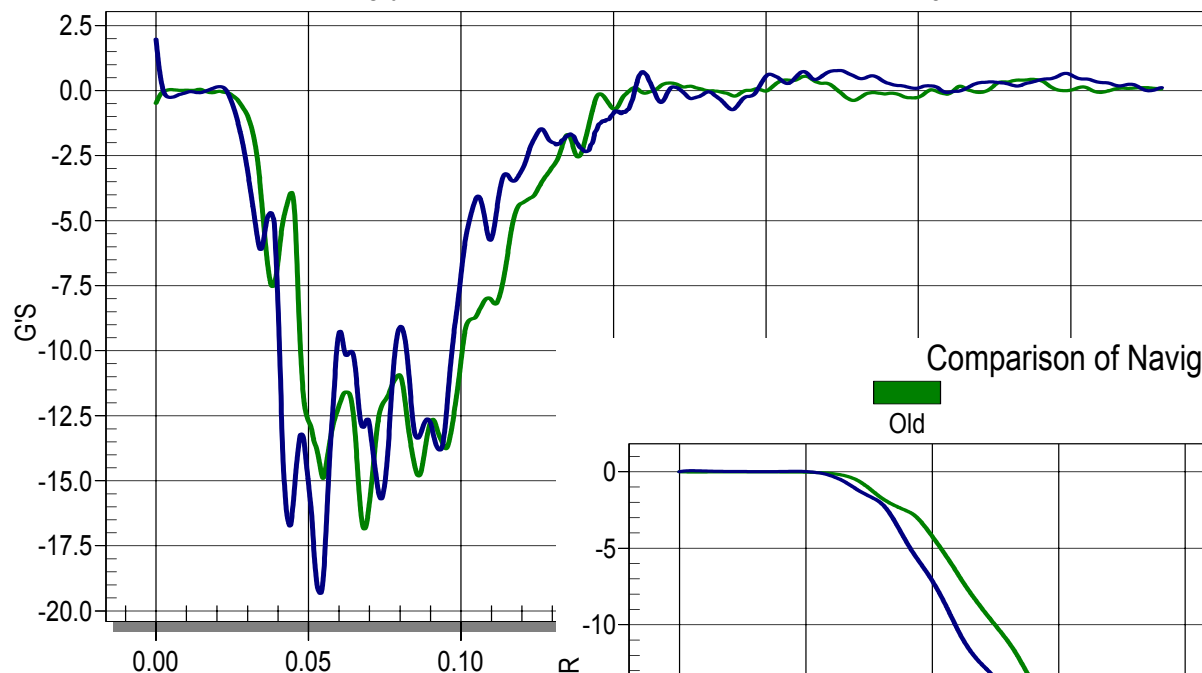


Navigator Acceleration

Comparison of Navigator Sill Acceleration

Old

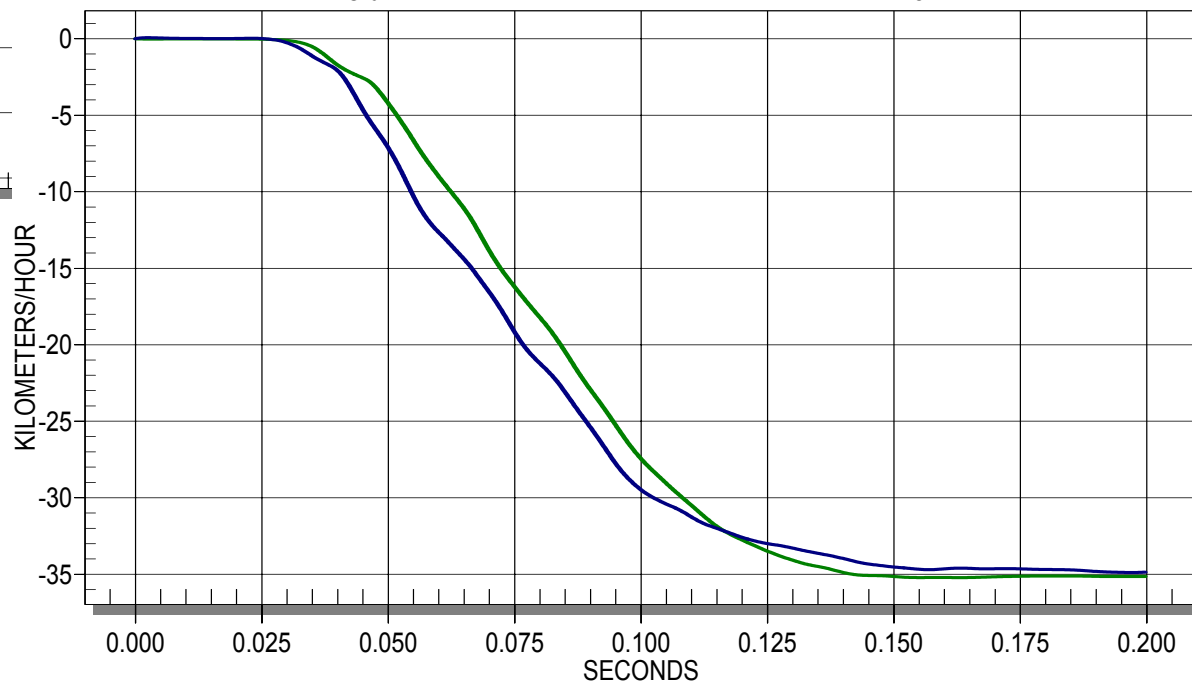
New



Comparison of Navigator Sill Velocity

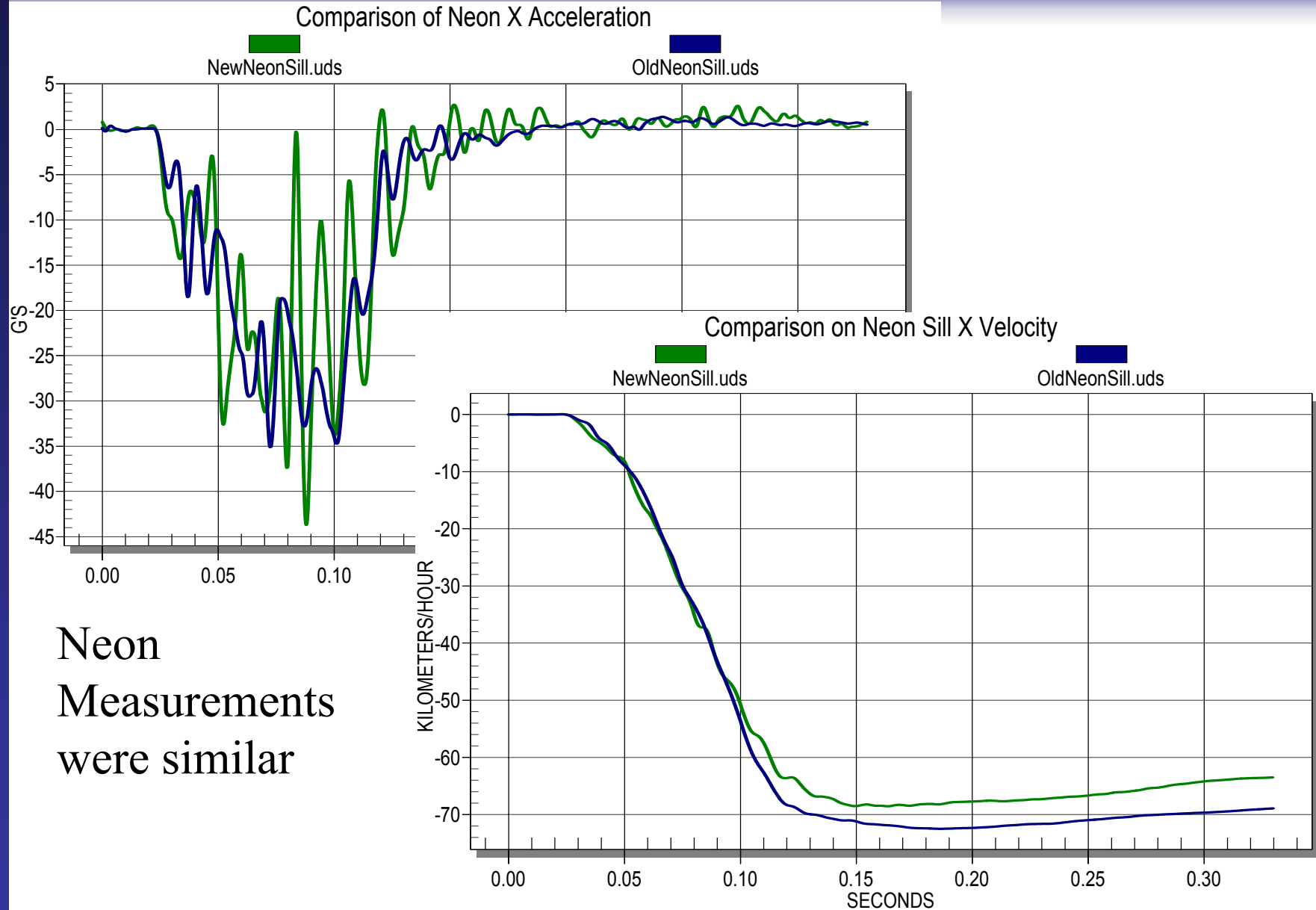
Old

New



1999 Navigator
decelerated a
little later

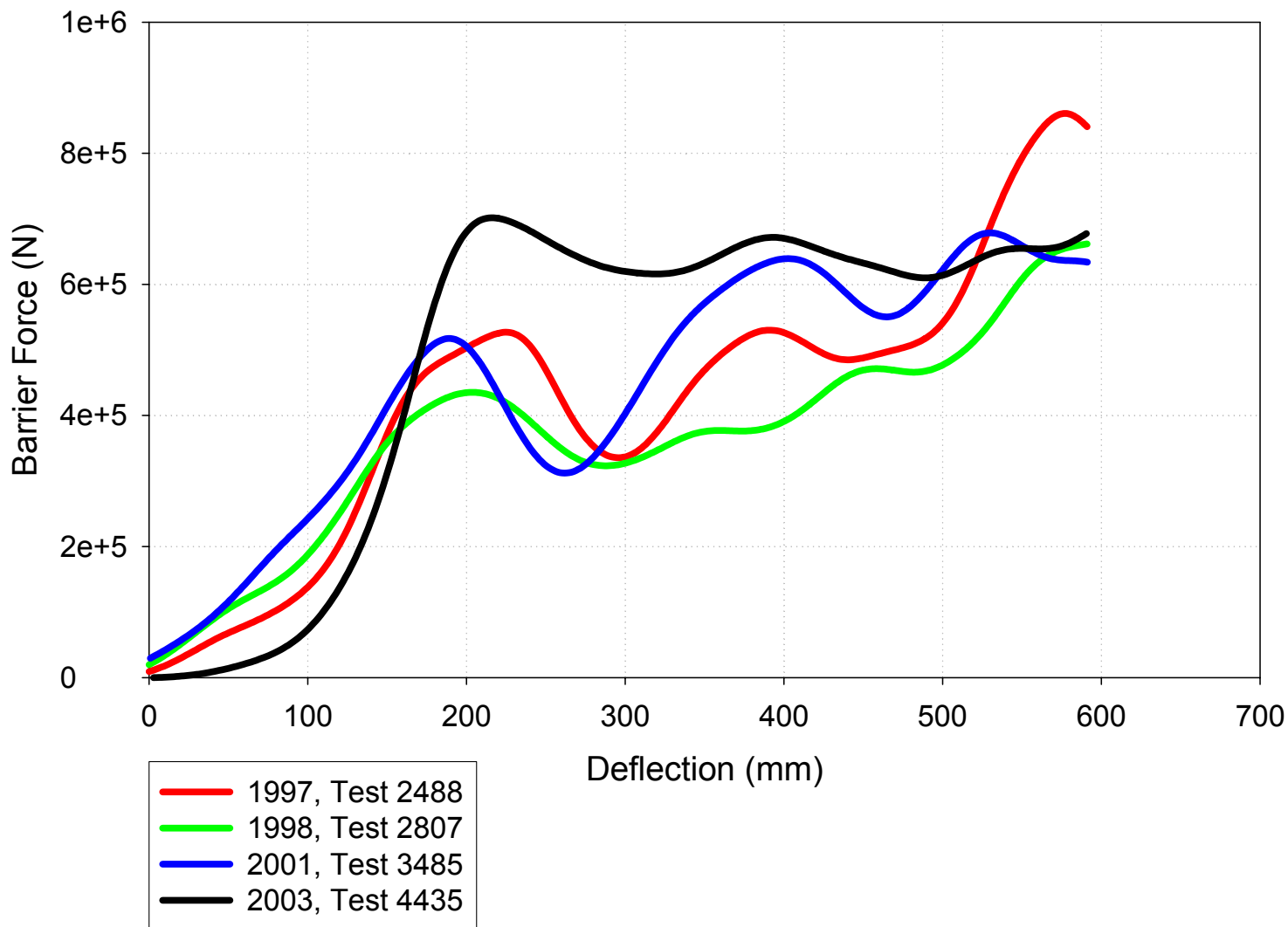
Neon Acceleration Data



- **No frontal NCAP tests for Lincoln Navigator**
 - Several tests exists for Ford Expedition
 - 2003 Expedition is somewhat “stiffer” than previous models
- **2003 Expedition test conducted on low resolution barrier (MGA)**
 - Cannot compare average height of force

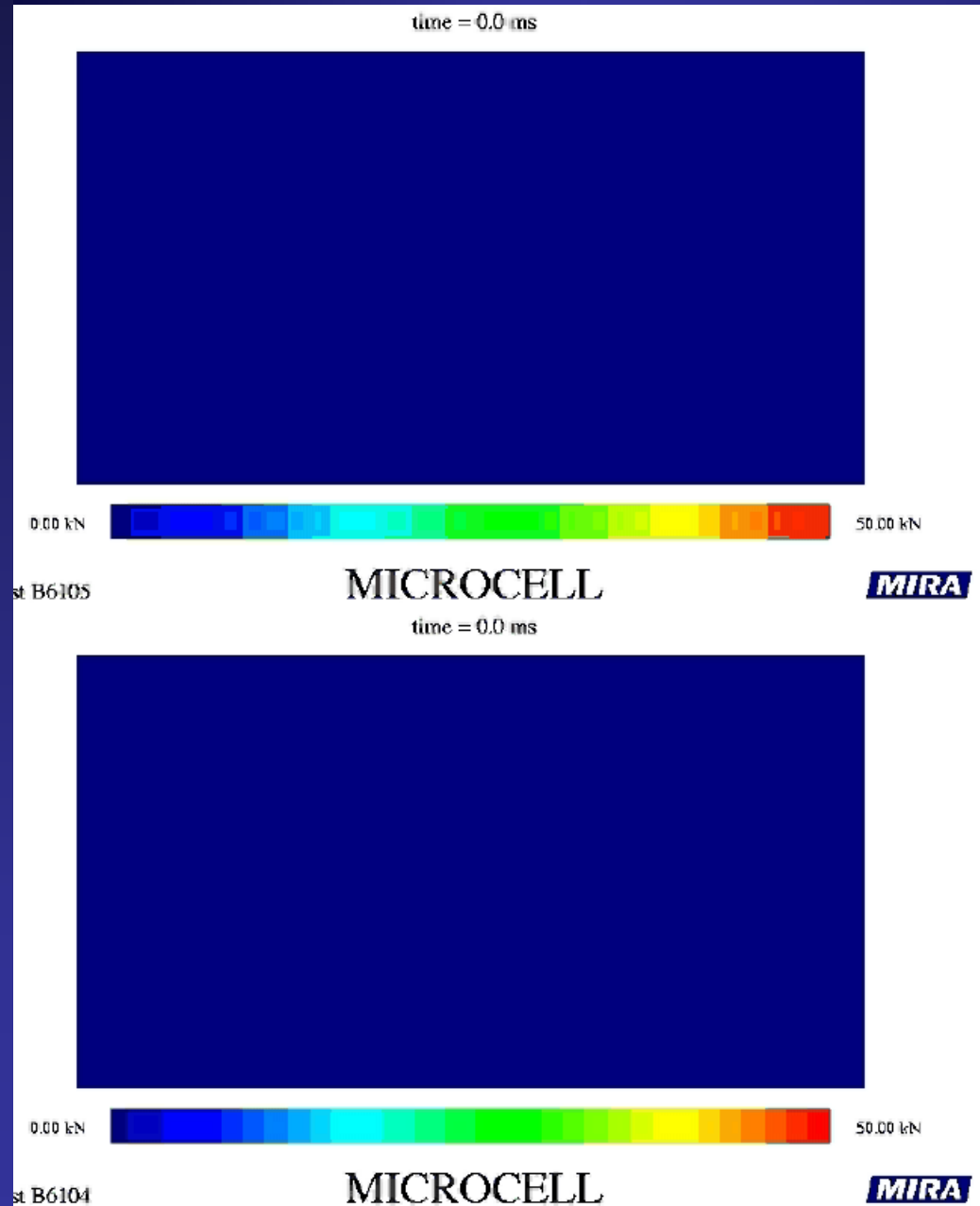
Force Deflection

Force Deflection from Frontal NCAP Expedition tests



- **LCMDB-to-Vehicle tests underway**
 - 214 MDB faces without bumper element
 - 30 mph, both vehicles moving
 - To evaluate if the LCMDB can measure a difference in performance commensurate with the performance in V-to-V testing
- **New load cell wall being purchased**
 - 125 by 125 mm resolution
 - Delivery and preliminary testing expected by the end of summer

Ford / MIRA Load Cell Data



Crash tests were conducted at MIRA using their high resolution load cell wall

Software currently being finalized to evaluate compatibility metrics (AHOF, homogeneity, etc)

- **Software available to evaluate NCAP load cell data from NHTSA web site**
 - Plots load contours, AHOF, etc.
 - Can save plots, avi's, test data to local PC
 - Runs on local PC, downloads test data from internet
 - Requires MS Windows XP, 2000, ME or 98
 - <http://www-nrd.nhtsa.dot.gov/software/load-cell-analysis>
 - NHTSA.dot.gov -> Research -> R&D Software -> LoadcellAnalysis
 - Just released, feedback needed
 - 56k modem takes ~1 minute to load a test