



NHTSA

NATIONAL HIGHWAY TRAFFIC SAFETY ADMINISTRATION

Crash Investigation Sampling System (CISS) Expansion Plans


John Brophy

January 19, 2023

Background

- The Crash Investigation Sampling System (CISS) began data collection in 2016
 - NASS CDS replacement (1979-2015)
- Since 2018, there have been 32 CISS data collection sites across the country
- CISS is a nationwide sample of police-reported motor vehicle crashes where at least one passenger vehicle (i.e., car, light truck or vans* less than 10,000 lbs.) is towed from the crash scene
 - No data collected on pedestrians, motorcyclists, large trucks

* = Includes pickups, vans and SUVs

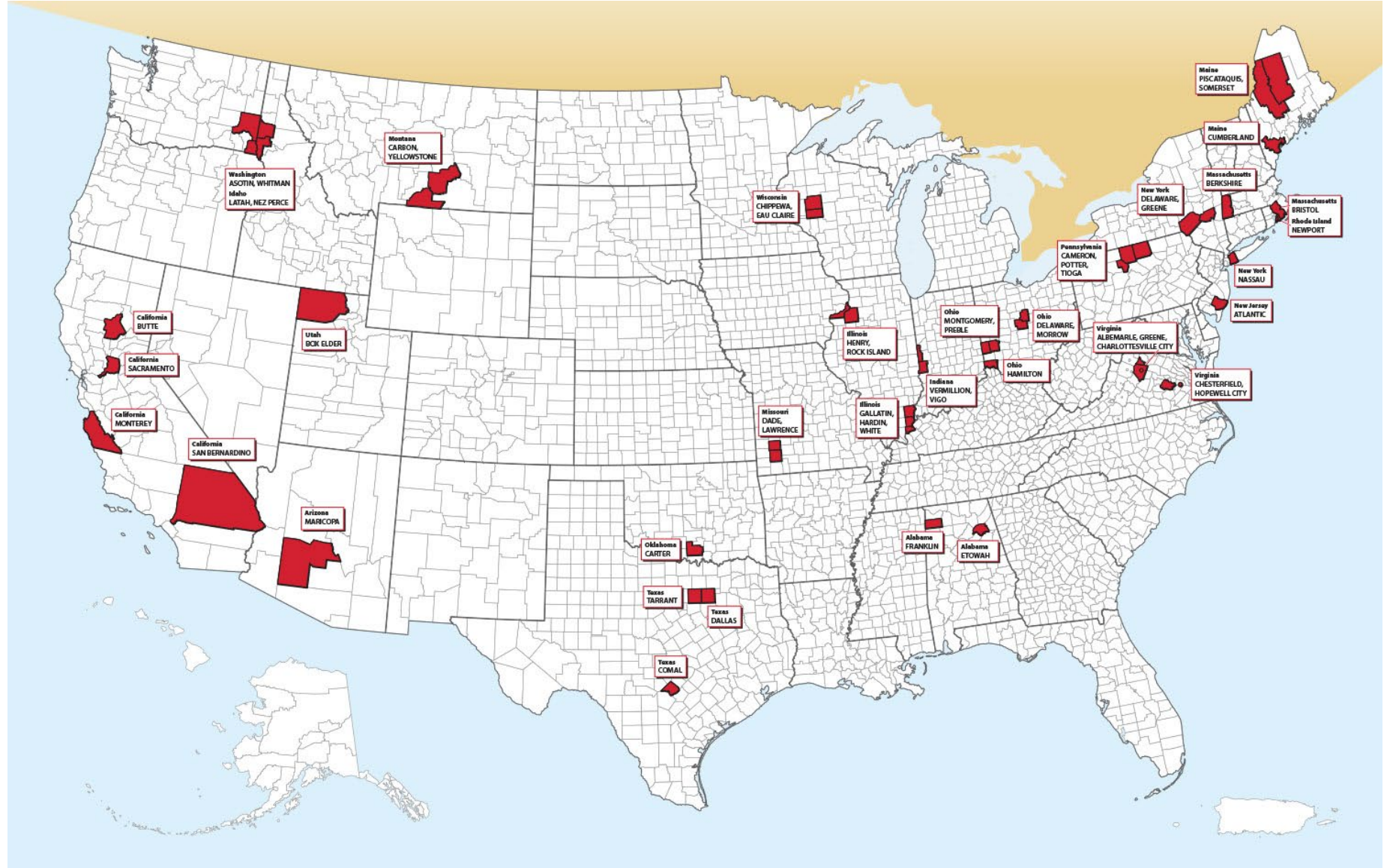
Background

- CISS is an investigation-based program where data is collected from:
 - Vehicle inspections (crash, occupant contacts, etc. & EDR if applicable)
 - Scene inspections (including scaled diagrams - when applicable)
 - Occupants (including medical records)
- Since 2016 CISS has published 14,689 cases to:
<https://crashviewer.nhtsa.dot.gov>
- NHTSA has over 26,000 EDR files from crashes



Background

- Current 32 CISS data collection sites
- Ten of the 32 sites are operating with only one crash data collection technician



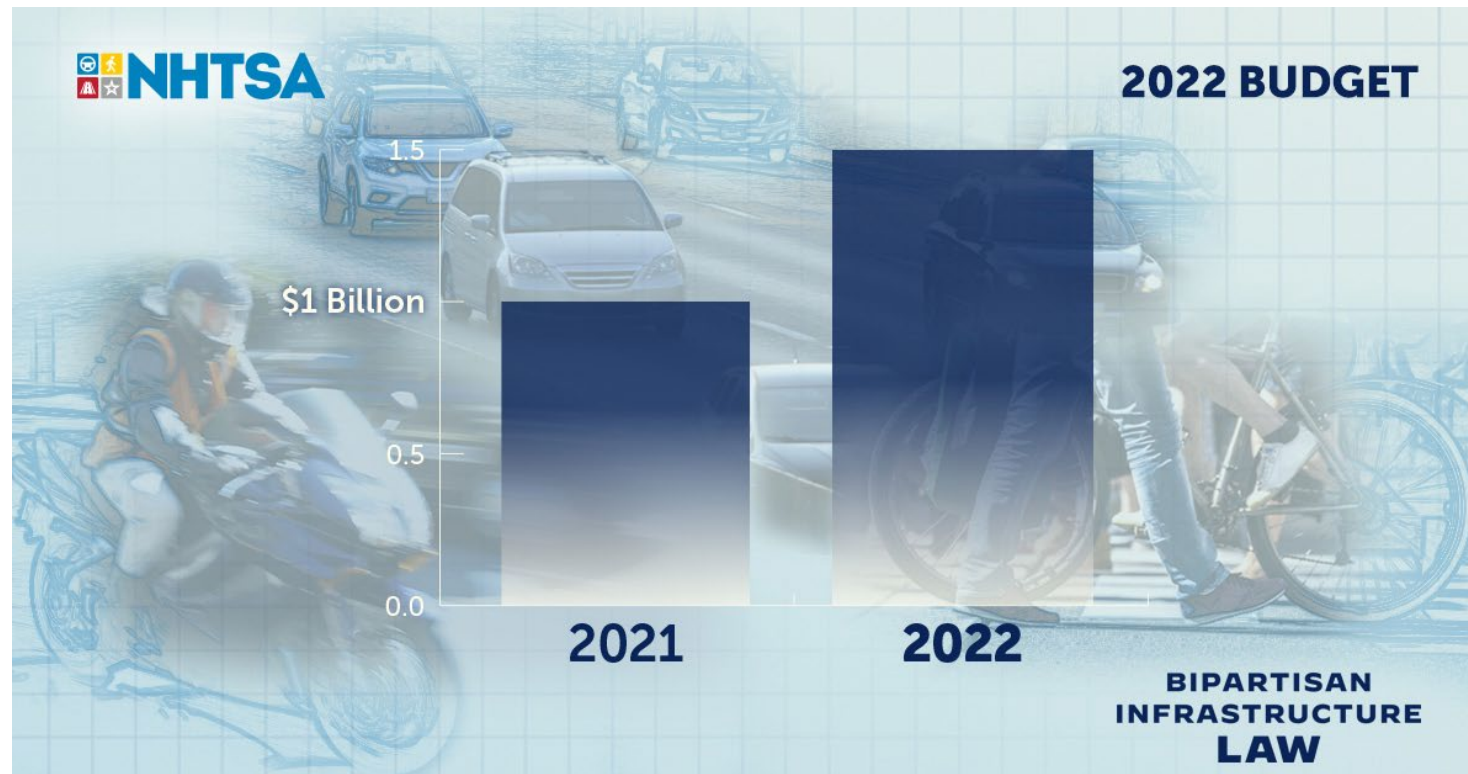
2021 CISS Released in December

- In 2021 CISS, 3,331 police-reported crashes were investigated where at least one passenger vehicle was towed from the scene
 - This represents an estimated 2,698,338 police-reported crashes
- In the 3,331 crashes, 5,935 vehicles were involved
- Throughout COVID, CISS remained operational
 - Data collection and training adjustments were implemented



Bipartisan Infrastructure Law

- The Infrastructure Investment and Jobs Act (IIJA) passed on 11/15/2021
- Referred to as Bipartisan Infrastructure Law (BIL)



Crash Data Overview

- As part of the law “Crash Data” was specifically mentioned in Section 24108:



TITLE IV--HIGHWAY AND MOTOR VEHICLE SAFETY

Subtitle A--Highway Traffic Safety

Sec. 24101. Authorization of appropriations.

Sec. 24102. Highway safety programs.

Sec. 24103. Highway safety research and development.

Sec. 24104. High-visibility enforcement programs.

Sec. 24105. National priority safety programs.

Sec. 24106. Multiple substance-impaired driving prevention.

Sec. 24107. Minimum penalties for repeat offenders for driving while intoxicated or driving under the influence.

Sec. 24108. Crash data.

Sec. 24109. Review of Move Over or Slow Down Law public awareness.

Sec. 24110. Review of laws, safety measures, and technologies relating to school buses.

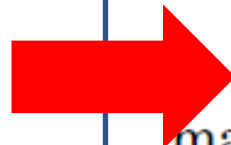
Sec. 24111. Motorcyclist Advisory Council.

Sec. 24112. Safe Streets and Roads for All grant program.

Sec. 24113. Implementation of GAO recommendations.

Crash Data Overview

- Among things like collect data on “vulnerable road users”, “Electronic Data Collection” etc., the law SPECIFICALLY mentioned CISS and mandated:



(A) increasing the capacity of the National Highway Traffic Safety Administration system; and
(B) making State crash data accessible to the public.
(e) **CRASH INVESTIGATION SAMPLING SYSTEM.**—The Secretary may use funds made available to carry out this section to enhance the collection of crash data by upgrading the Crash Investigation Sampling System to include—

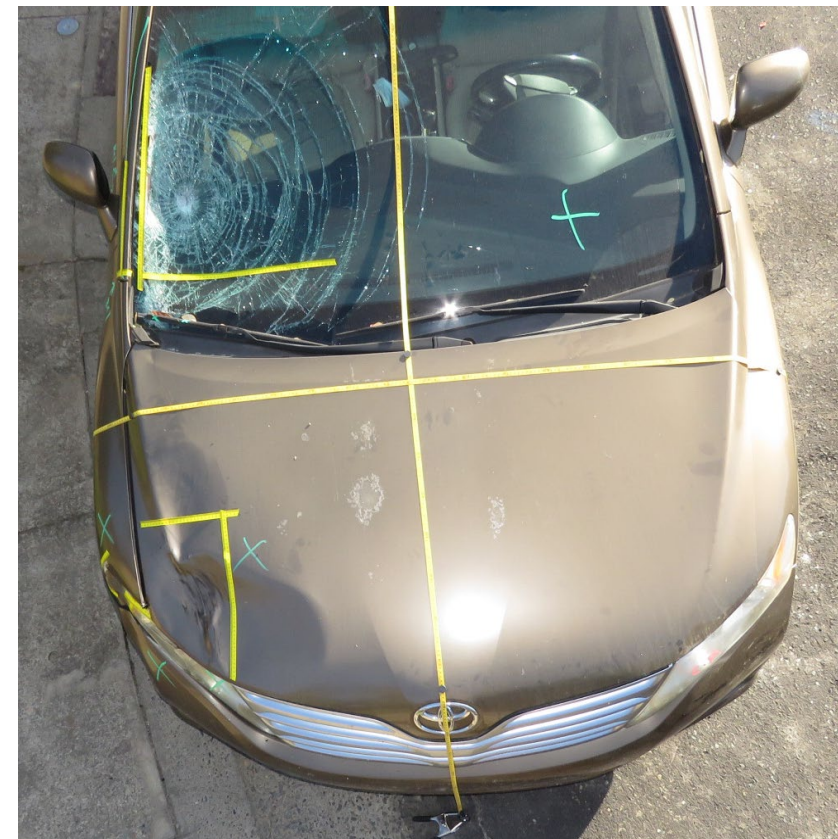
- (1) additional program sites;
- (2) an expanded scope that includes all crash types; and
- (3) on-scene investigation protocols.

Crash Data Overview

- NHTSA / NCSA / Office of Data Acquisition / Crash Investigation Division (CID) is coordinating with numerous NHTSA offices for BIL implementation:
 - Budget
 - Mathematical Analysis Division
 - Information Technology Division
 - Acquisitions (Contracts)
 - Administration
- Efforts throughout 2022 focused on infrastructure changes to implement expansion

Crash Data Overview

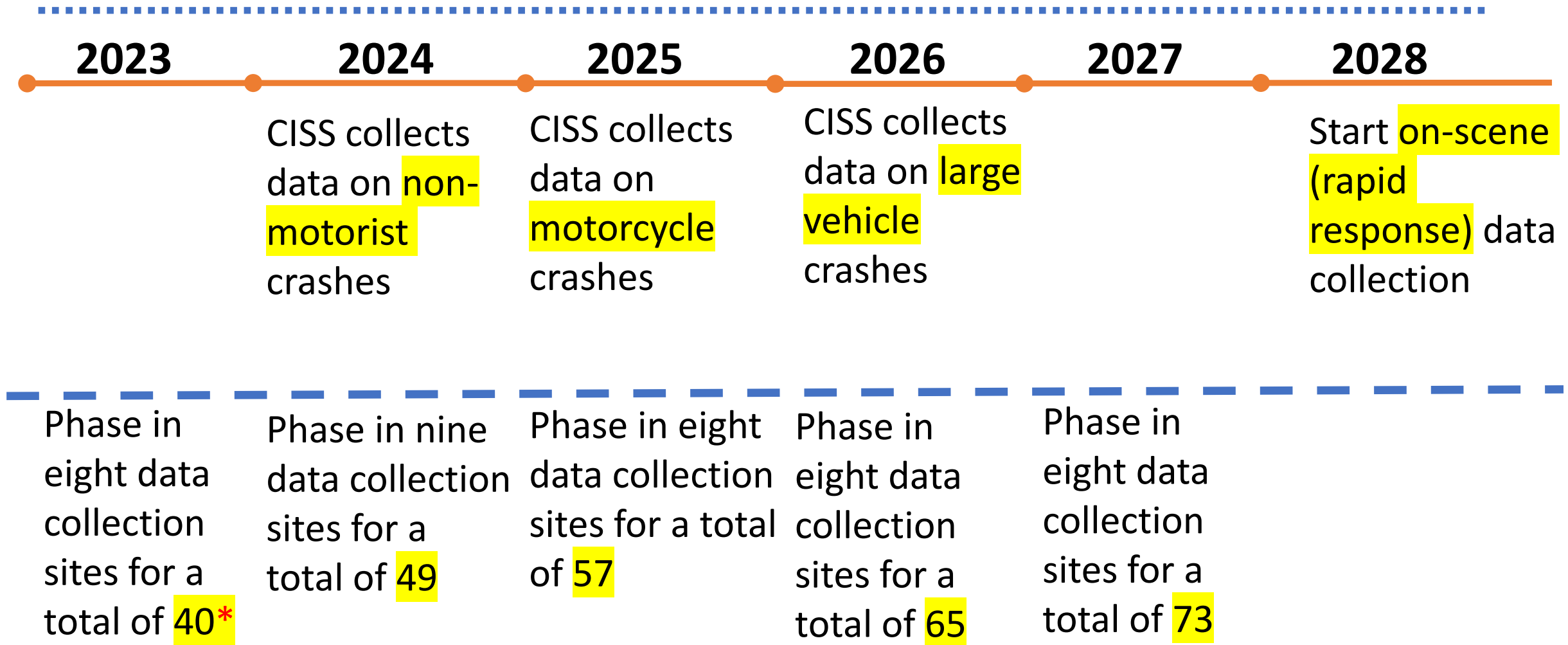
- Expansion is ONE part of the BIL for CISS
- We MUST maintain current operations at 32 PSU's while also focusing on:
 - 1) Additional CISS Program Sites
 - 2) An expanded scope that includes all crash types; and
 - 3) On-scene investigation protocols



Off to a Great Start

- Roadmap developed for CISS expansion:
 - Modified sampling to count crashes involving non-motorist, motorcycle and large vehicle crashes to inform the new sample design
 - Began to collect documentation for the already-identified 40+ additional data collection sites including crash counts
 - Paperwork Reduction Act requirements submitted and approved to include additional crash data collection
 - Hiring additional resources
 - Adding ten additional technicians to the one-person CISS sites
 - Multiple procurement efforts are being developed

CISS Expansion Timeline



* = Including 10 additional Crash Technicians for current one person sites

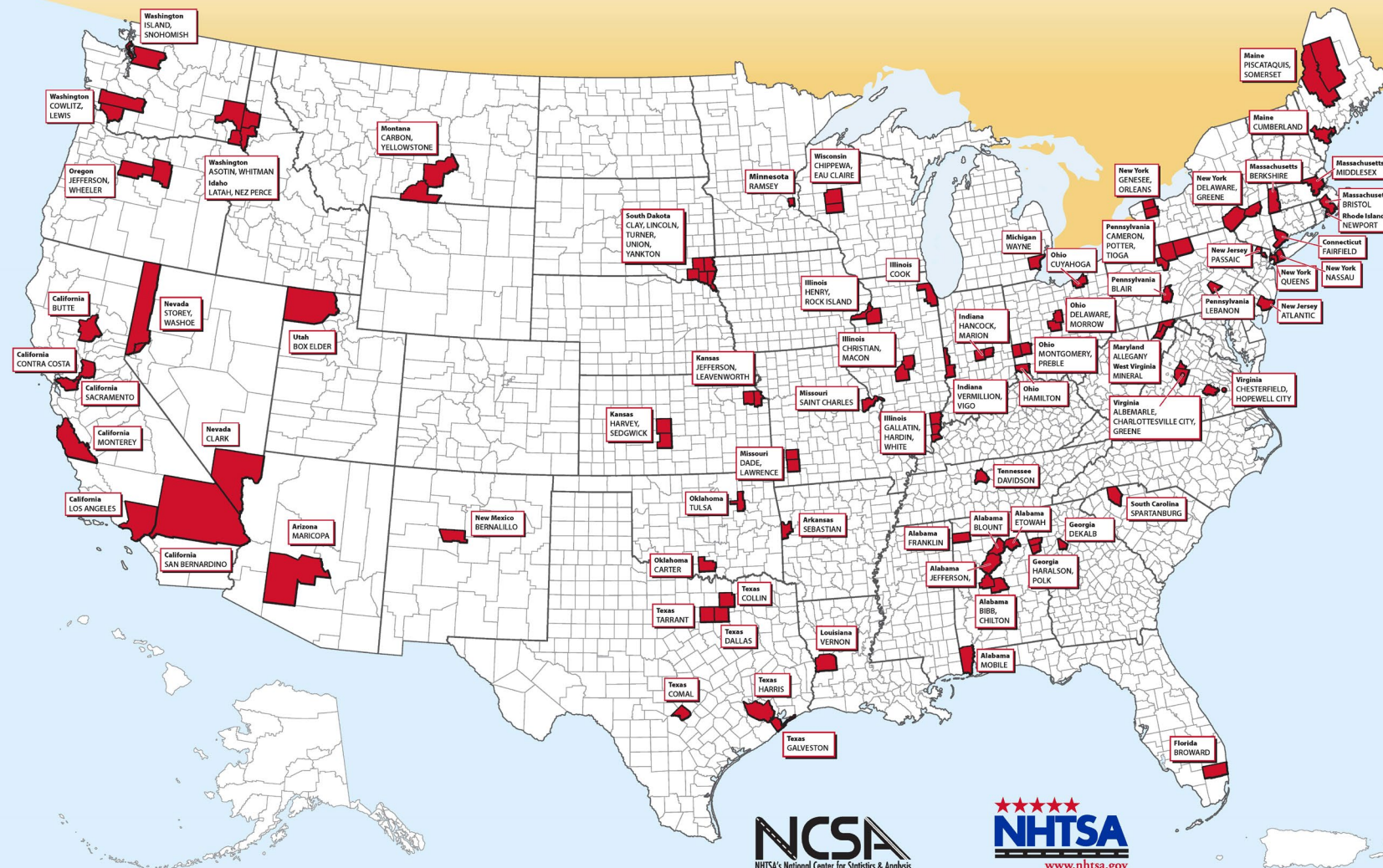
CISS 73 PSUs

Crash Investigation Sampling System

73 Phase III Data Collection Sites



- With 73 Data Collection Sites – CISS cases could increase from ~4,000 to ~11,000 cases per year



Summary

- CISS expansion made possible with the passage of the Bipartisan Infrastructure Law
- CISS will continue to operate with 32 Primary Sampling Units (PSUs) through 2023
- Beginning in 2024 CISS will expand by roughly eight teams per year for a total of 73 PSUs
- Additionally, all crash types (non-occupants, motorcycles, large vehicles) will be phased in beginning in 2024
- On-scene, or rapid response - will be phased in later in the expansion

Questions?



Thank You

John.Brophy@dot.gov

