

SUMMARY OF FUEL ECONOMY PERFORMANCE

(Public Version)

October 28, 2011

**U.S. DEPARTMENT OF TRANSPORTATION
NHTSA, NVS-220
1200 New Jersey Avenue, SE, West Bldg.
Washington, DC 20590**

**Refer questions or comments to
Mr. Terry Anderson, (202) 366-6030**

LEGEND

CAFE - Corporate Average Fuel Economy (sales volume weighted)

A - CAFE adjusted for test procedure changes

FLEETS

DP - Domestic Passenger Car

IP - Import Passenger Car

LT - Light Truck (GVWR is 8,500 lb or less)

IT - Captive Import Light Truck

A light truck which is not domestically manufactured but imported by a manufacturer whose principal place of business is in the United States (4x2 and 4x4 combined)

OT - Not a Captive Import Light Truck (4x2 and 4x4 combined)

SOURCES

1 - Based on Pre-Model Year Fuel Economy Report Data

2 - Based on Mid-Model Year Fuel Economy Report Data

3 - Based on Final EPA Data

NOTES

- This report contains estimated fleet production numbers and CAFE figures obtained from pre-model year (source 1) and mid-model year (source 2) documents assembled prior to or during the model year. The actual mpg values reported to EPA at the end of these model years may differ slightly from the data that manufacturers reported to NHTSA, which could affect the fleet average mpgs for these years.
- This report contains CAFE data for each model year 2002 - 2011. To obtain CAFE data for prior model years (1978 - 2001) contact Mr. Terry Anderson at (202) 366-6030.

CAFE STANDARDS

MODEL YEAR	PASSENGER CARS	LIGHT TRUCKS		
		COMBINED	2WD	4WD
1978	18.0			
1979	19.0		17.2	15.8
1980	20.0		16.0	14.0
1981	22.0		16.7	15.0
1982	24.0	17.5	18.0	16.0
1983	26.0	19.0	19.5	17.5
1984	27.0	20.0	20.3	18.5
1985	27.5	19.5	19.7	18.9
1986	26.0	20.0	20.5	19.5
1987	26.0	20.5	21.0	19.5
1988	26.0	20.5	21.0	19.5
1989	26.5	20.5	21.5	19.0
1990	27.5	20.0	20.5	19.0
1991	27.5	20.2	20.7	19.1
1992	27.5	20.2		
1993	27.5	20.4		
1994	27.5	20.5		
1995	27.5	20.6		
1996	27.5	20.7		
1997	27.5	20.7		
1998	27.5	20.7		
1999	27.5	20.7		
2000	27.5	20.7		
2001	27.5	20.7		
2002	27.5	20.7		
2003	27.5	20.7		
2004	27.5	20.7		
2005	27.5	21.0		
2006	27.5	21.6		
2007	27.5	22.2		
2008	27.5	22.5*		
2009	27.5	23.1*		
2010	27.5	23.5*		
2011	30.1**	24.2**		

* - The values shown are the standard values applicable under the existing "unreformed" CAFE program. In model years 2008-2010, light truck manufacturers have the option to comply with the unreformed standard values or the new reformed standard values based upon each manufacturers unique vehicle fleet characteristics.

** - Projected 2011 required average fuel economy standard value based on MMY reports.

SUMMARY

CAFE

MODEL YEAR	TOTAL FLEET	PASSENGER CARS	DOMESTIC	IMPORT	LIGHT TRUCKS	OTHER	CAPTIVE IMPORT
1978	19.9	19.9	18.7	27.3			
1979	20.1	20.3	19.3	26.1	18.2	18.2	
1980	23.1	24.3	22.6	29.6	18.5	17.8	25.7
1981	24.6	25.9	24.2	31.5	20.1	19.6	26.7
1982	25.1	26.6	25.0	31.1	20.5	20.3	26.7
1983	24.8	26.4	24.4	32.4	20.7	20.6	28.4
1984	25.0	26.9	25.5	32.0	20.6	20.6	27.2
1985	25.4	27.6	26.3	31.5	20.7	20.6	27.1
1986	25.9	28.2	26.9	31.6	21.5	21.4	23.3
1987	26.2	28.5	27.0	31.2	21.7	21.7	22.3
1988	26.0	28.8	27.4	31.5	21.3	21.2	22.4
1989	25.6	28.4	27.2	30.8	21.0	20.9	21.8
1990	25.4	28.0	26.9	29.9	20.8	20.8	17.6
1991	25.6	28.4	27.3	30.1	21.3	21.3	20.4
1992	25.1	27.9	27.0	29.2	20.8	20.8	21.0
1993	25.2	28.4	27.8	29.6	21.0	21.0	24.3
1994	24.7	28.3	27.5	29.6	20.8	20.8	0.0
1995	24.9	28.6	27.7	30.3	20.5	20.5	0.0
1996	24.9	28.5	28.1	29.6	20.8		
1997	24.6	28.7	27.8	30.1	20.6		
1998	24.7	28.8	28.6	29.2	21.0		
1999	24.5	28.3	28.0	29.0	20.9		
2000	24.8	28.5	28.7	28.3	21.3		
2001	24.5	28.8	28.7	29.0	20.9		
2002	24.7	29.0	29.1	28.8	21.4		
2003	25.1	29.5	29.1	29.9	21.8		
2004	24.6	29.5	29.9	28.7	21.5		
2005	25.4	30.3	30.5	29.9	22.1		
2006	25.8	30.1	30.3	29.7	22.5		
2007	26.6	31.2	30.6	32.2	23.1		
2008	27.1	31.5	31.2	31.8	23.6		
2009	29.0	32.9	32.1	33.8	24.8		
2010	29.3	33.9	33.1	35.2	25.2		
2011	29.6	33.8	32.5	35.3	24.5		

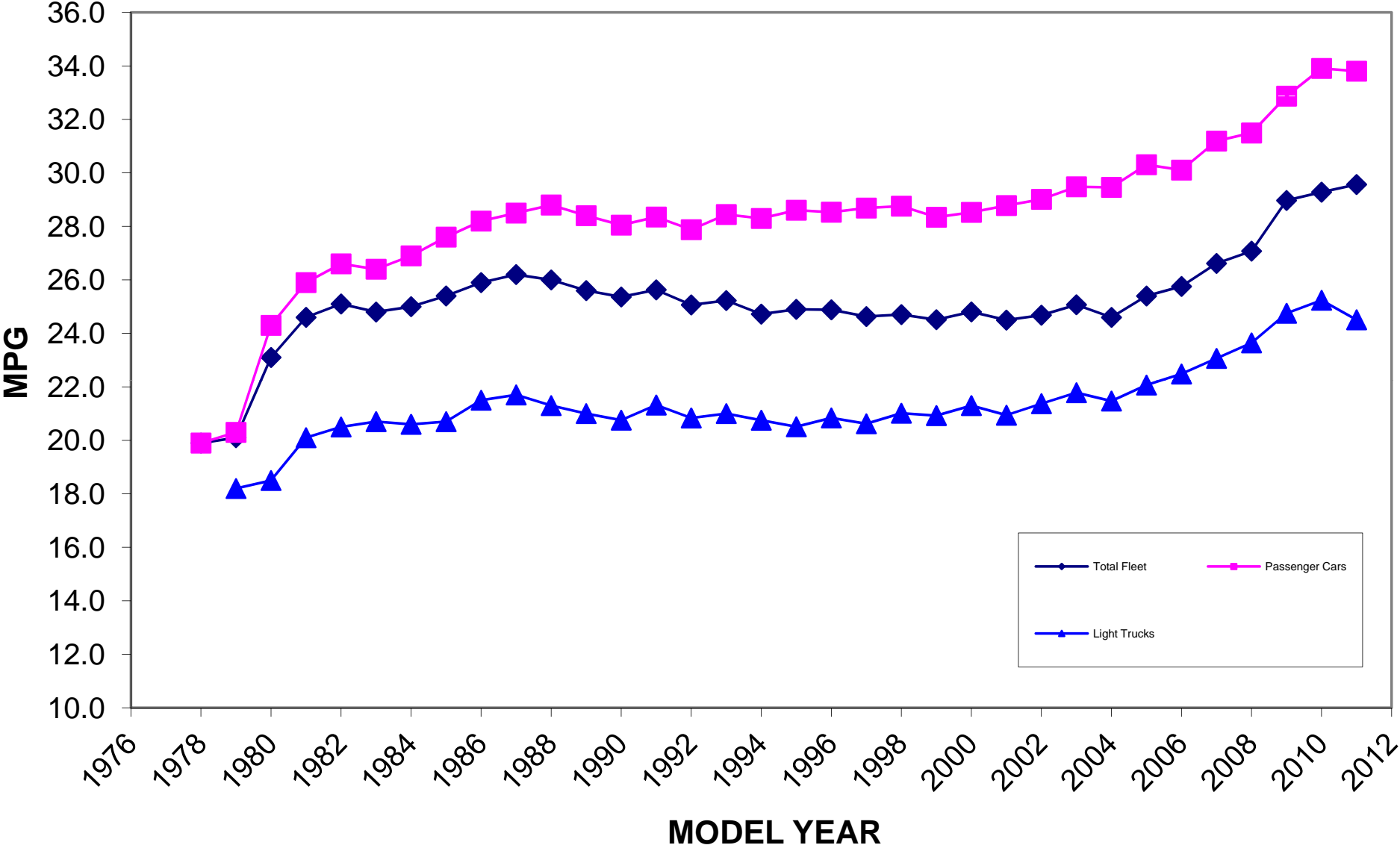
SALES VOLUME

MODEL YEAR	TOTAL FLEET	PASSENGER CARS	DOMESTIC	IMPORT	LIGHT TRUCKS	OTHER	CAPTIVE IMPORT
1978	11,182,347	11,182,347	9,117,833	2,064,514			
1979	11,912,298	10,747,622	8,683,544	2,064,078	1,164,676	1,164,676	
1980	11,274,924	9,389,820	6,687,791	2,702,029	1,885,104	1,656,070	229,034
1981	10,537,143	8,687,154	6,217,601	2,469,553	1,849,989	1,676,984	173,005
1982	9,700,362	7,752,124	5,442,276	2,309,848	1,948,238	1,879,882	68,356
1983	10,275,599	7,966,753	5,562,787	2,403,966	2,308,846	2,284,370	24,476
1984	14,114,857	10,669,856	7,896,517	2,773,339	3,445,001	3,397,193	47,808
1985	14,574,365	10,795,693	7,735,957	3,059,736	3,778,672	3,716,846	61,826
1986	15,439,944	11,016,850	7,426,980	3,589,870	4,423,094	4,309,308	113,786
1987	14,837,586	10,671,148	6,569,407	4,101,741	4,166,438	4,028,995	137,443
1988	15,299,064	10,694,680	6,569,200	4,125,480	4,604,384	4,508,937	95,447
1989	14,453,323	10,004,974	6,216,306	3,788,668	4,448,349	4,361,371	86,978
1990	12,616,572	8,814,629	5,113,107	3,701,522	3,801,943	3,781,762	20,181
1991	12,587,853	8,529,947	5,093,338	3,436,609	4,057,906	4,044,344	13,542
1992	12,190,563	8,142,792	4,715,619	3,427,173	4,047,771	4,039,709	8,051
1993	13,239,451	8,479,737	5,404,779	3,074,958	4,759,714	4,758,958	925
1994	13,987,636	8,422,592	5,257,594	3,164,998	5,565,044	5,565,044	0
1995	15,144,646	9,433,700	5,952,566	3,481,134	5,710,946	5,710,946	0
1996	13,144,417	7,920,216	5,488,818	2,431,398	5,224,201		
1997	14,481,944	8,383,896	4,935,875	3,448,021	6,098,048		
1998	14,484,512	8,031,441	5,720,154	2,311,287	6,453,071		
1999	15,234,568	8,516,952	5,417,444	3,099,508	6,717,616		
2000	16,579,778	9,246,899	6,218,666	3,028,233	7,332,879		
2001	15,661,962	8,347,254	5,171,182	3,176,072	7,314,708		
2002	16,181,025	8,236,180	5,232,276	3,003,904	7,944,845		
2003	15,715,877	7,893,894	4,128,996	3,764,898	7,821,983		
2004	15,713,668	7,367,246	4,860,062	2,507,184	8,346,422		
2005	15,932,920	7,685,212	5,393,449	2,291,763	8,247,708		
2006	15,107,689	7,582,640	4,899,946	2,682,694	7,525,049		
2007	15,371,542	7,872,222	4,711,788	3,160,434	7,499,320		
2008	13,841,092	7,038,652	3,878,338	3,160,314	6,802,440		
2009	9,353,215	5,513,420	2,917,813	2,595,607	3,839,795		
2010	11,123,563	6,005,596	3,609,055	2,396,541	5,117,967		

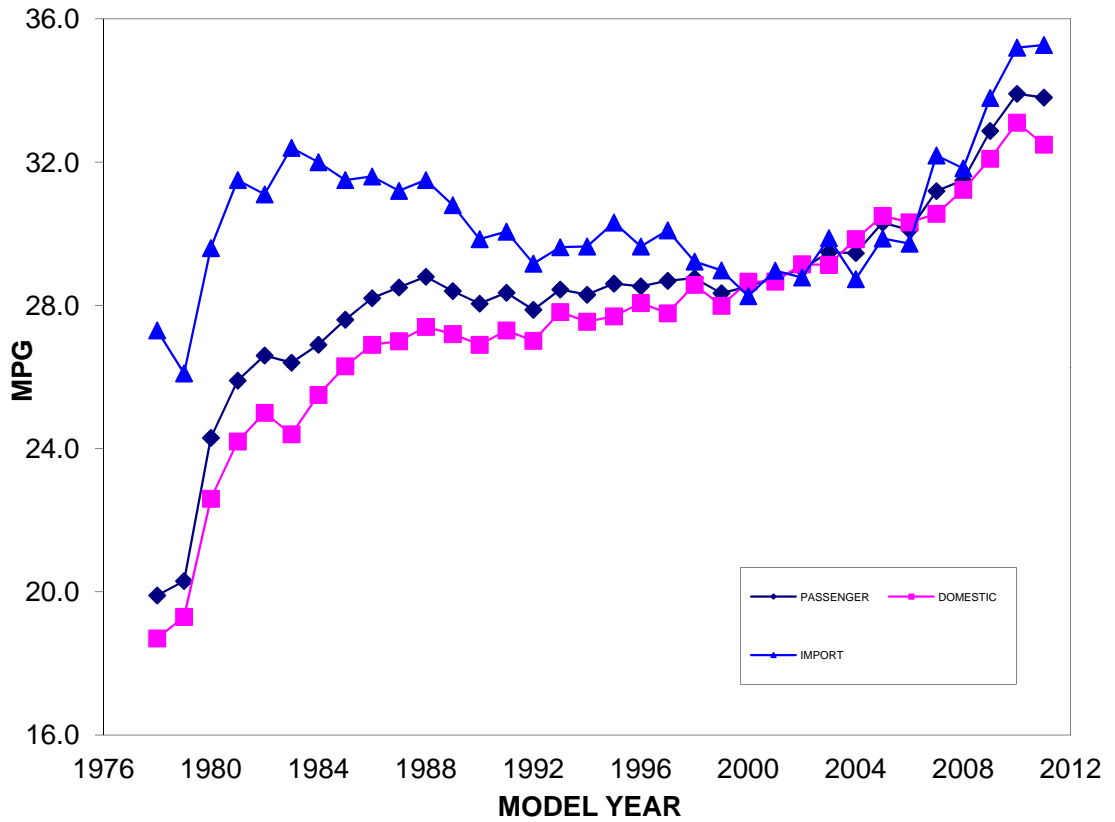
After MY 1995, the Light Truck Fleet is no longer broken down into "Captive Import" and "Other" categories.

After MY 2008, final EPA data is not fully available

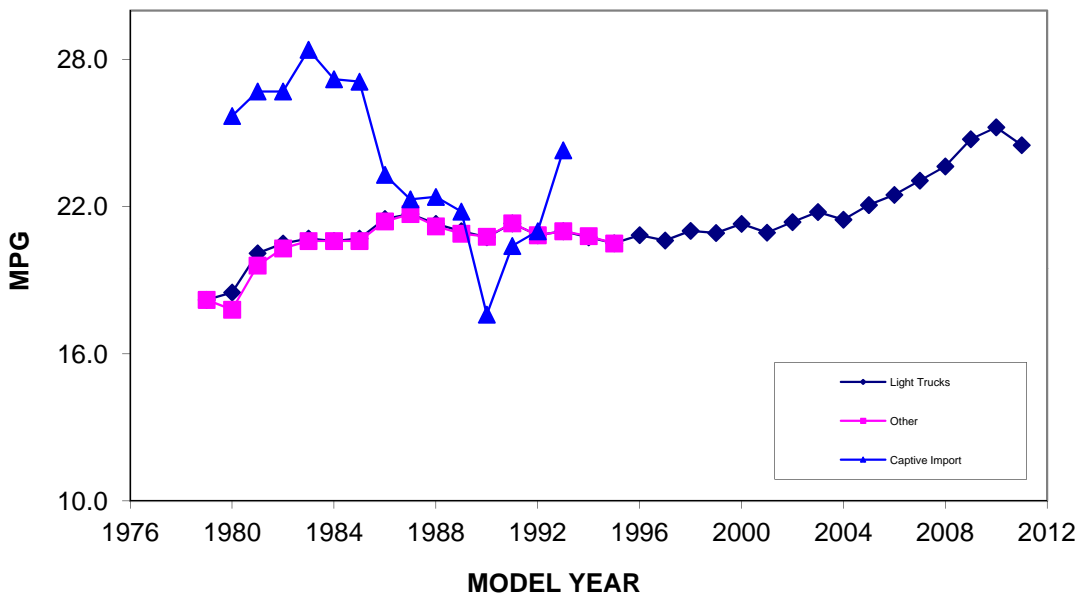
FLEET CAFE



PASSENGER CAR CAFE



LIGHT TRUCK CAFE



The light truck fleet is not broken down by "Captive Import" and "Other" categories after MY 95

MODEL YEAR 2011

<u>MANUFACTURER</u>	<u>YEAR</u>	<u>FLEET</u>	<u>STD</u>	<u>CAFE</u>	<u>ADJ</u>	<u>SOURCE</u>
BMW	2011	IP	29.5	29.7	A	2
BMW	2011	LT	25.4	25.5		2
CHRYSLER	2011	DP	28.6	29.9	A	2
CHRYSLER	2011	LT	24.7	24.3		2
DAIMLER	2011	IP	29.8	27.0		2
DAIMLER	2011	LT	25.3	21.5		2
FERRARI	2011	IP	30.3	17.6		2
FORD	2011	DP	29.7	32.4	A	2
FORD	2011	LT	23.5	24.2		2
GM	2011	DP	29.9	31.7	A	2
GM	2011	IP	30.8	32.9	A	2
GM	2011	LT	22.7	23.1		2
HONDA	2011	DP	30.5	34.9	A	2
HONDA	2011	IP	31.1	42.8	A	2
HONDA	2011	LT	25.4	26.2		2
HYUNDAI	2011	IP	30.1	35.7		2
HYUNDAI	2011	LT	26.4	28.6		2
JAGUAR LAND ROVER	2011	IP	27.2	23.6	A	2
JAGUAR LAND ROVER	2011	LT	26.0	18.5		2
KIA	2011	IP	30.6	34.6		2
KIA	2011	LT	26.0	28.8		2
LOTUS	2011	IP	31.1	27.4	A	2
MASERATI	2011	IP	28.6	18.4		2
MAZDA	2011	DP	31.1	31.7	A	2
MAZDA	2011	IP	30.7	33.4	A	2
MAZDA	2011	LT	25.7	24.9		2
MITSUBISHI	2011	IP	30.9	33.2	A	2
MITSUBISHI	2011	LT	26.6	29.9		2
NISSAN	2011	DP	30.6	34.6	A	2
NISSAN	2011	IP	30.7	33.4	A	2
NISSAN	2011	LT	25.1	24.8		2
PORSCHE	2011	IP	28.8	26.6	A	2
PORSCHE	2011	LT	25.3	24.0		2
SAAB	2011	IP	31.0	29.3		2
SPYKER	2011	IP	31.2	17.0		2
SUBARU	2011	IP	30.8	30.6	A	2
SUBARU	2011	LT	26.6	30.5		2
SUZUKI	2011	IP	31.1	34.1	A	2
SUZUKI	2011	LT	26.0	25.7		2
TESLA	2011	DP	31.2	346.8		2
THINK	2011	DP	31.2	130.6		2
TOYOTA	2011	DP	30.3	32.6		2
TOYOTA	2011	IP	30.9	42.6		2
TOYOTA	2011	LT	24.7	25.5		2
VOLVO	2011	IP	30.6	28.8		2
VOLVO	2011	LT	26.0	24.2		2
VPG	2011	LT	23.0	28.1		2
WHEEGO	2011	DP	31.2	106.6		2
VW	2011	IP	27.5	33.4	A	2
VW	2011	LT	25.9	27.2		2

* - 2011 STD = Required fleet standard based upon manufacturer's fleet characteristics

MODEL YEAR 2010

<u>MANUFACTURER</u>		<u>YEAR</u>	<u>FLEET</u>	<u>STD</u>	<u>CAFE</u>	<u>ADJ</u>	<u>VOLUME</u>	<u>SOURCE</u>
ASTON MARTIN	(1)	2010	IP	19.2	19.2		601	3
BMW		2010	IP	27.5	28.8		143,637	3
BMW		2010	LT	23.5	23.6		26,788	3
CHRYSLER		2010	DP	27.5	28.3		359,533	3
CHRYSLER		2010	LT	23.5	24.3		800,239	3
DAIMLER		2010	LT	23.5	21.4		72,393	3
DAIMLER		2010	IP	27.5	26.1		153,745	3
FIAT	(2)	2010	IP	27.5	18.4		3,163	3
FORD		2010	DP	27.5	32.6		713,248	3
FORD	(3)	2010	LT	23.4	24.1		1,083,474	3
GM		2010	DP	27.5	30.8		755,666	3
GM	(3)	2010	LT	23.0	25.5		933,798	3
GM		2010	IP	27.5	34.7		37,426	3
HONDA		2010	DP	27.5	34.8		570,695	3
HONDA		2010	IP	27.5	40.9		171,581	3
HONDA		2010	LT	23.5	26.8		493,070	3
HYUNDAI		2010	IP	27.5	36.3		313,984	3
HYUNDAI		2010	LT	23.5	30.0		86,717	3
JAGUAR LAND ROVER		2010	IP	27.5	23.7		10,472	3
JAGUAR LAND ROVER		2010	LT	23.5	18.7		29,724	3
KIA		2010	IP	27.5	36.6		219,680	3
KIA		2010	LT	23.5	25.7		28,198	3
LOTUS		2010	IP	27.5	26.9		354	3
MAZDA		2010	IP	27.5	33.8		212,495	3
MAZDA		2010	LT	23.5	26.7		98,444	3
MINI		2010	LT	23.5	27.3		20,610	3
MITSUBISHI		2010	IP	27.5	32.0		42,798	3
NISSAN		2010	IP	27.5	32.5		172,950	3
NISSAN		2010	DP	27.5	34.7		377,820	3
NISSAN		2010	LT	23.5	24.9		303,366	3
PORSCHE		2010	IP	27.5	25.7		11,937	3
PORSCHE		2010	LT	23.5	20.5		3,978	3
SPYKER	(1)	2010	IP	20.7	20.7		5	3
SUBARU		2010	DP	27.5	32.3		34,726	3
SUBARU		2010	IP	27.5	28.9		38,000	3
SUBARU		2010	LT	23.5	29.6		185,526	3
SUZUKI		2010	IP	27.5	34.6		20,212	3
SUZUKI		2010	LT	23.5	26.3		8,728	3
TESLA	(4)	2010	DP	27.5	346.8		278	3
TOYOTA		2010	DP	27.5	37.0		797,089	3
TOYOTA		2010	IP	27.5	44.6		545,634	3
TOYOTA		2010	LT	23.5	26.1		862,467	3
VOLVO		2010	IP	27.5	27.9		23,529	3
VOLVO		2010	LT	23.5	23.1		34,413	3
VW		2010	IP	27.5	33.3		274,338	3
VW		2010	LT	23.5	25.2		46,034	3

(1) - Manufacturer's petition for an alternate standard is pending.

(2) - Fiat includes combined data for Ferrari and Maserati.

(3) - Manufacturer opted for the reformed light truck standard.

(4) - EPA did not test vehicles of manufacturers who produced only electric vehicles. CAFE and volume values shown are final values submitted to EPA.

MODEL YEAR 2009

<u>MANUFACTURER</u>		<u>YEAR</u>	<u>FLEET</u>	<u>STD</u>	<u>CAFE</u>	<u>ADJ</u>	<u>VOLUME</u>	<u>SOURCE</u>
ASTON MARTIN	(1)	2009	IP	18.6	18.6		1,323	3
BMW		2009	IP	27.5	29.0		186,819	3
BMW		2009	LT	23.1	22.7		33,767	3
CHRYSLER		2009	DP	27.5	28.1		219,880	3
CHRYSLER		2009	LT	23.1	23.9		595,770	3
DAIMLER		2009	LT	23.1	20.8		43,747	3
DAIMLER		2009	IP	27.5	27.1		133,454	3
FIAT	(2)	2009	IP	27.5	17.8		2,756	3
FORD		2009	DP	27.5	31.5		421,198	3
FORD		2009	LT	23.1	24.6		584,509	3
FORD		2009	IP	27.5	27.6		31,618	3
GM		2009	DP	27.5	31.3		865,064	3
GM	(3)	2009	LT	22.5	23.6		921,464	3
GM		2009	IP	27.5	30.3		96,408	3
HONDA		2009	DP	27.5	34.3		608,190	3
HONDA		2009	IP	27.5	39.0		143,229	3
HONDA		2009	LT	23.1	26.1		397,621	3
HYUNDAI		2009	IP	27.5	34.1		320,687	3
HYUNDAI		2009	LT	23.1	25.9		91,077	3
JAGUAR LAND ROVER		2009	IP	27.5	23.7		15,247	3
JAGUAR LAND ROVER		2009	LT	23.1	19.1		14,795	3
KIA		2009	IP	27.5	35.2		155,446	3
KIA		2009	LT	23.1	25.0		81,725	3
LOTUS		2009	IP	27.5	30.1		147	3
MAZDA		2009	IP	27.5	32.6		54,862	3
MAZDA		2009	DP	27.5	30.4		39,504	3
MAZDA		2009	LT	23.1	26.6		54,508	3
MINI		2009	LT	23.1	27.4		11,954	3
MITSUBISHI		2009	IP	27.5	30.4		81,131	3
NISSAN		2009	IP	27.5	33.3		216,231	3
NISSAN		2009	DP	27.5	33.9		341,113	3
NISSAN		2009	LT	23.1	25.7		282,978	3
PORSCHE		2009	IP	27.5	27.6		10,980	3
PORSCHE		2009	LT	23.1	20.1		9,013	3
SPYKER	(4)	2009	IP	19.6	19.6		18	3
SUBARU		2009	IP	27.5	29.2		68,829	3
SUBARU		2009	LT	23.1	28.5		131,987	3
SUZUKI		2009	IP	27.5	32.7		24,859	3
SUZUKI		2009	LT	23.1	25.6		10,146	3
TESLA	(5)	2009	DP	27.5	244.0		900	3
TOYOTA		2009	DP	27.5	32.5		421,964	3
TOYOTA		2009	IP	27.5	39.4		797,167	3
TOYOTA		2009	LT	23.1	26.2		536,843	3
VW		2009	IP	27.5	31.2		254,396	3
VW		2009	LT	23.1	24.5		37,891	3

- (1) - Aston Martin's petition for an alternate standard is pending.
- (2) - Fiat includes combined data for Alfa Romeo, Ferrari and Maserati
- (3) - Manufacturer opted for the reformed light truck standard.
- (4) - Spyker's petition for an alternate standard is pending.
- (5) - EPA did not test vehicles of manufacturers who produced only electric vehicles. CAFE and volume values shown are final values submitted to EPA.

MODEL YEAR 2008

<u>MANUFACTURER</u>		<u>YEAR</u>	<u>FLEET</u>	<u>STD</u>	<u>CAFE</u>	<u>ADJ</u>	<u>VOLUME</u>	<u>SOURCE</u>
ASTON MARTIN	(1)	2008	IP	19.0	19.0		1,370	3
BMW		2008	IP	27.5	27.4		291,796	3
BMW		2008	LT	22.5	22.9		61,324	3
CHRYSLER		2008	DP	27.5	29.3		522,670	3
CHRYSLER		2008	LT	22.5	23.6		1,132,886	3
CHRYSLER		2008	IP	27.5	26.5		1,648	3
DAIMLER	(2)	2008	LT	22.3	20.8		79,135	3
DAIMLER		2008	IP	27.5	26.9		208,195	3
FERRARI		2008	IP	27.5	16.4		1,450	3
FIAT (ALFA ROMEO)		2008	IP	27.5	17.8		84	3
FORD		2008	DP	27.5	30.1		699,957	3
FORD		2008	LT	22.5	23.6		1,266,265	3
FORD		2008	IP	27.5	31.1		202,811	3
GM		2008	DP	27.5	29.6		1,264,194	3
GM	(2)	2008	LT	22.0	23.2		1,744,266	3
GM		2008	IP	27.5	31.5		107,717	3
HONDA		2008	DP	27.5	36.0		428,859	3
HONDA		2008	IP	27.5	33.5		471,781	3
HONDA		2008	LT	22.5	25.5		612,281	3
HYUNDAI		2008	IP	27.5	34.2		270,293	3
HYUNDAI		2008	LT	22.5	25.6		112,517	3
JAGUAR LAND ROVER		2008	LT	22.5	19.3		55,584	3
JAGUAR LAND ROVER		2008	IP	27.5	24.8		9,596	3
KIA		2008	IP	27.5	33.6		169,304	3
KIA		2008	LT	22.5	24.2		120,365	3
LOTUS		2008	IP	27.5	29.9		252	3
MASERATI		2008	IP	27.5	18.6		2,661	3
MINI		2008	LT	22.5	24.7		24,028	3
MINI		2008	IP	27.5	30.0		76,700	3
NISSAN		2008	IP	27.5	29.2		213,713	3
NISSAN		2008	DP	27.5	33.9		454,610	3
NISSAN		2008	LT	22.5	23.1		355,092	3
PORSCHE		2008	IP	27.5	26.4		18,909	3
PORSCHE		2008	LT	22.5	20.0		18,797	3
SPYKER	(1)	2008	IP	19.6	19.6		6	3
SUBARU		2008	DP	27.5	29.0		26,288	3
SUBARU		2008	IP	27.5	28.9		89,746	3
SUBARU		2008	LT	22.5	27.3		82,546	3
SUZUKI		2008	IP	27.5	31.6		68,720	3
SUZUKI		2008	LT	22.5	23.7		42,551	3
TESLA	(3)	2008	DP	27.5	244.0		143	3
TOYOTA		2008	DP	27.5	34.0		481,617	3
TOYOTA		2008	IP	27.5	38.3		662,079	3
TOYOTA		2008	LT	22.5	23.9		1,067,804	3
VW		2008	IP	27.5	29.1		291,483	3
VW	(2)	2008	LT	22.4	20.2		26,999	3

(1) - Aston Martin and Spyker's petitions for an alternate standard are pending.

(2) - Manufacturer opted for the reformed light truck standard.

(3) - EPA did not test vehicles of manufacturers who produce only electric vehicles. CAFE and volume values shown are final values submitted to EPA.

MODEL YEAR 2007

<u>MANUFACTURER</u>	<u>YEAR</u>	<u>FLEET</u>	<u>STD</u>	<u>CAFE</u>	<u>ADJ</u>	<u>VOLUME</u>	<u>SOURCE</u>
ASTON MARTIN	2007	IP	27.5	17.8		2,162	3
BMW	2007	IP	27.5	27.7		269,176	3
BMW	2007	LT	22.2	23.4		60,885	3
DAIMLERCHRYSLER	2007	DP	27.5	28.5		505,191	3
DAIMLERCHRYSLER	2007	LT	22.2	22.9		1,397,176	3
DAIMLERCHRYSLER	2007	IP	27.5	24.7		190,288	3
FERRARI	2007	IP	27.5	16.2		1,812	3
FORD	2007	DP	27.5	29.0		938,551	3
FORD	2007	LT	22.2	22.3		1,213,357	3
FORD	2007	IP	27.5	30.0		232,561	3
GM	2007	DP	27.5	30.0		1,434,668	3
GM	2007	LT	22.2	22.4		2,166,659	3
GM	2007	IP	27.5	32.3		93,589	3
HONDA	2007	DP	27.5	33.5		766,984	3
HONDA	2007	IP	27.5	39.3		137,455	3
HONDA	2007	LT	22.2	25.1		724,674	3
HYUNDAI	2007	IP	27.5	32.4		284,055	3
HYUNDAI	2007	LT	22.2	25.5		170,574	3
KIA	2007	IP	27.5	33.4		166,587	3
KIA	2007	LT	22.2	24.2		138,183	3
LOTUS	2007	IP	27.5	30.1		732	3
MASERATI	2007	IP	27.5	17.4		2,176	3
MINI	2007	LT	22.2	24.7		44,678	3
MINI	2007	IP	27.5	28.7		71,796	3
NISSAN	2007	IP	27.5	29.6		191,336	3
NISSAN	2007	DP	27.5	33.4		354,989	3
NISSAN	2007	LT	22.2	22.9		366,606	3
PORSCHE	2007	IP	27.5	26.5		22,500	3
SPYKER	2007	IP	18.9	19.6		7	3
SUBARU	2007	DP	27.5	29.5		14,963	3
SUBARU	2007	IP	27.5	28.5		83,183	3
SUBARU	2007	LT	22.2	27.1		54,285	3
SUZUKI	2007	IP	27.5	30.3		63,173	3
SUZUKI	2007	LT	22.2	23.8		48,074	3
TOYOTA	2007	DP	27.5	31.3		696,442	3
TOYOTA	2007	IP	27.5	38.3		1,060,899	3
TOYOTA	2007	LT	22.2	23.7		1,083,811	3
VW	2007	IP	27.5	28.8		286,947	3
VW	2007	LT	22.2	19.5		30,358	3

MODEL YEAR 2006

<u>MANUFACTURER</u>	<u>YEAR</u>	<u>FLEET</u>	<u>STD</u>	<u>CAFE</u>	<u>ADJ</u>	<u>VOLUME</u>	<u>SOURCE</u>
BMW	2006	IP	27.5	27.2		306,425	3
BMW	2006	LT	21.6	21.2		60,643	3
DAIMLERCHRYSLER	2006	DP	27.5	26.0		512,093	3
DAIMLERCHRYSLER	2006	LT	21.6	21.7		1,572,723	3
DAIMLERCHRYSLER	2006	IP	27.5	24.7		196,480	3
FERRARI	2006	IP	27.5	16.5		1,392	3
FORD	2006	DP	27.5	28.2		918,794	3
FORD	2006	LT	21.6	21.1		1,416,745	3
FORD	2006	IP	27.5	29.8		229,742	3
GM	2006	DP	27.5	29.9		1,512,127	3
GM	2006	LT	21.6	22.8		1,845,770	3
GM	2006	IP	27.5	29.0		101,193	3
HONDA	2006	DP	27.5	33.8		698,092	3
HONDA	2006	IP	27.5	34.5		118,604	3
HONDA	2006	LT	21.6	24.7		662,394	3
HYUNDAI	2006	IP	27.5	30.1		336,045	3
HYUNDAI	2006	LT	21.6	25.2		88,201	3
KIA	2006	IP	27.5	32.8		167,247	3
KIA	2006	LT	21.6	22.8		150,411	3
LOTUS	2006	IP	27.5	30.8		1,424	3
MASERATI	2006	IP	27.5	17.0		2,437	3
MITSUBISHI	2006	LT	21.6	23.9		33,176	3
MITSUBISHI	2006	IP	27.5	29.5		101,433	3
NISSAN	2006	IP	27.5	24.3		130,849	3
NISSAN	2006	DP	27.5	31.1		494,029	3
NISSAN	2006	LT	21.6	21.9		451,578	3
PORSCHE	2006	IP	27.5	26.3		24,081	3
PORSCHE	2006	LT	21.6	18.5		17,657	3
SALEEN	2006	DP	27.5	13.2		16	3
SPYKER	2006	IP	18.9	19.3		13	3
SUBARU	2006	DP	27.5	29.1		21,696	3
SUBARU	2006	IP	27.5	28.3		96,392	3
SUBARU	2006	LT	21.6	26.2		95,331	3
SUZUKI	2006	IP	27.5	30.1		69,867	3
SUZUKI	2006	LT	21.6	24.0		46,728	3
TOYOTA	2006	DP	27.5	34.6		743,099	3
TOYOTA	2006	IP	27.5	35.0		463,484	3
TOYOTA	2006	LT	21.6	23.7		1,071,479	3
VW	2006	IP	27.5	30.1		335,586	3
VW	2006	LT	21.6	20.1		12,213	3

MODEL YEAR 2005

<u>MANUFACTURER</u>	<u>YEAR</u>	<u>FLEET</u>	<u>STD</u>	<u>CAFE</u>	<u>ADJ</u>	<u>VOLUME</u>	<u>SOURCE</u>
BMW	2005	IP	27.5	27.2		169,424	3
BMW	2005	LT	21.0	21.3		65,416	3
DAIMLERCHRYSLER	2005	DP	27.5	28.8		528,854	3
DAIMLERCHRYSLER	2005	LT	21.0	21.4		1,888,888	3
DAIMLERCHRYSLER	2005	IP	27.5	25.9		191,994	3
FERRARI/MASERATI	2005	IP	27.5	15.4		3,646	3
FORD	2005	DP	27.5	28.6		992,105	3
FORD	2005	LT	21.0	21.6		1,667,221	3
FORD	2005	IP	27.5	28.4		221,605	3
GM	2005	DP	27.5	29.3		1,671,634	3
GM	2005	LT	21.0	21.8		2,168,570	3
GM	2005	IP	27.5	30.5		108,598	3
HONDA	2005	DP	27.5	33.2		697,090	3
HONDA	2005	IP	27.5	33.1		132,522	3
HONDA	2005	LT	21.0	24.9		561,059	3
HYUNDAI	2005	IP	27.5	30.5		298,596	3
HYUNDAI	2005	LT	21.0	24.8		135,325	3
KIA	2005	IP	27.5	29.5		133,575	3
KIA	2005	LT	21.0	21.4		158,150	3
LOTUS	2005	IP	27.5	29.4		3,320	3
MINI	2005	DP	27.5	27.6		8,471	3
MINI	2005	LT	21.0	23.6		39,683	3
MINI	2005	IP	27.5	30.2		60,034	3
NISSAN	2005	IP	27.5	24.8		94,085	3
NISSAN	2005	DP	27.5	30.7		559,064	3
NISSAN	2005	LT	21.0	21.7		466,159	3
PORSCHE	2005	IP	27.5	24.7		14,533	3
PORSCHE	2005	LT	21.0	18.5		14,380	3
SALEEN	2005	DP	27.5	13.2		18	3
SPYKER	2005	IP	27.5	19.3		7	3
SUBARU	2005	IP	27.5	27.9		124,276	3
SUBARU	2005	LT	21.0	27.4		88,224	3
SUZUKI	2005	IP	27.5	29.7		60,830	3
SUZUKI	2005	LT	21.0	22.9		24,824	3
TOYOTA	2005	DP	27.5	34.4		936,213	3
TOYOTA	2005	IP	27.5	36.6		426,729	3
TOYOTA	2005	LT	21.0	23.1		946,846	3
VW	2005	IP	27.5	29.1		247,989	3
VW	2005	LT	21.0	20.1		22,963	3

MODEL YEAR 2004

<u>MANUFACTURER</u>	<u>YEAR</u>	<u>FLEET</u>	<u>STD</u>	<u>CAFE</u>	<u>ADJ</u>	<u>VOLUME</u>	<u>SOURCE</u>
BMW	2004	IP	27.5	26.4		226,634	3
BMW	2004	LT	20.7	21.5		68,206	3
DAIMLERCHRYSLER	2004	DP	27.5	29.6		543,939	3
DAIMLERCHRYSLER	2004	LT	20.7	20.5		1,595,195	3
DAIMLERCHRYSLER	2004	IP	27.5	26.9		258,708	3
FERRARI/MASERATI	2004	IP	27.5	15.0		2,198	3
FORD	2004	DP	27.5	26.7		788,421	3
FORD	2004	LT	20.7	21.0		1,858,510	3
FORD	2004	IP	27.5	27.7		280,651	3
GM	2004	DP	27.5	29.3		1,845,034	3
GM	2004	LT	20.7	21.4		2,355,617	3
GM	2004	IP	27.5	30.3		120,420	3
HONDA	2004	DP	27.5	33.1		718,232	3
HONDA	2004	IP	27.5	32.7		106,188	3
HONDA	2004	LT	20.7	24.6		540,471	3
HYUNDAI	2004	IP	27.5	29.6		293,663	3
HYUNDAI	2004	LT	20.7	24.2		130,385	3
ISUZU	2004	LT	20.7	23.1		20,210	3
KIA	2004	IP	27.5	29.1		167,681	3
KIA	2004	LT	20.7	20.5		100,544	3
LOTUS	2004	IP	27.5	20.8		39	3
NISSAN	2004	IP	27.5	28.9		265,776	3
NISSAN	2004	DP	27.5	27.9		207,494	3
NISSAN	2004	LT	20.7	21.2		493,016	3
PORSCHE	2004	IP	27.5	23.3		13,963	3
PORSCHE	2004	LT	20.7	18.3		24,027	3
QUANTUM	2004	DP	27.5	32.3		391	3
SALEEN	2004	DP	27.5	13.4		8	3
SUBARU	2004	IP	27.5	27.2		162,699	3
SUBARU	2004	LT	20.7	25.4		2,208	3
SUZUKI	2004	IP	27.5	29.5		57,969	3
SUZUKI	2004	LT	20.7	22.8		30,950	3
TOYOTA	2004	DP	27.5	33.2		756,543	3
TOYOTA	2004	IP	27.5	32.4		236,648	3
TOYOTA	2004	LT	20.7	22.7		1,081,706	3
VW	2004	IP	27.5	29.0		313,947	3
VW	2004	LT	20.7	19.2		45,377	3

MODEL YEAR 2003

<u>MANUFACTURER</u>	<u>YEAR</u>	<u>FLEET</u>	<u>STD</u>	<u>CAFE</u>	<u>ADJ</u>	<u>VOLUME</u>	<u>SOURCE</u>
BMW	2003	IP	27.5	26.8		230,176	3
BMW	2003	LT	20.7	20.0		43,552	3
DAEWOO	2003	IP	27.5	29.1		1,729	3
DAIMLERCHRYSLER	2003	DP	27.5	29.7		498,296	3
DAIMLERCHRYSLER	2003	LT	20.7	22.2		1,540,670	3
DAIMLERCHRYSLER	2003	IP	27.5	26.3		294,104	3
FERRARI/MASERATI	2003	IP	27.5	14.5		1,594	3
FORD	2003	DP	27.5	27.9		1,136,369	3
FORD	2003	LT	20.7	21.3		1,956,347	3
FORD	2003	IP	27.5	28.2		207,599	3
GM	2003	DP	27.5	28.9		1,872,984	3
GM	2003	LT	20.7	21.3		2,448,092	3
GM	2003	IP	27.5	28.3		48,812	3
HONDA	2003	DP	27.5	34.4		378,129	3
HONDA	2003	IP	27.5	31.9		498,229	3
HONDA	2003	LT	20.7	24.7		560,024	3
HYUNDAI	2003	IP	27.5	30.4		308,696	3
HYUNDAI	2003	LT	20.7	24.4		98,515	3
ISUZU	2003	LT	20.7	22.3		17,473	3
KIA	2003	IP	27.5	30.4		138,709	3
KIA	2003	LT	20.7	19.7		94,352	3
LOTUS	2003	IP	27.5	20.8		96	3
NISSAN	2003	IP	27.5	27.4		281,994	3
NISSAN	2003	DP	27.5	28.9		225,388	3
NISSAN	2003	LT	20.7	21.9		280,327	3
PORSCHE	2003	IP	27.5	24.1		17,907	3
PORSCHE	2003	LT	20.7	18.0		1,277	3
QUANTUM	2003	DP	27.5	32.4		313	3
SALEEN	2003	DP	27.5	15.0		13	3
SUBARU	2003	IP	27.5	27.6		173,882	3
SUBARU	2003	LT	20.7	26.3		14,966	3
SUZUKI	2003	IP	27.5	33.0		33,931	3
SUZUKI	2003	LT	20.7	21.8		29,429	3
TOYOTA	2003	DP	27.5	28.1		17,504	3
TOYOTA	2003	IP	27.5	32.4		1,107,167	3
TOYOTA	2003	LT	20.7	21.9		727,041	3
VW	2003	IP	27.5	29.8		420,273	3
VW	2003	LT	20.7	21.3		9,918	3

MODEL YEAR 2002

<u>MANUFACTURER</u>	<u>YEAR</u>	<u>FLEET</u>	<u>STD</u>	<u>CAFE</u>	<u>ADJ</u>	<u>VOLUME</u>	<u>SOURCE</u>
BMW	2002	IP	27.5	26.2		196,729	3
BMW	2002	LT	20.7	20.1		40,993	3
DAEWOO	2002	IP	27.5	28.2		17,396	3
DAIMLERCHRYSLER	2002	DP	27.5	27.7		671,372	3
DAIMLERCHRYSLER	2002	LT	20.7	21.5		1,771,152	3
DAIMLERCHRYSLER	2002	IP	27.5	26.6		266,903	3
FIAT	2002	IP	27.5	15.1		1,971	3
FORD	2002	DP	27.5	27.9		1,190,157	3
FORD	2002	LT	20.7	20.7		2,060,578	3
FORD	2002	IP	27.5	28.1		279,827	3
GM	2002	DP	27.5	28.8		2,106,105	3
GM	2002	LT	20.7	21.2		2,381,767	3
GM	2002	IP	27.5	27.8		33,394	3
HONDA	2002	DP	27.5	32.4		815,785	3
HONDA	2002	IP	27.5	29.8		71,567	3
HONDA	2002	LT	20.7	25.4		335,916	3
HYUNDAI	2002	IP	27.5	31.2		310,010	3
HYUNDAI	2002	LT	20.7	24.5		82,824	3
ISUZU	2002	LT	20.7	21.0		78,913	3
KIA	2002	IP	27.5	29.7		156,722	3
KIA	2002	LT	20.7	21.4		96,614	3
LOTUS	2002	IP	27.5	20.8		100	3
NISSAN	2002	IP	27.5	29.5		251,455	3
NISSAN	2002	DP	27.5	28.9		192,701	3
NISSAN	2002	LT	20.7	20.7		287,302	3
PORSCHE	2002	IP	27.5	23.9		22,009	3
QUANTUM	2002	DP	27.5	30.2		1,483	3
SUBARU	2002	IP	27.5	27.6		203,295	3
SUZUKI	2002	IP	27.5	33.8		23,336	3
SUZUKI	2002	LT	20.7	21.9		50,261	3
TOYOTA	2002	DP	27.5	33.6		254,673	3
TOYOTA	2002	IP	27.5	29.3		757,715	3
TOYOTA	2002	LT	20.7	22.1		747,968	3
VW	2002	IP	27.5	29.5		411,475	3
VW	2002	LT	20.7	20.6		10,557	3

MODEL YEAR 2001

<u>MANUFACTURER</u>	<u>YEAR</u>	<u>FLEET</u>	<u>STD</u>	<u>CAFE</u>	<u>ADJ</u>	<u>VOLUME</u>	<u>SOURCE</u>
BMW	2001	IP	27.5	25.0		203,534	3
BMW	2001	LT	20.7	19.2		54,534	3
DAEWOO	2001	IP	27.5	28.6		55,188	3
DAIMLERCHRYSLER	2001	DP	27.5	27.9		739,681	3
DAIMLERCHRYSLER	2001	LT	20.7	20.8		1,812,945	3
DAIMLERCHRYSLER	2001	IP	27.5	26.5		215,072	3
FIAT	2001	IP	27.5	13.7		1,077	3
FORD	2001	DP	27.5	27.7		1,313,169	3
FORD	2001	LT	20.7	20.4		1,988,290	3
FORD	2001	IP	27.5	27.9		236,797	3
GM	2001	DP	27.5	28.3		2,184,214	3
GM	2001	LT	20.7	20.7		1,902,731	3
GM	2001	IP	27.5	28.4		71,503	3
HONDA	2001	DP	27.5	32.7		794,448	3
HONDA	2001	IP	27.5	29.8		42,271	3
HONDA	2001	LT	20.7	25.0		281,606	3
HYUNDAI	2001	IP	27.5	31.3		273,505	3
HYUNDAI	2001	LT	20.7	25.0		51,088	3
ISUZU	2001	LT	20.7	21.1		100,127	3
KIA	2001	IP	27.5	30.5		156,610	3
KIA	2001	LT	20.7	23.0		57,927	3
LOTUS	2001	IP	27.5	20.8		97	3
NISSAN	2001	IP	27.5	28.7		257,247	3
NISSAN	2001	DP	27.5	27.9		137,253	3
NISSAN	2001	LT	20.7	20.7		356,816	3
PORSCHE	2001	IP	27.5	23.7		23,910	3
QUANTUM	2001	DP	27.5	30.2		2,417	3
SUBARU	2001	IP	27.5	28.0		170,843	3
SUZUKI	2001	IP	27.5	35.1		23,088	3
SUZUKI	2001	LT	20.7	22.1		45,923	3
TOYOTA	2001	IP	27.5	30.6		986,390	3
TOYOTA	2001	LT	20.7	22.1		652,229	3
VW	2001	IP	27.5	28.5		458,940	3
VW	2001	LT	20.7	20.4		10,492	3