



® INC

P.O. BOX 31
GEORGE, IOWA 51237P.O. BOX 79
EMMETSBURG, IOWA 50536

April 10, 1990

01-22-N11B-3703

ORIGINAL

Administrator
National Highway Traffic Safety Administration
400 Seventy Street S.W.
Washington, D.C. 20590

ATTN: VIN Coordinator

Good Morning,

I am enclosing the following information necessary for your office to decipher the VIN scheme for a small trailer that we plan to manufacture in compliance with FMVSS.

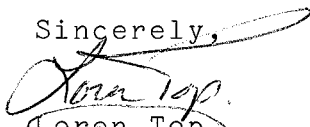
As you will note we have classified our trailer as a type (F) flatbed with a special body type (P) for manufacturing in 1990 at George, Iowa.

Please note the VIN number calculation for the first trailer we will manufacture.

Also you will find a copy of the (WMI) code assigned by S.A.E.

Should you have any questions please contact me by phone at 712-475-2804 or by fax at 712-475-3320.

Sincerely,


Loren Top
Sales Manager
DUR-A-LIFT INC.

LT/lj

Enclosures:

J.A.T
4-17-90B 7/30/90 RM
rdg

5 pgs

90 AUG 2 A10:12

RECEIVED
NHTSA DOCKET

CHECK DIGIT CALCULATIONS

CHARACTER
ACTUAL VIN

CONVERTED VALUES
from TABLE A (below)

MULTIPLIER (X)

PRODUCT
(Value x multiplier)

1	2	3	4	5	6	7	8	9	10	11	12	13	14	15	16	17
1	D	9	F	P	1	7	1	0	L	9	1	7	2	0	0	1
1	4	9	6	7	1	7	1		3	7	1	7	2	0	0	1
8	7	6	5	4	3	2	10	0	9	8	7	6	5	4	3	2
8	28	54	30	28	3	14	10		27	56	7	42	10	0	0	2

= 319

SUM
OF
PRODUCTS

$$\frac{319}{11} = 29 \text{ WHOLE NUMBER } . 00 \text{ DECIMAL}$$

ALPHABETIC TO NUMERIC CONVERSION VALUES

A-1	G-7	N-5	V-5
B-2	H-8	P-7	W-6
C-3	J-1	R-9	X-7
D-4	K-2	S-2	Y-8
E-5	L-3	T-3	Z-9
F-6	M-4	U-4	

TABLE A

NOTE: Numerical characters from actual VIN are used in check digit calculation. Alphabetical characters are converted to numerical, according to TABLE A values.

IF DECIMAL IS	CHECK DIGIT IS	IF DECIMAL IS	CHECK DIGIT IS
.09	= 1	.54	= 6
.18	= 2	.63	= 7
.27	= 3	.72	= 8
.36	= 4	.81	= 9
.45	= 5	.90	= X
		.00	= 0

TABLE B

EXAMPLE

ABC Trailers, Inc. builds a flat bed standard series trailer with a 16 foot bed length on two axles at a plant in Cleveland, Ohio. What is the VIN coding for this trailer?

Since ABC manufactures less than 500 units per year, SAE assigned ABC a six digit number as follows: 1A9/347. (1A9 goes in columns 1-3 and 347 goes in columns 12-14) ABC has elected to code body type in column 4, series in column 5, length in columns 6 and 7 and number of axles in column 8. (The characters utilized and their placement are determined by the manufacturer, but must include all required attributes for vehicle type). ABC's coding for vehicle attributes are: Type—F = flatbed, U = utility; Series/body type—S = standard, P = special; Length—actual overall bed length in feet (08, 12, 16, etc.) and number of axles—1 = single, 2 = tandem, etc. The letter F designates the 1985 model year and ABC uses the letter C for the location of their only plant, in Cleveland.

CHECK DIGIT

CHARACTER

ACTUAL VIN

CONVERTED VALUES
from TABLE A

MULTIPLIER (X)

PRODUCT

(Value x multiplier)

1	2	3	4	5	6	7	8	9	10	11	12	13	14	15	16	17
1	A	9	F	S	1	6	2	5	F	C	3	4	7	0	0	1
1	1	9	6	2	1	6	2	0	6	3	3	4	7	0	0	1
8	7	6	5	4	3	2	10	0	9	8	7	6	5	4	3	2
8	7	54	30	8	3	12	20	0	54	24	21	24	35	0	0	2

= 302

SUM
OF
PRODUCTS

$$\frac{302}{11} = 27 \text{ WHOLE NUMBER } . 45 \text{ DECIMAL}$$

Since the check digit calculation for ABC Trailers resulted in a decimal value of .45, Table B shows that the check digit is 5. The value 5, placed in position 9 of the actual VIN, completes the 17 digit VIN requirements.

400 COMMONWEALTH DRIVE, WARRENDALE, PA 15096-0001 U.S.A.
(412) 776-4841 FAX NO. (412) 776-5760

CABLE ADDRESS: SOCAUTOENG PA
TELEX NO. 866-355

March 28, 1990

Mr. Gordon Jurrens
Dur-A-Lift Inc.
P.O. Box 31
George, IA 51237

Dear Mr. Jurrens:

This letter confirms our telephone conversation of March 26, 1990 regarding the assignment of a World Manufacturer (Maker) Identifier (WMI) Code. As the agent of the NHTSA for the assignment of manufacturer identifiers pursuant to CFR 49 Part 565.5C Vehicle Identification Number (VIN), we hereby confirm the following code:

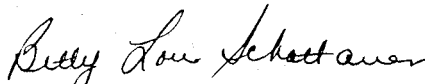
Dur-A-Lift Inc.
P.O. Box 31
George, IA 51237
United States

1 D 9

with the 3rd, 4th, and 5th
characters of the Vehicle
Indicator Section to be
1 7 2

Trailers

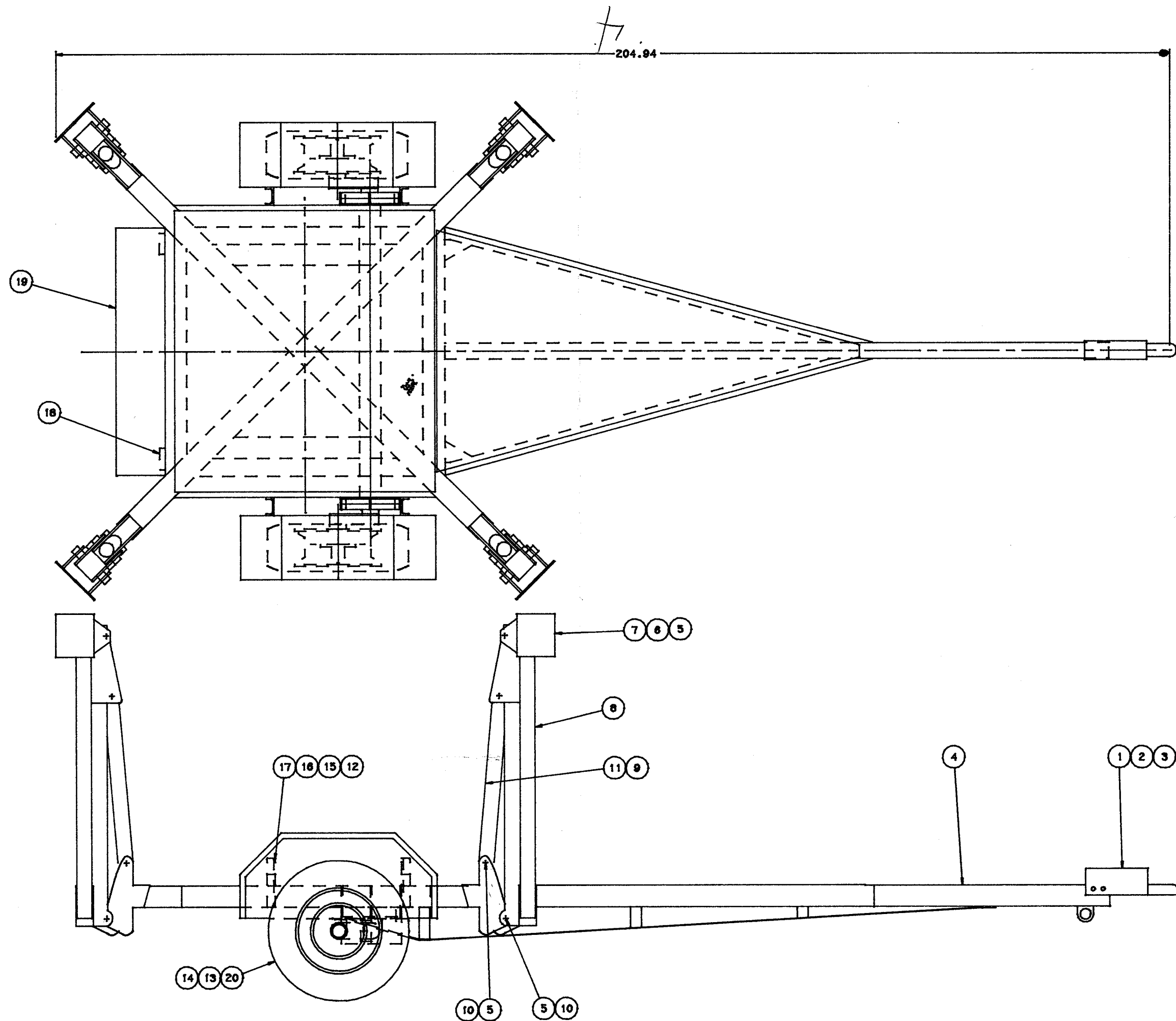
Sincerely,


Betty Lou Schattauer
WMI Coordinator

/bls

Enclosure

cc: A. Burgett
B. P. Hickey





P.O. BOX 31
 GEORGE, IOWA 51237
 Tele.: (712) 475-2804
 Fax: (712) 475-3320

Order Number 30,302

S O L D T O	Admin\$trator	S H I P T O
	National Highway Traffic Safety Adm.	
	400 Seventy Street, S.W.	
	Washington, D.C. 20590	
	ATTN: VIN Coordinator	

DATE		TERMS/F.O.B.		CUST. P.O. NO.		WHEN		SHIP VIA		SALESMAN	
4-10-90								UPS - Next day		Loren Top	
ORI	BACKORD.	SHIPPED	PART NUMBER	DESCRIPTION					UNIT PRICE	AMOUNT	
				Letter							
				Copy of SAE Assignment							
				Copy of Vin Calculation							
				Print from Mark onbTrailer						N/C	
				Business Card.							